

Super-Compact Ceiling Hanger

Model KSCH - Patent No. 7,028,432 B2



Application

Low-profile isolated ceiling construction using a resilient hanger assembly to support one or more layers of gypsum board is desired by architects wanting to minimize ceiling drop in an occupied space. The Model KSCH Super-Compact Ceiling Hanger helps the designer achieve the goal of resiliently decoupling the ceiling using less than three and one half (3-1/2") inches of space. Model KSCH is designed to allow use of a single piece of 1-1/2" x 1/2" cold-rolled channel to support the drywall furring channel to which the gypsum board is attached. Renovation and new-build design ceiling height concerns are addressed easily with Model KSCH.

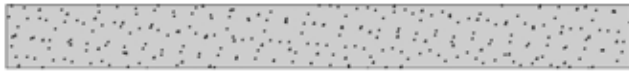
Benefits

- Low 3-1/2" airspace using 7/8" drywall furring channel at 1/2" nominal spring deflection.
- Maximum natural frequency of 5.5 Hz under lightest typical load conditions.
- Requires only one (1) piece of 1-1/2" x 1/2" cold-rolled channel.
- Extended mounting bracket allows easy attachment to non-isolated deck.
- Centering notches for flawless alignment.
- Minimal vertical/lateral movement during a seismic event.
- STC 72, IIC 51 with two (2) layers gypsum board suspended under a 6" concrete slab (75 psf) with 1-1/2" fiberglass batt in airspace - 1/2" deflection springs.

Standard Capacities

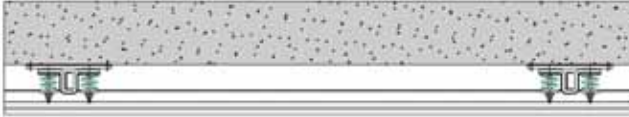
Model	Spring Color	Spring Rate (lb/in)
KSCH-30	Blue	30
KSCH-60	Gray	60
KSCH-100	Silver	100
KSCH-140	Green	140

STC/IIC Sound Test Data



STC-53 IIC-27

6" Concrete Slab



STC-59 IIC-47

6" Concrete Slab
KSCH Ceiling Hanger
 Cold Rolled Channel CRC
 Drywall Furring Channel
 2 Layers 5/8" Gypsum Board

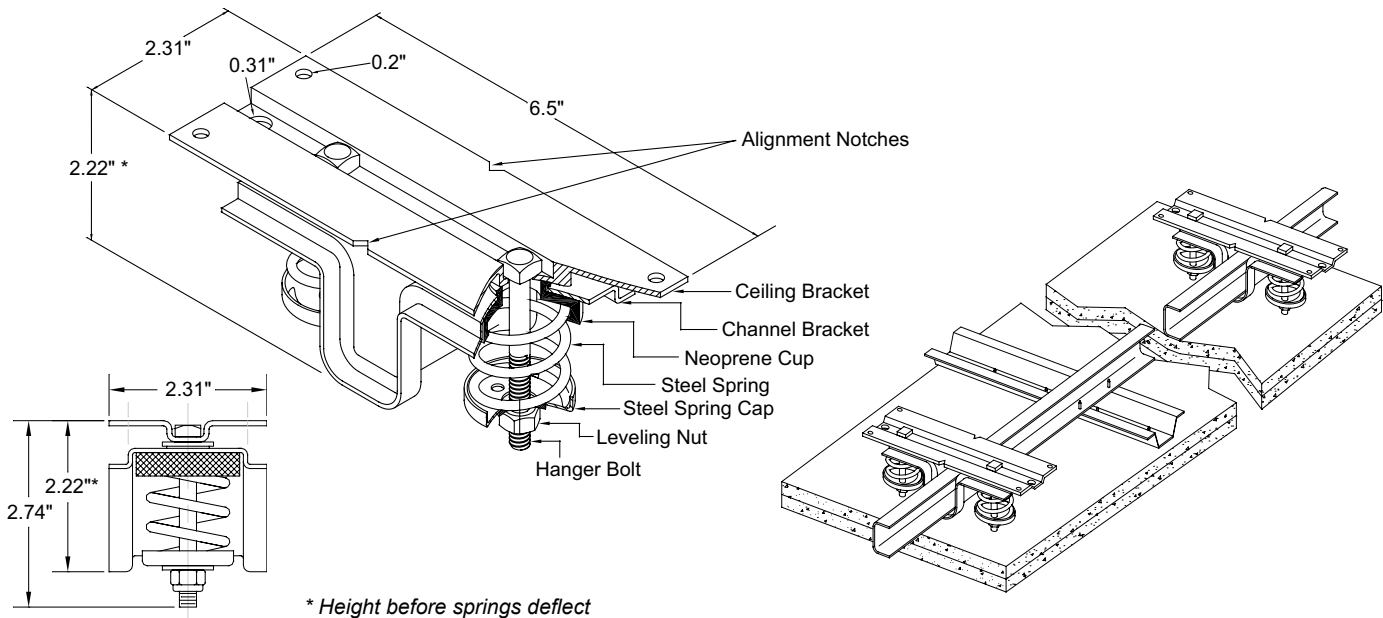


STC-72 IIC-51

6" Concrete Slab
KSCH Ceiling Hanger
 Rock Wool Batts
 Cold Rolled Channel (CRC)
 Drywall Furring Channel
 2 Layers 5/8" Gypsum Board

Visit www.kineticsnoise.com/arch/tests/ksch.aspx for complete Model KSCH STC/IIC Sound test data

Product and Assembly Details



Kinetics Noise Control, Inc.

United States
 6300 Irelan Place
 Dublin, Ohio, 43017
 Phone: 614-889-0480
 Fax: 614-614-889-0540

Canada
 3570 Nashua Drive
 Mississauga, Ontario, L4V1L2
 Phone: 905-670-4922
 Fax: 905-670-1698

Download Model KSCH installation guidelines, three-part specification, and more at www.kineticsnoise.com/arch/ksch.aspx. Call the factory at 800-959-1229 if needing additional information; ask for Architectural sales. Purchase Model KSCH and accessories through your local sales representative (www.kineticsnoise.com/relocation.asp).

www.kineticsnoise.com/arch/ksch.aspx
archsales@kineticsnoise.com

Kinetics Noise Control, Inc. is continually upgrading the quality of our products. We reserve the right to make changes to this and all products without notice.