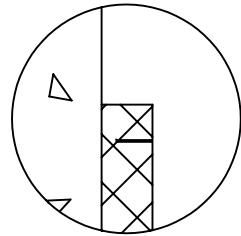


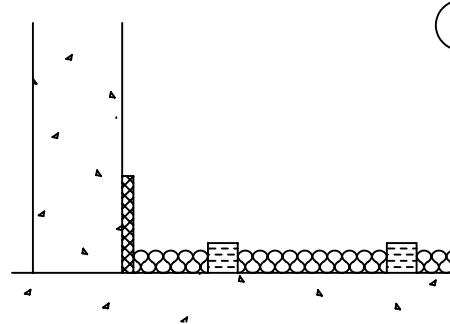
1

STRIKE FLOATING SLAB GRADE AND ADHERE PIB TO WALL.



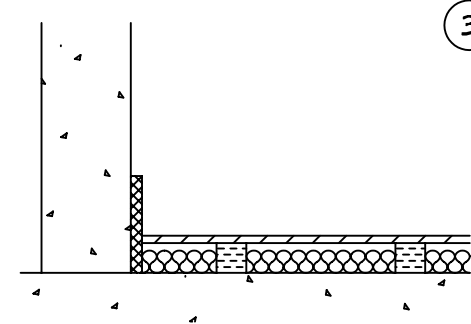
NOTE:

PIB TEAR STRIP MUST BE ON TOP WITH TEAR SLOT FACING TOWARDS FLOOR TO BE POURED.



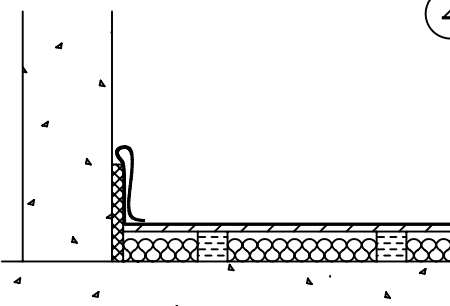
2

ROLL-OUT THE RIM CUTTING THE LOW DENSITY FIBER-GLASS TO THE REQUIRED LENGTH, ALSO CUTTING TO MATCH ROOM CONTOURS.



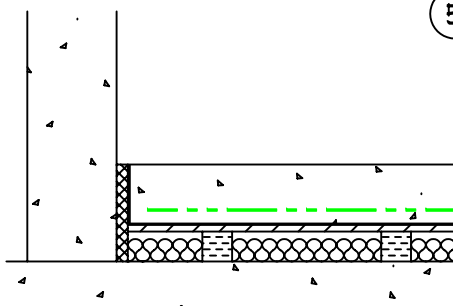
3

LAY PLYWOOD ON TOP OF RIM MATERIAL STAGGERING JOINTS 2'-0" (600), SECURE TOGETHER USING JUNCTION PLATES AS DETAILED.



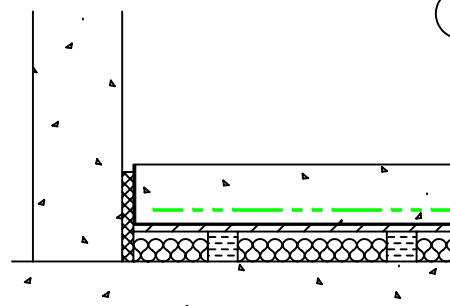
4

COVER FLOOR WITH TWO LAYERS OF POLY FILM, OVERLAPPING SEAMS A MIN. OF 6" (150). EXTEND POLY UP AND STAPLE TO WALL OR ROLL BACK ONTO PLYWOOD AND STAPLE. ENSURE ALL SEAMS ARE TAPED TO PREVENT CONCRETE FROM LEAKING THROUGH.



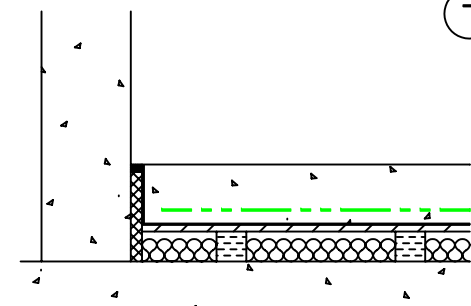
5

PLACE REINFORCEMENT AND POUR FLOATING SLAB PER PROJECT DESIGN AND SPECIFICATIONS.



6

AFTER CONCRETE HAS CURED, REMOVE PIB TEAR STRIP AND EXCESS POLY FILM AT SLAB PERIMETER.



7

CAULK SLAB PERIMETER USING SEALANT PER MANUFACTURER'S INSTRUCTIONS.