

SPRING DATA

SPRING ISOLATORS ARE COMPUTER SELECTED AND LOCATED TO PROVIDE A NOMINAL 1 INCH (25 mm) STATIC DEFLECTION

SPRING ISOLATORS HAVE A MINIMUM K_x/K_y OF 1.2

SPRING ISOLATORS HAVE A TYPICAL OVERLOAD CAPACITY OF 50%

SPRING ISOLATORS ARE SAFE AT SOLID LOADING

SPRING ISOLATORS ARE PAINTED.

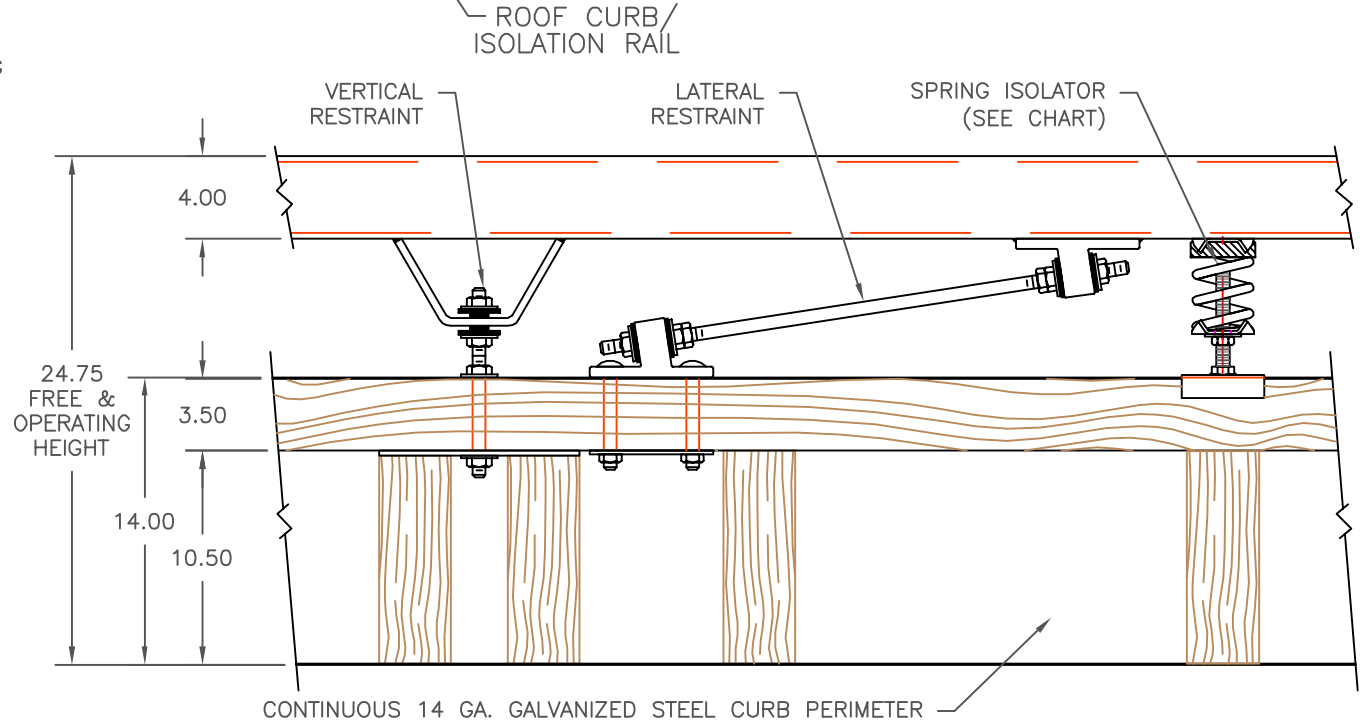
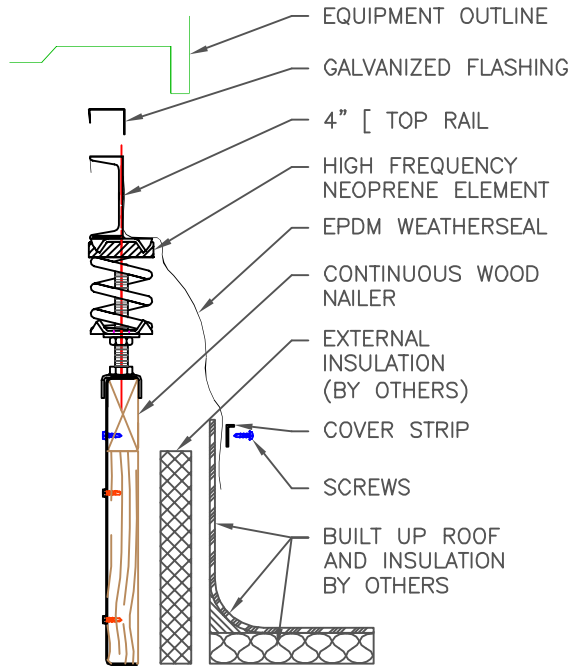
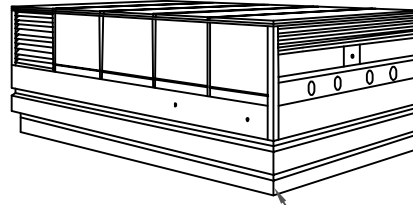
RESTRAINT AND ATTACHMENT DATA

RESTRAINT ELEMENTS DESIGNED FOR 3000 LB LATERAL AND VERTICAL SIMULTANEOUS LOADING

ATTACHMENT TO STRUCTURE: FOR EACH LATERAL OR VERTICAL RESTRAINT, (3) 3/8" BOLTS OR (6) 1/4" BOLTS OR EQUIVALENT ARE REQUIRED.

RATED LOAD LB/KG	RATED DEFL. IN/mm	SPRING FR. HT. IN/mm	SPRING O. D. IN/mm	COLOR CODE
250/113	1.79/45	4.2/107	3.0/76	BLUE
450/204	1.54/39	4.2/107	3.0/76	GREEN
625/284	1.44/37	4.2/107	3.0/76	BLACK
800/364	1.31/33	4.2/107	3.0/76	GRAY
1000/455	1.15/29	4.2/107	3.0/76	RED
1250/568	1.09/28	4.2/107	3.0/76	BROWN

ROOFTOP EQUIPMENT



TITLE

1" KINETICS CURB-1
DEFL. ISOLATION RAIL

LAST DATE
REVISED

08/24/09

REVISED BY

DCB

DRAWING NO.

SS-20090001

SS