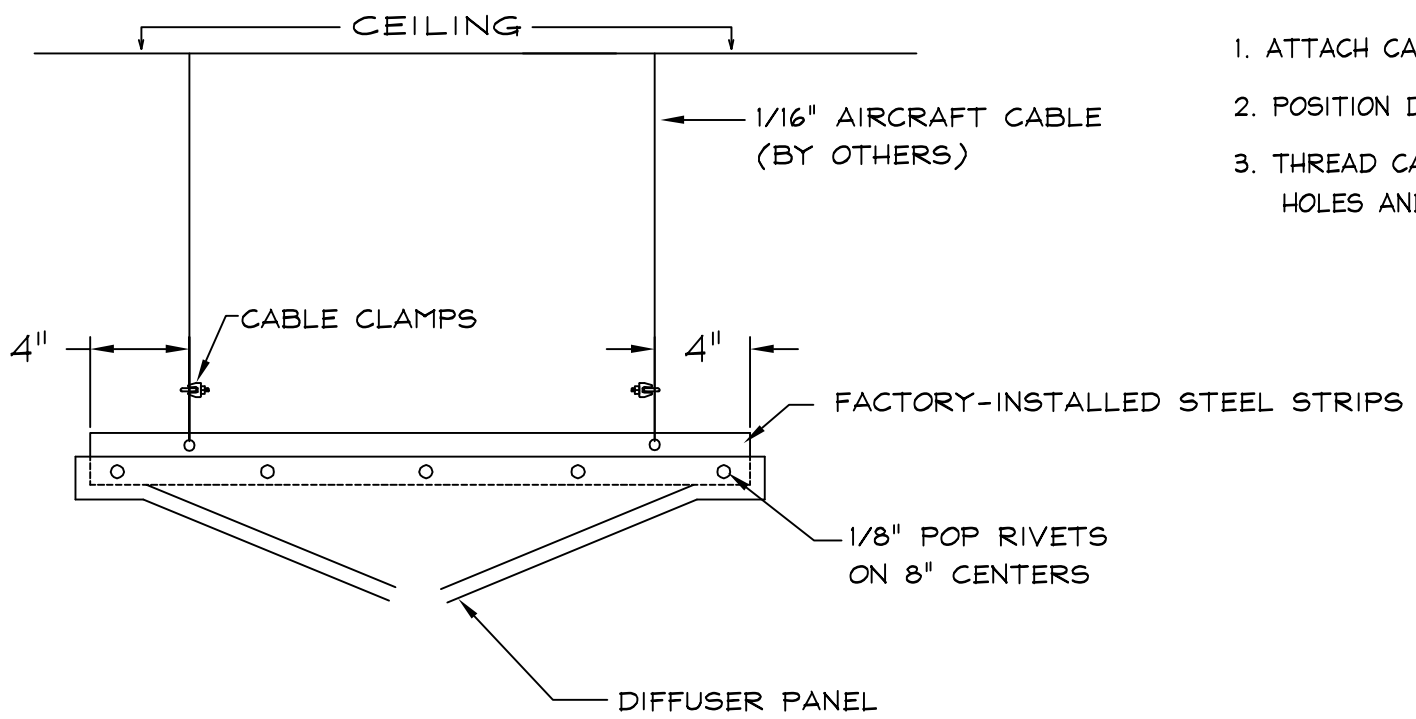


1 1/2" STEEL ANGLE FACTORY INSTALLED
ALONG INSIDE OF DIFFUSER
(4) TOTAL PER DIFFUSER.



1. ATTACH CABLE OR WIRE TO CEILING STRUCTURE
2. POSITION DIFFUSER IN DESIRED LOCATION
3. THREAD CABLE OR WIRE THROUGH SUSPENSION HOLES AND FASTEN TO ITSELF

CEILING SUSPENSION DETAIL
FOR GEOMETRIC DIFFUSER



TITLE
CEILING-SUSPENDED
GEOMETRIC DIFFUSER

LAST DATE
REVISED
4/23/09

DRAWN BY
JAA

DRAWING NO.
INSTAL22.DWG
T-DWG