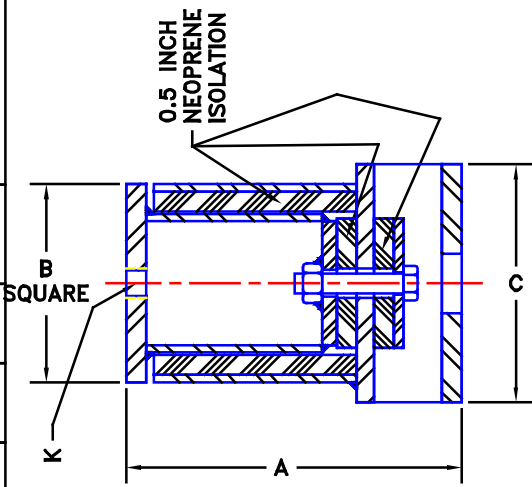
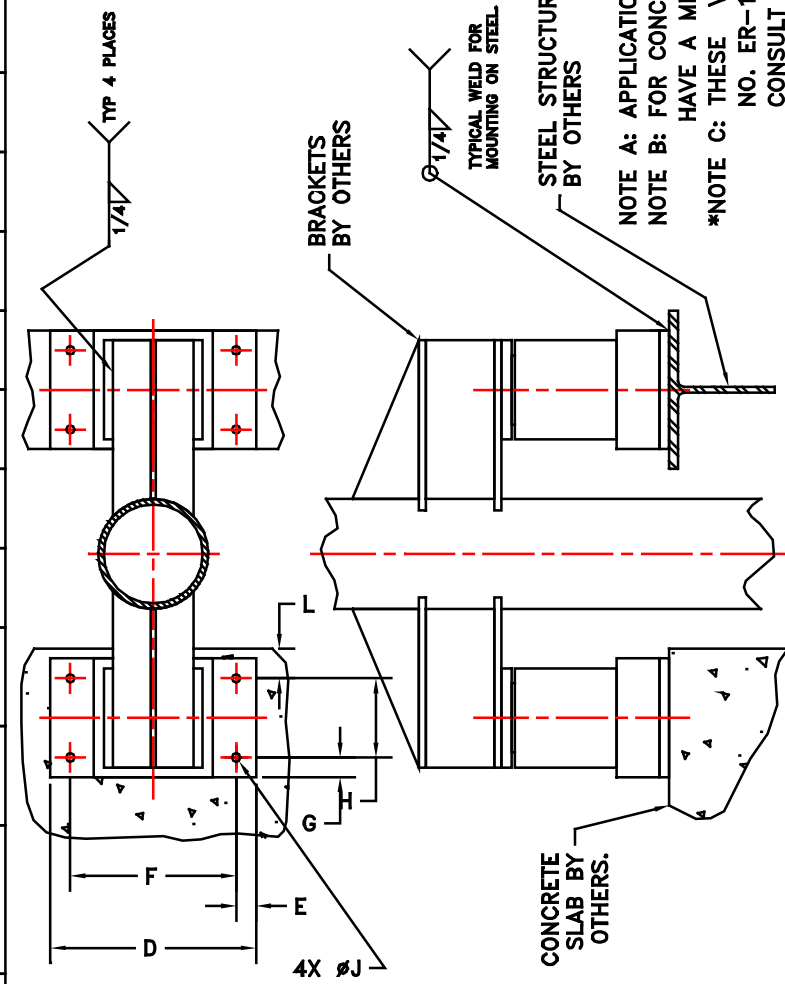


ITEM NO.	MODEL	CAPACITY (LBS)		A	B	C	D	E	F	G	H	J	K	L MIN *	ANCHOR EMBED * #	CONCRETE CAP. REDUCTION FACTOR *
		SINGLE	PAIR													
01	KPA-4000	4000	8000	6.34	5.00	6.00	10.63	1.00	8.63	1.00	4.00	0.69	0.75	3.88	5.13	0.74
02	KPA-8000	8000	16000	8.47	5.00	6.00	10.63	1.00	8.63	1.00	4.00	0.69	0.75	3.88	5.13	0.29
03	KPA-16000	16000	32000	10.90	8.00	9.00	16.00	1.63	12.75	1.63	5.75	0.81	1.00	5.00	6.63	0.20
04	KPA-32000	32000	74000	11.80	10.00	11.00	20.50	1.94	16.63	1.94	7.13	1.06	N/A	7.38	7.38	0.16



TYPICAL GUIDE SECTION VIEW
2X DRAWING SCALE



NOTE A: APPLICATION TEMPERATURE RANGE IS 0° F TO 220° F.
 NOTE B: FOR CONCRETE ANCHORS, THE CONCRETE SHALL HAVE A MIN. COMPRESSIVE STRENGTH OF 4000 PSI.
 *NOTE C: THESE VALUES ARE BASED ON ICBO REPORT NO. ER-1372. FOR CONCRETE ANCHOR USE, PLEASE CONSULT WITH KINETICS NOISE CONTROL.

	TITLE	MODEL KPA-90d	LAST DATE REVISED	REVISION NO.	DRAWING NO.
	ANCHOR INSTALLATION	ENGLISH VERSION	6-28-01	PWM	SS-20010611 (E)

MODEL KPA (RISER ANCHOR) – 90 DUROMETER

PAGE 2 OF 2

DUBLIN, OHIO, USA • MISSISSAUGA, ONTARIO, CANADA

Toll Free (USA only): 800-959-1229
 International: 614-889-0480
 Fax: 614-889-0540
 World Wide Web: www.kineticsnoise.com
 Email: sales@kineticsnoise.com

DOCUMENT:
R3.1