

CHAPTER P4

KRMS / RQ ELASTOMERIC ISOLATORS AND RESTRAINTS

TABLE OF CONTENTS

| | |
|----------------------------|--------|
| General Description (KRMS) | P4.1.1 |
| General Description (RQ) | P4.1.2 |
| Submittal Data | P4.2 |
| KRMS | P4.2.1 |
| RQ | P4.2.2 |
| Selection Information | P4.3 |
| Load Spreader Plate Data | P4.4 |
| Installation Instructions | P4.5 |

TABLE OF CONTENTS (Chapter P4)

KRMS / RQ ELASTOMERIC ISOLATORS AND RESTRAINTS

RELEASE DATE: 04/09/04



DUBLIN, OHIO, USA • MISSISSAUGA, ONTARIO, CANADA

Toll Free (USA only): 800-959-1229
International: 614-889-0480
Fax: 614-889-0540
World Wide Web: www.kineticsnoise.com
Email: sales@kineticsnoise.com

PAGE:

P4.0



Description

Kinetics Model RQ Vibration Isolators are one-piece molded neoprene mounts with encapsulated metal inserts. The metal inserts provide all-directional resistance for horizontally and vertically applied loads. Each isolator incorporates two bolt-down holes on the bottom load surface and a steel top load plate for attachment to the supported equipment. The neoprene is highly oil resistant and has been designed to operate within the strain limits of the isolator to provide the maximum isolation and longest life expectancy possible using neoprene compounds. Model RQ is designed for up to 0.15" (4 mm) deflection, available in two sizes and four capacities from 500 lbs. to 1300 lbs. (227 kg to 591 kg). Kinetics Model RQ is recommended for the isolation of vibration produced by small pumps, vent sets, low pressure packaged air-handling units, etc., and is usually selected when first cost must be minimized.



Specifications

Vibration isolators shall be neoprene, molded from oil-resistant compounds, with a cast-in-top steel load transfer plate for bolting to supported equipment and a bolt-down plate with holes provided for anchoring to the supporting structure. Isolator shall provide lateral load resistance for loads applied parallel to mounting surface. Neoprene vibration isolators shall have minimum operating static deflections as shown on the Vibration Isolation Schedule or as indicated on the project documents but not exceeding published load capabilities.

Neoprene vibration isolators shall be Model RQ, by Kinetics Noise Control, Inc.

Model RQ General Description

PAGE 1 OF 1

RELEASE DATE: 05/13/04



DUBLIN, OHIO, USA • MISSISSAUGA, ONTARIO, CANADA

Toll Free (USA only): 800-959-1229
International: 614-889-0480
Fax: 614-889-0540
World Wide Web: www.kineticsnoise.com
Email: sales@kineticsnoise.com

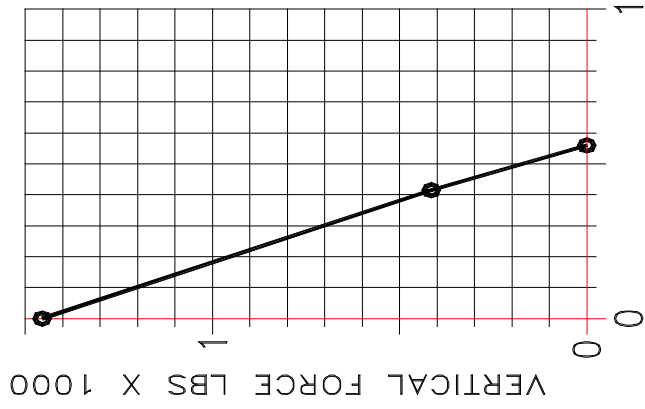
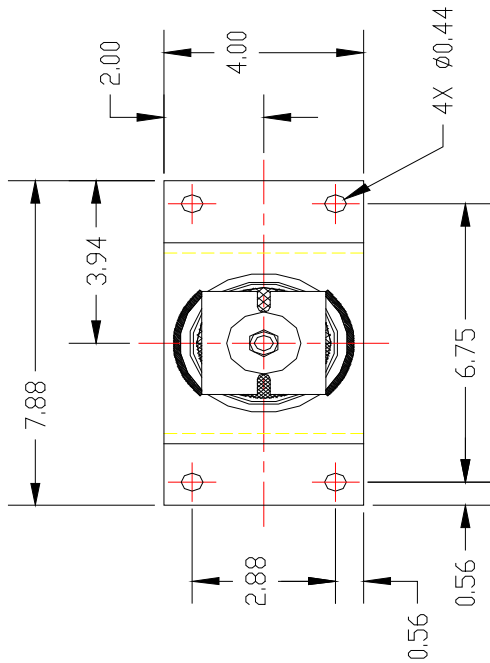
PAGE:

P4.1.2

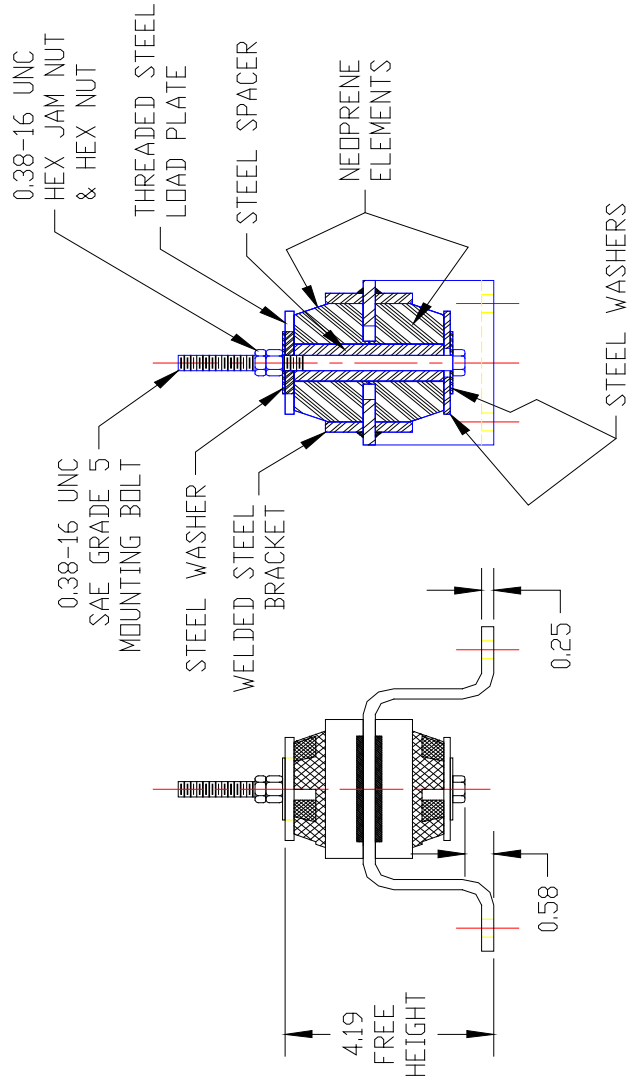


| MODEL | RATED LOAD (LBS) | RATED DEFLECTION (CONFINED) (IN) | DUROMETER (SHORE A) | COLOR CODE DOT |
|------------|------------------|----------------------------------|---------------------|----------------|
| KRMS-A-125 | 125 | 0.25 | 30 | BLACK |
| KRMS-A-175 | 175 | 0.25 | 40 | RED |
| KRMS-A-300 | 300 | 0.25 | 55 | GREEN |
| KRMS-A-450 | 450 | 0.25 | 65 | WHITE |
| KRMS-A-700 | 700 | 0.25 | 75 | PURPLE |

REFERENCE DRAWING: M-20030150



HORIZONTAL FORCE LBS X 1000



KRMS-A-125/700

DRAWING # SS-20030150

RELEASE DATE: 12/19/03



DUBLIN, OHIO, USA • MISSISSAUGA, ONTARIO, CANADA

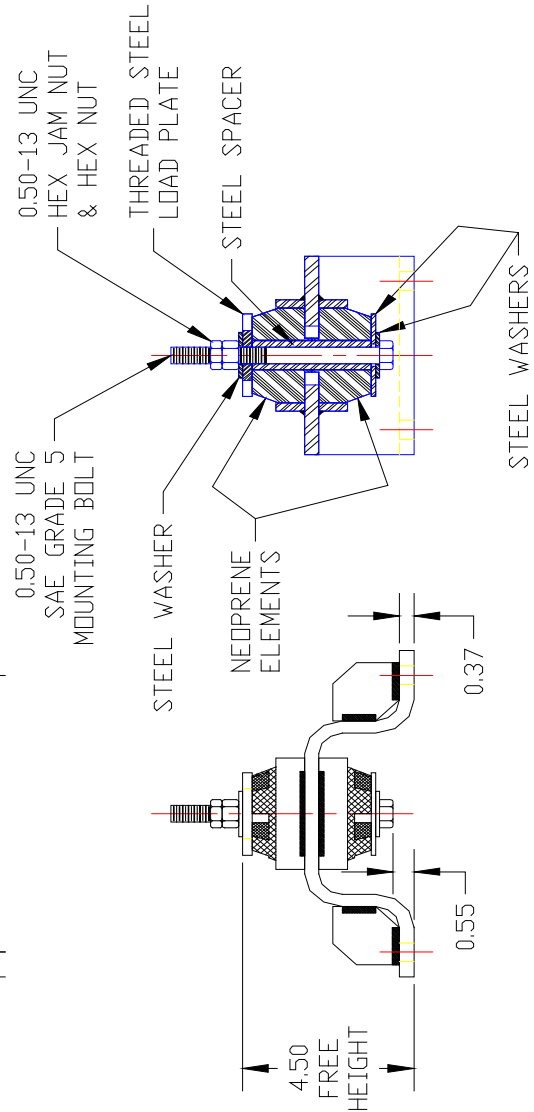
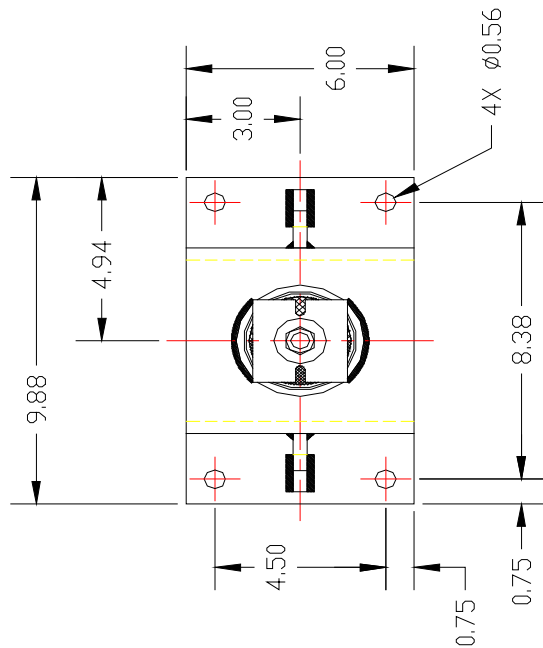
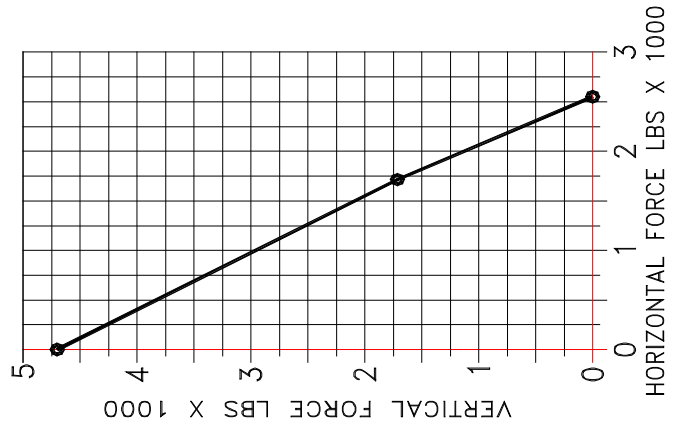
Toll Free (USA only): 800-959-1229
 International: 614-889-0480
 Fax: 614-889-0540
 World Wide Web: www.kineticsnoise.com
 Email: sales@kineticsnoise.com

DOCUMENT:
P4.2.1-1



| MODEL | RATED LOAD (LBS) | RATED DEFLECTION (CONFINED) (IN) | DUROMETER (SHORE A) | COLOR CODE DOT |
|-------------|------------------|----------------------------------|---------------------|----------------|
| KRMS-B-125 | 125 | 0.25 | 30 | BLACK |
| KRMS-B-175 | 175 | 0.25 | 40 | RED |
| KRMS-B-300 | 300 | 0.25 | 55 | GREEN |
| KRMS-B-450 | 450 | 0.25 | 65 | WHITE |
| KRMS-B-700 | 700 | 0.25 | 75 | PURPLE |
| KRMS-B-1100 | 1100 | 0.33 | 80 | YELLOW |
| KRMS-B-2200 | 2200 | 0.33 | 90 | PINK |

REFERENCE DRAWING: M-20030160



KRMS-B-125/2200

DRAWING # SS-20030160

RELEASE DATE: 12/19/03



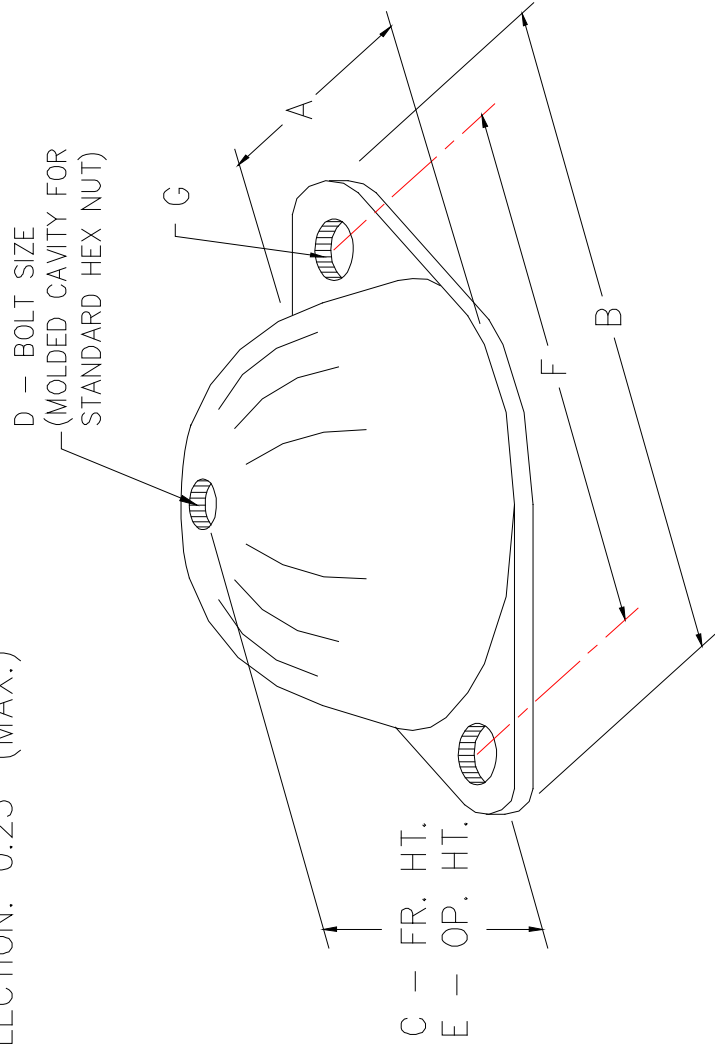
DUBLIN, OHIO, USA • MISSISSAUGA, ONTARIO, CANADA

Toll Free (USA only): 800-959-1229
 International: 614-889-0480
 Fax: 614-889-0540
 World Wide Web: www.kineticsnoise.com
 Email: sales@kineticsnoise.com

DOCUMENT:
P4.2.1-2
 VISCMA MEMBER

| ISOLATOR TYPE | DURO. | RATED COMPRESSION CAPACITY | RATED DEFLECTION | A | B | C | D | E | F | G |
|---------------|-------|----------------------------|------------------|------|------|------|------|------|------|------|
| RQ-500 | 40 | 500 LBS. | 0.15 | 3.25 | 5.38 | 1.65 | 0.50 | 1.50 | 4.12 | 0.53 |
| RQ-750 | 50 | 750 LBS. | 0.15 | 3.25 | 5.38 | 1.65 | 0.50 | 1.50 | 4.12 | 0.53 |
| RQ-1000 | 50 | 1000 LBS. | 0.15 | 3.88 | 6.25 | 1.65 | 0.62 | 1.50 | 5.00 | 0.53 |
| RQ-1300 | 60 | 1300 LBS. | 0.15 | 3.88 | 6.25 | 1.65 | 0.62 | 1.50 | 5.00 | 0.53 |
| RQ-1950 | 70 | 1950 LBS. | 0.15 | 3.88 | 6.25 | 1.65 | 0.62 | 1.50 | 5.00 | 0.53 |

HORIZONTAL SHEAR CAPACITY: 1800 LBS.
HORIZONTAL DEFLECTION: 0.25" (MAX.)



MODEL RQ

DRAWING # S-02.05-1C

RELEASE DATE: 12/19/03



DUBLIN, OHIO, USA • MISSISSAUGA, ONTARIO, CANADA

Toll Free (USA only): 800-959-1229
International: 614-889-0480
Fax: 614-889-0540
World Wide Web: www.kineticsnoise.com
Email: sales@kineticsnoise.com

DOCUMENT:

P4.2.2

