

TABLE OF CONTENTS

ARCHITECTURAL RESTRAINT ELEMENTS

General Description	P9.1
Floating Floor Submittal Data	
FFR-1 (Embedded Floor Restraint)	P9.2.1
FFR-2 (Embedded Floor Restraint)	P9.2.2
PERIMETER PADS	P9.2.3
Isolated Ceiling Component Submittal Data	
KSWC Cable Kits	P9.3.1
Isolated Wall Component Submittal Data	
PSB (Wall Sway Brace)	P9.4.1
IPRB (Wall Restraint Angle Clip [Top Edge])	P9.4.2
KSWB (Neoprene Resilient Wall Clip)	P9.4.3
Selection Information	P9.5
Installation Instructions	P9.6

TABLE OF CONTENTS (Chapter P9)

FLOATING FLOOR RESTRAINTS

RELEASE DATE: 10/20/03



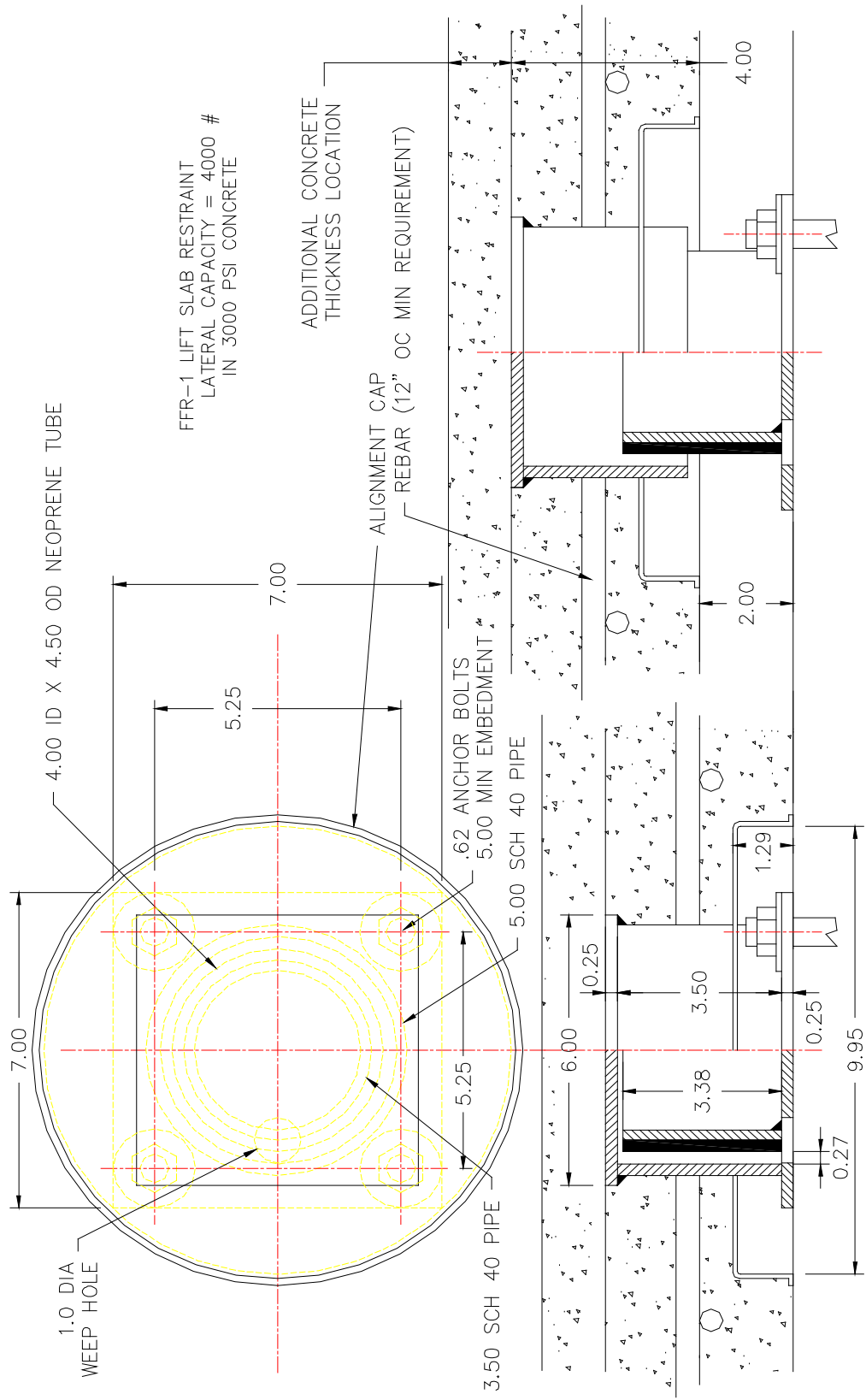
DUBLIN, OHIO, USA • MISSISSAUGA, ONTARIO, CANADA

Toll Free (USA only): 800-959-1229
International: 614-889-0480
Fax: 614-889-0540
World Wide Web: www.kineticsnoise.com
Email: sales@kineticsnoise.com

PAGE:

P9.0





FFR-1 LIFT SLAB RESTRAINT
 LATERAL CAPACITY = 4000 #
 IN 3000 PSI CONCRETE

ADDITIONAL CONCRETE
 THICKNESS LOCATION

ALIGNMENT CAP
 REBAR (12" OC MIN REQUIREMENT)

FFR-1 FLOOR RESTRAINT (LIFT SLAB)

PAGE 1 OF 1 - DRAWING # SS-20000202

RELEASE DATE: 5/17/04

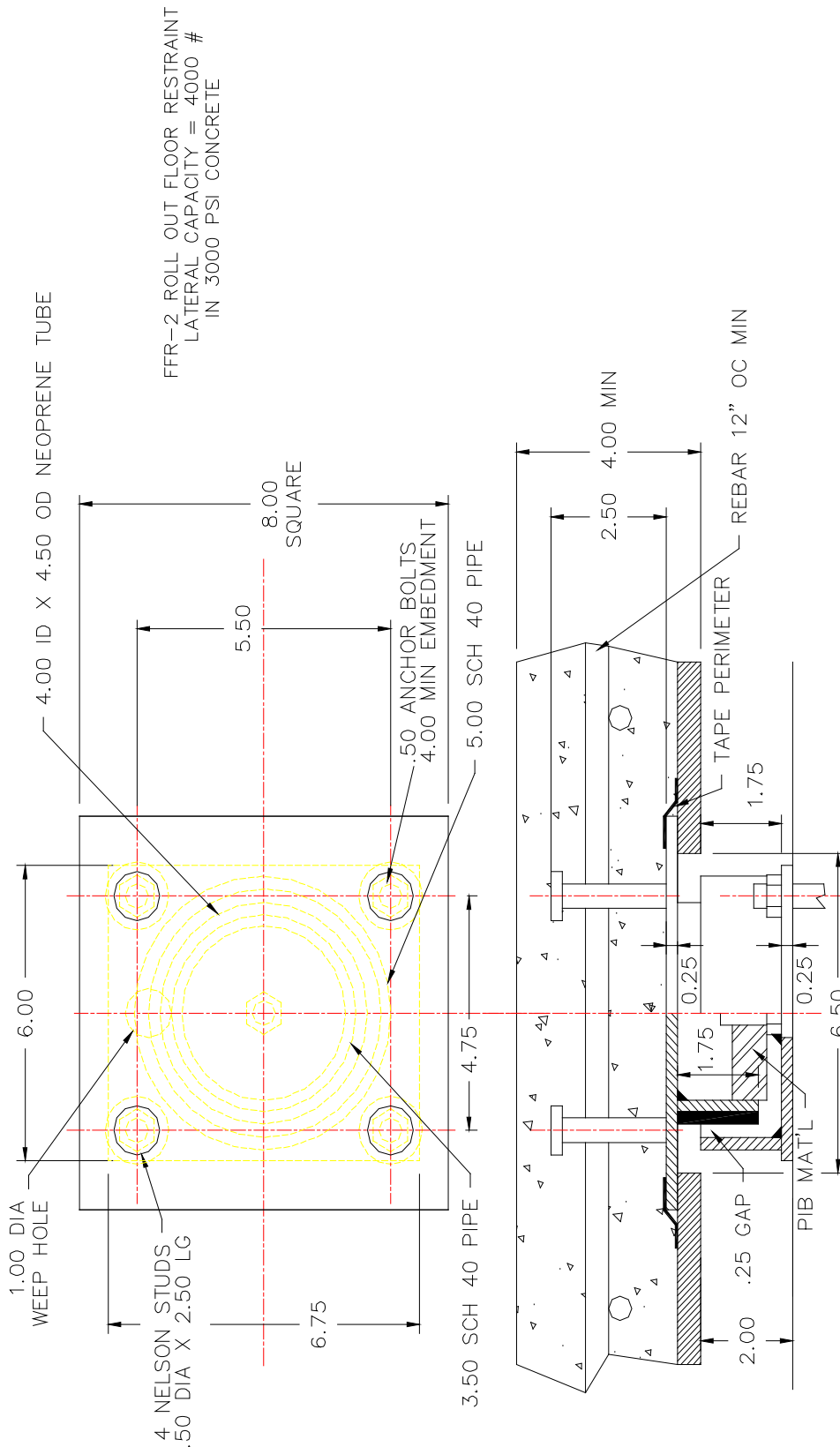


DUBLIN, OHIO, USA • MISSISSAUGA, ONTARIO, CANADA

Toll Free (USA only): 800-959-1229
 International: 614-889-0480
 Fax: 614-889-0540
 World Wide Web: www.kineticsnoise.com
 Email: sales@kineticsnoise.com

DOCUMENT:
P9.2.1





FFR-2 ROLL OUT FLOOR RESTRAINT
 LATERAL CAPACITY = 4000 #
 IN 3000 PSI CONCRETE

FFR-2 FLOOR RESTRAINT (ROLL OUT SYSTEM)

PAGE 1 OF 1 - DRAWING # SS-20000203

RELEASE DATE: 5/17/04



DUBLIN, OHIO, USA • MISSISSAUGA, ONTARIO, CANADA

Toll Free (USA only): 800-959-1229
 International: 614-889-0480
 Fax: 614-889-0540
 World Wide Web: www.kineticsnoise.com
 Email: sales@kineticsnoise.com

DOCUMENT:

P9.2.2

