

KSCU & KSCC NON-ISOLATED RESTRAINED WEIGHT CAPACITY

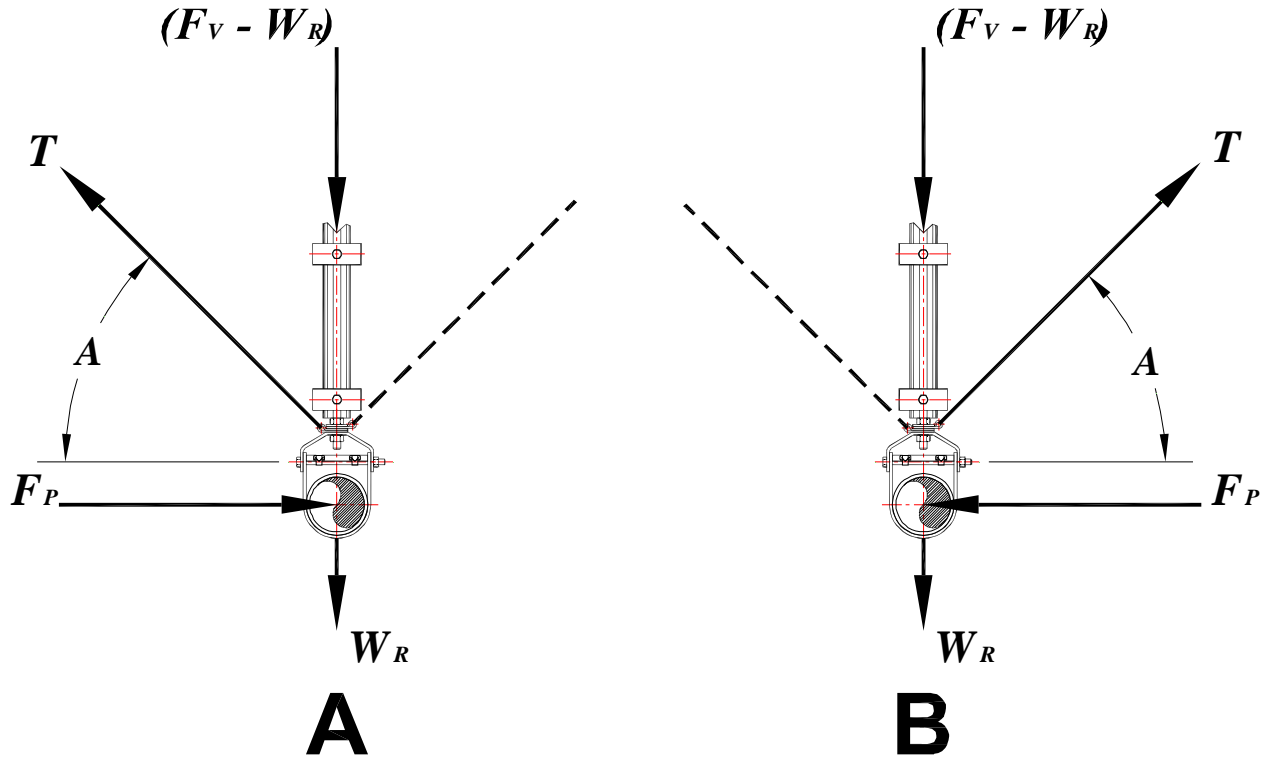


Figure A1.2-1; Forces Acting on a Cable Restrained Single Hanger Rod Supported Pipe or Duct

Introduction:

The purpose of this appendix is to define the capacities of the KSCU and KSCC Seismic Restraint Cable Kits in terms of the building acceleration which they will be able to resist. The capacities expressed in Gs will allow restraints and restraint spacings to be determined when the demand acceleration is known on a particular floor of a building. The basic equation for force and acceleration is given below.

$$F_P = M_R a_E$$

Equation A1.2-1

KSCU & KSCC NON-ISOLATED RESTRAINED WEIGHT CAPACITY

PAGE 1 of 12

SECTION – A1.2

RELEASED ON: 04/12/2010



Toll Free (USA Only): 800-959-1229
 International: 614-889-0480
 FAX: 614-889-0540
 World Wide Web: www.kineticsnoise.com
 E-mail: sales@kineticsnoise.com



Dublin, Ohio, USA • Mississauga, Ontario, Canada

Member

Where:

F_p = the horizontal seismic force acting on the pipe or duct.

M_R = the mass of the pipe or duct that is being restrained.

a_E = the acceleration of the attachment point of the pipe or duct due to the earthquake acceleration.

The horizontal seismic force may be expressed in terms of the cable tension as follows.

$$F_p = T \cos(A) \quad \text{Equation A1.2-2}$$

Where:

A = the seismic restraint installation angle measured with respect to the horizontal.

T = the tension in the cable generated by the horizontal seismic force.

The mass of the pipe or duct will be;

$$M_R = \frac{W_R}{g} = \frac{w_R S_R}{g} \quad \text{Equation A1.2-3}$$

Where:

S_R = the maximum seismic restraint spacing.

W_R = the weight of the pipe or duct that is being restrained.

g = the acceleration due to gravity.

w_R = the distributed weight of the pipe or duct that is being restrained, see Appendix A2.0 and A3.0.

Then, Equation A1.2-1 may be rewritten as follows.

KSCU & KSCC NON-ISOLATED RESTRAINED WEIGHT CAPACITY

PAGE 2 of 12



Dublin, Ohio, USA • Mississauga, Ontario, Canada

Toll Free (USA Only): 800-959-1229
International: 614-889-0480
FAX: 614-889-0540
World Wide Web: www.kineticsnoise.com
E-mail: sales@kineticsnoise.com

SECTION – A1.2

RELEASED ON: 04/12/2010



Member

$$TCos(A) = \left(\frac{w_R S_R}{g} \right) a_E$$

Equation A1.2-4

Let the cable tension be equal to the maximum allowable Seismic Cable Tension Rating (T_A) in (ASD) units, and solve for the acceleration.

$$a_E = \frac{g T_A Cos(A)}{w_R S_R}$$

Equation A1.2-5

And;

$$G = \frac{a_E}{g} = \frac{T_A Cos(A)}{w_R S_R} = \frac{T_A Cos(A)}{W_R} \text{ ASD}$$

Equation A1.2-6

$$G = \frac{a_E}{g} = \frac{1.4 T_A Cos(A)}{w_R S_R} = \frac{1.4 T_A Cos(A)}{W_R} \text{ LRFD}$$

Equation A1.2-7

If the desired G level is known from the code based analysis, then the allowable restrained weight may be computed.

$$W_R = \frac{T_A Cos(A)}{G} \text{ ASD}$$

Equation A1.2-8

$$W_R = \frac{1.4 T_A Cos(A)}{G} \text{ LRFD}$$

Equation A1.2-9

The designation codes for the cable kits and attachment kits provided by Kinetics Noise Control are given in Tables A1.2-1 through A1.2-3.

KSCU & KSCC NON-ISOLATED RESTRAINED WEIGHT CAPACITY

PAGE 3 of 12

SECTION – A1.2

RELEASED ON: 04/12/2010



Dublin, Ohio, USA • Mississauga, Ontario, Canada

Toll Free (USA Only): 800-959-1229
 International: 614-889-0480
 FAX: 614-889-0540
 World Wide Web: www.kineticsnoise.com
 E-mail: sales@kineticsnoise.com



Member

Table A1.2-1; Seismic Restraint Cable Kit vs. Code Cross-Reference

KNC Restraint Kit Code	Restraint Kit Description
K2	KSCU-2 Cable Kit – 2 mm Cable & GRIPPLE HANGFAST No, 2 Connectors
K3	KSCU-3 Cable Kit – 3 mm Cable & GRIPPLE HANGFAST No, 3 Connectors
K4	KSCU-4 Cable Kit – 5 mm Cable & GRIPPLE HANGFAST No, 4 Connectors
K5	KSCU-5 Cable Kit – 6 mm Cable & GRIPPLE Lockable 6 mm Connectors
C1	KSCC-250 Cable Kit – 1/4" Cable & Saddle + U-bolt Connectors
C2	KSCC-375 Cable Kit – 3/8" Cable & Saddle + U-bolt Connectors
C3	KSCC-500 Cable Kit – 1/2" Cable & Saddle + U-bolt Connectors
F	Direct Mounted to Floor or Roof Using Anchor Bolts
W	Direct Mounted to Wall Using Anchor Bolts

Table A1.2-2; Structural Concrete/Steel Attachment Kit vs. Code Cross-Reference

KNC Attachment Kit Code	Attachment Kit Description per Restraint Cable Note: Through bolts & nuts of the same size may be used for each kit and code shown below.
X1	(1) 1/4" Concrete Anchor (with Grommet)
X2	(1) 3/8" Concrete Anchor
X3	(1) 1/2" Concrete Anchor
Y1	(1) 5/8" Concrete Anchor
Y2	(1) 3/4" Concrete Anchor
Y3	(1) 7/8" Concrete Anchor
Z1	(2) 3/8" Concrete Anchors with Oversized Base Plate
Z2	(4) 3/8" Concrete Anchors with Oversized Base Plate
Z3	(2) 1/2" Concrete Anchors with Oversized Base Plate
Z4	(4) 1/2" Concrete Anchors with Oversized Base Plate

KSCU & KSCC NON-ISOLATED RESTRAINED WEIGHT CAPACITY

PAGE 4 of 12

SECTION – A1.2

RELEASED ON: 04/12/2010



Dublin, Ohio, USA • Mississauga, Ontario, Canada

Toll Free (USA Only): 800-959-1229
 International: 614-889-0480
 FAX: 614-889-0540
 World Wide Web: www.kineticsnoise.com
 E-mail: sales@kineticsnoise.com



Member

Table A1.2-3; Structural Wood/Steel Attachment Kit vs. Code Cross-Reference

KNC Attachment Kit Code	Attachment Kit Description per Restraint Cable Note: Through bolts & nuts of the same size may be used for each kit and code shown below.
W1	(1) 1/4" Lag Screw (with Grommet)
W2	(1) 3/8" Lag Screw
W3	(1) 1/2" Lag Screw
W4	(1) 5/8" Lag Screw
W5	(1) 3/4" Lag Screw
W6	(1) 7/8" Lag Screw
W7	(2) 3/8" Lag Screws with Oversized Base Plate
W8	(4) 3/8" Lag Screws with Oversized Base Plate
W9	(2) 1/2" Lag Screws with Oversized Base Plate
W10	(4) 1/2" Lag Screws with Oversized Base Plate

Table A1.2-4; **K2** Restraint Seismic Cable Kit Restrained Weight Capacity (lbs – LRFD)
Restraint Installation Angle = 45°

Horizontal Acceleration Gs	Attachment Kit Designation					
	X2 (Steel)		X2 (Concrete)		W2 (Wood)	
	Orientation 1	Orientation 2	Orientation 1	Orientation 2	Orientation 1	Orientation 2
0.25	988	988	988	988	988	988
0.50	494	494	494	494	494	494
0.75	329	329	329	329	329	329
1.00	247	247	247	247	247	247
1.25	198	198	198	198	198	198
1.50	165	165	165	165	165	165
2.00	124	124	124	124	124	124
3.00	82	82	82	82	82	82

KSCU & KSCC NON-ISOLATED RESTRAINED WEIGHT CAPACITY

PAGE 5 of 12

SECTION – A1.2

RELEASED ON: 04/12/2010



Toll Free (USA Only): 800-959-1229
 International: 614-889-0480
 FAX: 614-889-0540
 World Wide Web: www.kineticsnoise.com
 E-mail: sales@kineticsnoise.com



Dublin, Ohio, USA • Mississauga, Ontario, Canada

Member

KINETICS™ Pipe & Duct Seismic Application Manual

Table A1.2-5; **K3** Restraint Seismic Cable Kit Restrained Weight Capacity (lbs – LRFD)
Restraint Installation Angle = 45°

Horizontal Acceleration Gs	Attachment Kit Designation							
	X2 (Steel)		X2 (Concrete)		W2 (Wood)		W7 (Wood)	
	Orientation 1	Orientation 2	Orientation 1	Orientation 2	Orientation 1	Orientation 2	Orientation 1	Orientation 2
0.25	1980	1980	1520	1520	1608	1608	1980	1980
0.50	990	990	760	760	804	804	990	990
0.75	660	660	507	507	536	536	660	660
1.00	495	495	380	380	402	402	495	495
1.25	396	396	304	304	322	322	396	396
1.50	330	330	253	253	268	268	330	330
2.00	248	248	190	190	201	201	248	248
3.00	165	165	127	127	134	134	165	165

Table A1.2-6; **K4** Restraint Seismic Cable Kit Restrained Weight Capacity (lbs – LRFD)
Restraint Installation Angle = 45°

Horizontal Acceleration Gs	Attachment Kit Designation											
	X3 (Steel)		X3 (Concrete)		Z1 (Concrete)		W3 (Wood)		W7 (Wood)		W8 (Wood)	
	Orientation 1	Orientation 2	Orientation 1	Orientation 2	Orientation 1	Orientation 2	Orientation 1	Orientation 2	Orientation 1	Orientation 2	Orientation 1	Orientation 2
0.25	4904	4904	3320	3320	4640	4640	2836	2836	4372	4372	4904	4904
0.50	2452	2452	1660	1660	2320	2320	1418	1418	2186	2186	2452	2452
0.75	1635	1635	1107	1107	1547	1547	945	945	1457	1457	1635	1635
1.00	1226	1226	830	830	1160	1160	709	709	1093	1093	1226	1226
1.25	981	981	664	664	928	928	567	567	874	874	981	981
1.50	817	817	553	553	773	773	473	473	729	729	817	817
2.00	613	613	415	415	580	580	355	355	547	547	613	613
3.00	409	409	277	277	387	387	236	236	364	364	409	409

KSCU & KSCC NON-ISOLATED RESTRAINED WEIGHT CAPACITY

PAGE 6 of 12

SECTION – A1.2

RELEASED ON: 04/12/2010



Toll Free (USA Only): 800-959-1229
 International: 614-889-0480
 FAX: 614-889-0540
 World Wide Web: www.kineticsnoise.com
 E-mail: sales@kineticsnoise.com



Member

Dublin, Ohio, USA • Mississauga, Ontario, Canada

KINETICS™ Pipe & Duct Seismic Application Manual

Table A1.2-7; **K5** Restraint Seismic Cable Kit Restrained Weight Capacity (lbs – LRFD)
Restraint Installation Angle = 45°

Horizontal Acceleration Gs	Attachment Kit Designation													
	X3 (Steel)		X3 (Concrete)		Z1 (Concrete)		Z2 (Concrete)		W3 (Wood)		W7 (Wood)		W8 (Wood)	
	Orientation 1	Orientation 2	Orientation 1	Orientation 2	Orientation 1	Orientation 2	Orientation 1	Orientation 2	Orientation 1	Orientation 2	Orientation 1	Orientation 2	Orientation 1	Orientation 2
0.25	10868	10868	3320	3320	4640	4640	9276	9276	2836	2836	4372	4372	8740	8740
0.50	5434	5434	1660	1660	2320	2320	4638	4638	1418	1418	2186	2186	4370	4370
0.75	3623	3623	1107	1107	1547	1547	3092	3092	945	945	1457	1457	2913	2913
1.00	2717	2717	830	830	1160	1160	2319	2319	709	709	1093	1093	2185	2185
1.25	2174	2174	664	664	928	928	1855	1855	567	567	874	874	1748	1748
1.50	1811	1811	553	553	773	773	1546	1546	473	473	729	729	1457	1457
2.00	1359	1359	415	415	580	580	1160	1160	355	355	547	547	1093	1093
3.00	906	906	277	277	387	387	773	773	236	236	364	364	728	728

Table A1.2-8; **C1** Restraint Seismic Cable Kit Restrained Weight Capacity (lbs – LRFD)
Restraint Installation Angle = 45°

Horizontal Acceleration Gs	Attachment Kit Designation											
	Y2 (Steel)		Y2 (Concrete)		Z3 (Concrete)		W6 (Wood)		W9 (Wood)		W10 (Wood)	
	Orientation 1	Orientation 2	Orientation 1	Orientation 2	Orientation 1	Orientation 2	Orientation 1	Orientation 2	Orientation 1	Orientation 2	Orientation 1	Orientation 2
0.25	10396	10396	6480	6480	9688	9688	7288	7288	6692	6692	10396	10396
0.50	5198	5198	3240	3240	4844	4844	3644	3644	3346	3346	5198	5198
0.75	3465	3465	2160	2160	3229	3229	2429	2429	2231	2231	3465	3465
1.00	2599	2599	1620	1620	2422	2422	1822	1822	1673	1673	2599	2599
1.25	2079	2079	1296	1296	1938	1938	1458	1458	1338	1338	2079	2079
1.50	1733	1733	1080	1080	1615	1615	1215	1215	1115	1115	1733	1733
2.00	1300	1300	810	810	1211	1211	911	911	837	837	1300	1300
3.00	866	866	540	540	807	807	607	607	558	558	866	866

KSCU & KSCC NON-ISOLATED RESTRAINED WEIGHT CAPACITY

PAGE 7 of 12

SECTION – A1.2

RELEASED ON: 04/12/2010



Toll Free (USA Only): 800-959-1229
 International: 614-889-0480
 FAX: 614-889-0540
 World Wide Web: www.kineticsnoise.com
 E-mail: sales@kineticsnoise.com



Member

Dublin, Ohio, USA • Mississauga, Ontario, Canada

KINETICS™ Pipe & Duct Seismic Application Manual

Table A1.2-9; **C2** Restraint Seismic Cable Kit Restrained Weight Capacity (lbs – LRFD)
Restraint Installation Angle = 45°

Horizontal Acceleration Gs	Attachment Kit Designation													
	Y2 (Steel)		Y2 (Concrete)		Z3 (Concrete)		Z4 (Concrete)		W5 (Wood)		W9 (Wood)		W10 (Wood)	
	Orientation 1	Orientation 2	Orientation 1	Orientation 2	Orientation 1	Orientation 2	Orientation 1	Orientation 2	Orientation 1	Orientation 2	Orientation 1	Orientation 2	Orientation 1	Orientation 2
0.25	21384	21384	7192	7192	9500	9500	19000	19000	5900	5900	6652	6652	13308	13308
0.50	10692	10692	3596	3596	4750	4750	9500	9500	2950	2950	3326	3326	6654	6654
0.75	7128	7128	2397	2397	3167	3167	6333	6333	1967	1967	2217	2217	4436	4436
1.00	5346	5346	1798	1798	2375	2375	4750	4750	1475	1475	1663	1663	3327	3327
1.25	4277	4277	1438	1438	1900	1900	3800	3800	1180	1180	1330	1330	2662	2662
1.50	3564	3564	1199	1199	1583	1583	3167	3167	983	983	1109	1109	2218	2218
2.00	2673	2673	899	899	1188	1188	2375	2375	738	738	832	832	1664	1664
3.00	1782	1782	599	599	792	792	1583	1583	492	492	554	554	1109	1109

Table A1.2-10; **C3** Restraint Seismic Cable Kit Restrained Weight Capacity (lbs – LRFD)
Restraint Installation Angle = 45°

Horizontal Acceleration Gs	Attachment Kit Designation													
	Y2 (Steel)		Y2 (Concrete)		Z3 (Concrete)		Z4 (Concrete)		W5 (Wood)		W9 (Wood)		W10 (Wood)	
	Orientation 1	Orientation 2	Orientation 1	Orientation 2	Orientation 1	Orientation 2	Orientation 1	Orientation 2	Orientation 1	Orientation 2	Orientation 1	Orientation 2	Orientation 1	Orientation 2
0.25	31984	31984	7192	7192	9500	9500	19000	19000	5900	5900	6652	6652	13308	13308
0.50	15992	15992	3596	3596	4750	4750	9500	9500	2950	2950	3326	3326	6654	6654
0.75	10661	10661	2397	2397	3167	3167	6333	6333	1967	1967	2217	2217	4436	4436
1.00	7996	7996	1798	1798	2375	2375	4750	4750	1475	1475	1663	1663	3327	3327
1.25	6397	6397	1438	1438	1900	1900	3800	3800	1180	1180	1330	1330	2662	2662
1.50	5331	5331	1199	1199	1583	1583	3167	3167	983	983	1109	1109	2218	2218
2.00	3998	3998	899	899	1188	1188	2375	2375	738	738	832	832	1664	1664
3.00	2665	2665	599	599	792	792	1583	1583	492	492	554	554	1109	1109

KSCU & KSCC NON-ISOLATED RESTRAINED WEIGHT CAPACITY

PAGE 8 of 12

SECTION – A1.2

RELEASED ON: 04/12/2010



Toll Free (USA Only): 800-959-1229
 International: 614-889-0480
 FAX: 614-889-0540
 World Wide Web: www.kineticsnoise.com
 E-mail: sales@kineticsnoise.com



Member

Dublin, Ohio, USA • Mississauga, Ontario, Canada

KINETICS™ Pipe & Duct Seismic Application Manual

Table A1.2-11; **K2** Restraint Seismic Cable Kit Restrained Weight Capacity (lbs – LRFD)
Restraint Installation Angle = 60°

Horizontal Acceleration Gs	Attachment Kit Designation					
	X2 (Steel)		X2 (Concrete)		W2 (Wood)	
	Orientation 1	Orientation 2	Orientation 1	Orientation 2	Orientation 1	Orientation 2
0.25	700	700	700	700	700	700
0.50	350	350	350	350	350	350
0.75	233	233	233	233	233	233
1.00	175	175	175	175	175	175
1.25	140	140	140	140	140	140
1.50	117	117	117	117	117	117
2.00	88	88	88	88	88	88
3.00	58	58	58	58	58	58

Table A1.2-12; **K3** Restraint Seismic Cable Kit Restrained Weight Capacity (lbs – LRFD)
Restraint Installation Angle = 60°

Horizontal Acceleration Gs	Attachment Kit Designation									
	X2 (Steel)		X2 (Concrete)		Z1 (Concrete)		W2 (Wood)		W7 (Wood)	
	Orientation 1	Orientation 2	Orientation 1	Orientation 2	Orientation 1	Orientation 2	Orientation 1	Orientation 2	Orientation 1	Orientation 2
0.25	1400	1400	948	1296	1400	1400	1180	1056	1400	1400
0.50	700	700	474	648	700	700	590	528	700	700
0.75	467	467	316	432	467	467	393	352	467	467
1.00	350	350	237	324	350	350	295	264	350	350
1.25	280	280	190	259	280	280	236	211	280	280
1.50	233	233	158	216	233	233	197	176	233	233
2.00	175	175	119	162	175	175	148	132	175	175
3.00	117	117	79	108	117	117	98	88	117	117

KSCU & KSCC NON-ISOLATED RESTRAINED WEIGHT CAPACITY

PAGE 9 of 12

SECTION – A1.2

RELEASED ON: 04/12/2010



Toll Free (USA Only): 800-959-1229
 International: 614-889-0480
 FAX: 614-889-0540
 World Wide Web: www.kineticsnoise.com
 E-mail: sales@kineticsnoise.com



Dublin, Ohio, USA • Mississauga, Ontario, Canada

Member

KINETICS™ Pipe & Duct Seismic Application Manual

Table A1.2-13; **K4** Restraint Seismic Cable Kit Restrained Weight Capacity (lbs – LRFD)
Restraint Installation Angle = 60°

Horizontal Acceleration Gs	Attachment Kit Designation											
	X3 (Steel)		X3 (Concrete)		Z1 (Concrete)		W3 (Wood)		W7 (Wood)		W8 (Wood)	
	Orientation 1	Orientation 2	Orientation 1	Orientation 2	Orientation 1	Orientation 2	Orientation 1	Orientation 2	Orientation 1	Orientation 2	Orientation 1	Orientation 2
0.25	3468	3468	2060	2856	2784	3468	2008	1944	3340	2684	3468	3468
0.50	1734	1734	1030	1428	1392	1734	1004	972	1670	1342	1734	1734
0.75	1156	1156	687	952	928	1156	669	648	1113	895	1156	1156
1.00	867	867	515	714	696	867	502	486	835	671	867	867
1.25	694	694	412	571	557	694	402	389	668	537	694	694
1.50	578	578	343	476	464	578	335	324	557	447	578	578
2.00	434	434	258	357	348	434	251	243	418	336	434	434
3.00	289	289	172	238	232	289	167	162	278	224	289	289

Table A1.2-14; **K5** Restraint Seismic Cable Kit Restrained Weight Capacity (lbs – LRFD)
Restraint Installation Angle = 60°

Horizontal Acceleration Gs	Attachment Kit Designation													
	X3 (Steel)		X3 (Concrete)		Z1 (Concrete)		Z2 (Concrete)		W3 (Wood)		W7 (Wood)		W8 (Wood)	
	Orientation 1	Orientation 2	Orientation 1	Orientation 2	Orientation 1	Orientation 2	Orientation 1	Orientation 2	Orientation 1	Orientation 2	Orientation 1	Orientation 2	Orientation 1	Orientation 2
0.25	6688	6688	2060	2856	2784	3888	5568	6688	2008	2008	3340	2684	6680	5372
0.50	3344	3344	1030	1428	1392	1944	2784	3344	1004	1004	1670	1342	3340	2686
0.75	2229	2229	687	952	928	1296	1856	2229	669	669	1113	895	2227	1791
1.00	1672	1672	515	714	696	972	1392	1672	502	502	835	671	1670	1343
1.25	1338	1338	412	571	557	778	1114	1338	402	402	668	537	1336	1074
1.50	1115	1115	343	476	464	648	928	1115	335	335	557	447	1113	895
2.00	836	836	258	357	348	486	696	836	251	251	418	336	835	672
3.00	557	557	172	238	232	324	464	557	167	167	278	224	557	448

KSCU & KSCC NON-ISOLATED RESTRAINED WEIGHT CAPACITY

PAGE 10 of 12

SECTION – A1.2

RELEASED ON: 04/12/2010



Toll Free (USA Only): 800-959-1229
 International: 614-889-0480
 FAX: 614-889-0540
 World Wide Web: www.kineticsnoise.com
 E-mail: sales@kineticsnoise.com



Member

Dublin, Ohio, USA • Mississauga, Ontario, Canada

KINETICS™ Pipe & Duct Seismic Application Manual

Table A1.2-15; **C1** Restraint Seismic Cable Kit Restrained Weight Capacity (lbs – LRFD)
Restraint Installation Angle = 60°

Horizontal Acceleration Gs	Attachment Kit Designation											
	Y2 (Steel)		Y2 (Concrete)		Z3 (Concrete)		W6 (Wood)		W9 (Wood)		W10 (Wood)	
	Orientation 1	Orientation 2	Orientation 1	Orientation 2	Orientation 1	Orientation 2	Orientation 1	Orientation 2	Orientation 1	Orientation 2	Orientation 1	Orientation 2
0.25	7352	7352	3204	7352	5848	7352	4588	4828	5232	4064	7352	7352
0.50	3676	3676	1602	3676	2924	3676	2294	2414	2616	2032	3676	3676
0.75	2451	2451	1068	2451	1949	2451	1529	1609	1744	1355	2451	2451
1.00	1838	1838	801	1838	1462	1838	1147	1207	1308	1016	1838	1838
1.25	1470	1470	641	1470	1170	1470	918	966	1046	813	1470	1470
1.50	1225	1225	534	1225	975	1225	765	805	872	677	1225	1225
2.00	919	919	401	919	731	919	574	604	654	508	919	919
3.00	613	613	267	613	487	613	382	402	436	339	613	613

Table A1.2-16; **C2** Restraint Seismic Cable Kit Restrained Weight Capacity (lbs – LRFD)
Restraint Installation Angle = 60°

Horizontal Acceleration Gs	Attachment Kit Designation													
	Y2 (Steel)		Y2 (Concrete)		Z3 (Concrete)		Z4 (Concrete)		W5 (Wood)		W9 (Wood)		W10 (Wood)	
	Orientation 1	Orientation 2	Orientation 1	Orientation 2	Orientation 1	Orientation 2	Orientation 1	Orientation 2	Orientation 1	Orientation 2	Orientation 1	Orientation 2	Orientation 1	Orientation 2
0.25	15120	15120	3948	7416	5832	7956	11664	15120	5228	3800	5224	4064	10448	8124
0.50	7560	7560	1974	3708	2916	3978	5832	7560	2614	1900	2612	2032	5224	4062
0.75	5040	5040	1316	2472	1944	2652	3888	5040	1743	1267	1741	1355	3483	2708
1.00	3780	3780	987	1854	1458	1989	2916	3780	1307	950	1306	1016	2612	2031
1.25	3024	3024	790	1483	1166	1591	2333	3024	1046	760	1045	813	2090	1625
1.50	2520	2520	658	1236	972	1326	1944	2520	871	633	871	677	1741	1354
2.00	1890	1890	494	927	729	995	1458	1890	654	475	653	508	1306	1016
3.00	1260	1260	329	618	486	663	972	1260	436	317	435	339	871	677

KSCU & KSCC NON-ISOLATED RESTRAINED WEIGHT CAPACITY PAGE 11 of 12

SECTION – A1.2

RELEASED ON: 04/12/2010



Toll Free (USA Only): 800-959-1229
 International: 614-889-0480
 FAX: 614-889-0540
 World Wide Web: www.kineticsnoise.com
 E-mail: sales@kineticsnoise.com



Member

Dublin, Ohio, USA • Mississauga, Ontario, Canada

KINETICS™ Pipe & Duct Seismic Application Manual

Table A1.2-17; **C3** Restraint Seismic Cable Kit Restrained Weight Capacity (lbs – LRFD)
Restraint Installation Angle = 60°

Horizontal Acceleration Gs	Attachment Kit Designation													
	Y2 (Steel)		Y2 (Concrete)		Z3 (Concrete)		Z4 (Concrete)		W5 (Wood)		W9 (Wood)		W10 (Wood)	
	Orientation 1	Orientation 2	Orientation 1	Orientation 2	Orientation 1	Orientation 2	Orientation 1	Orientation 2	Orientation 1	Orientation 2	Orientation 1	Orientation 2	Orientation 1	Orientation 2
0.25	17252	17252	3948	7416	5832	7956	11664	15908	4148	3800	5224	4064	10448	8124
0.50	8626	8626	1974	3708	2916	3978	5832	7954	2074	1900	2612	2032	5224	4062
0.75	5751	5751	1316	2472	1944	2652	3888	5303	1383	1267	1741	1355	3483	2708
1.00	4313	4313	987	1854	1458	1989	2916	3977	1037	950	1306	1016	2612	2031
1.25	3450	3450	790	1483	1166	1591	2333	3182	830	760	1045	813	2090	1625
1.50	2875	2875	658	1236	972	1326	1944	2651	691	633	871	677	1741	1354
2.00	2157	2157	494	927	729	995	1458	1989	519	475	653	508	1306	1016
3.00	1438	1438	329	618	486	663	972	1326	346	317	435	339	871	677

KSCU & KSCC NON-ISOLATED RESTRAINED WEIGHT CAPACITY
PAGE 12 of 12

SECTION – A1.2

RELEASED ON: 04/12/2010



Toll Free (USA Only): 800-959-1229
 International: 614-889-0480
 FAX: 614-889-0540
 World Wide Web: www.kineticsnoise.com
 E-mail: sales@kineticsnoise.com



Member