

ICW 1" DEFLECTION ISOLATION HANGERS

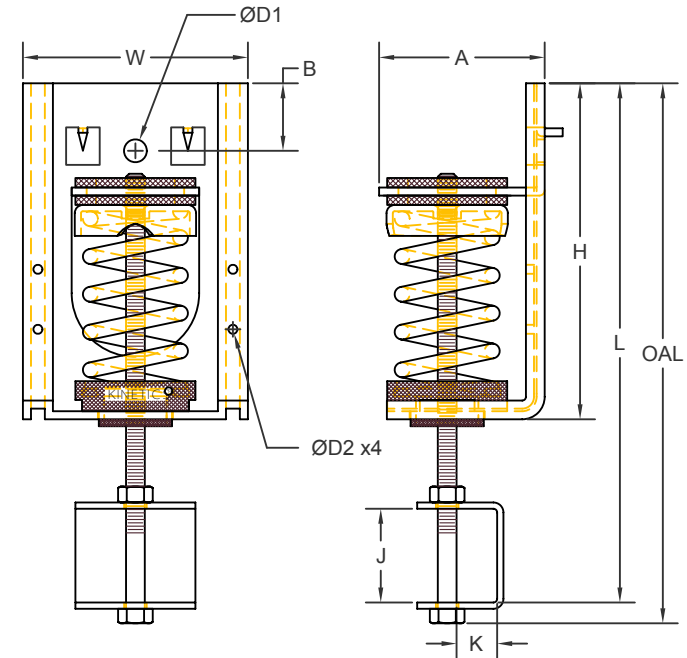
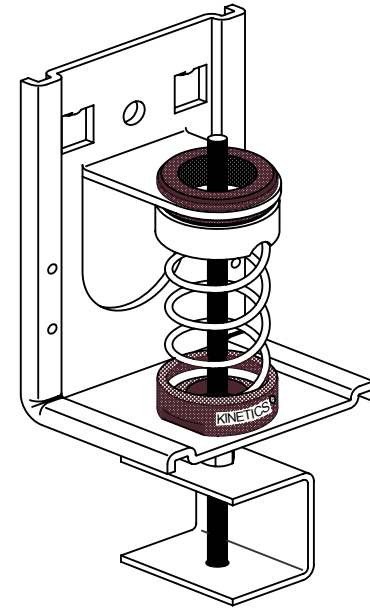
IP UNITS (INCHES AND POUNDS)

TYPE	A	B	D1	D2	H	K	L	OAL	W
24/210	2.63	1.13	0.38	0.16	5.60	0.66	8.65	9.00	3.75

STANDARD RATING

SPRING COIL

TYPE	SIZE	LOAD	DEFL.	COLOR	FREE HT.	O.D.
ICW	24	24.0	1.0	BLUE	3.19	1.75
ICW	37	37.0	1.0	WHITE	3.19	1.75
ICW	50	50.0	1.0	GREEN	3.19	1.75
ICW	75	75.0	1.0	BLACK	3.19	1.75
ICW	100	100.0	1.0	GRAY	3.19	1.75
ICW	150	150.0	1.0	RED	3.19	1.75
ICW	210	210.0	1.0	BROWN	3.19	1.75



SPECIFICATIONS:

- SPRING ELEMENTS ARE POWDER COATED.
- ISOLATOR BRACKETS ARE ELECTRO GALVANIZED.
- ALL HARDWARE IS BRIGHT ZINC PLATED.
- ISOLATION HANGERS HAVE A TYPICAL OVERLOAD OF 50%.
- ISOLATION HANGERS HAVE A MINIMUM Kx/Ky RATIO OF 1.0.
- SPRING ELEMENTS ARE SAFE AT SOLID LOADING.
- HANGER BRACKETS WILL CARRY AT LEAST (5) TIMES OVERLOAD WITHOUT FAILURE.
- HANGER BRACKETS WILL ALLOW 30° ROD MISALIGNMENT WITHOUT SHORT CIRCUITING.
- ISOLATION HANGERS HAVE A NEOPRENE BOTTOM SPRING CUP.



KINETICS NOISE CONTROL, INC
6300 IRELAN PL,
DUBLIN, OH 43017 USA
Ph: 614 889-0480, Fax: 614 889-0540
www.kineticsnoise.com

Model:

ICW-
24/210

By: BB

Date: 09/27/05

Revised: 11/24/14 / BB

Drawing No:

S-03.50-11