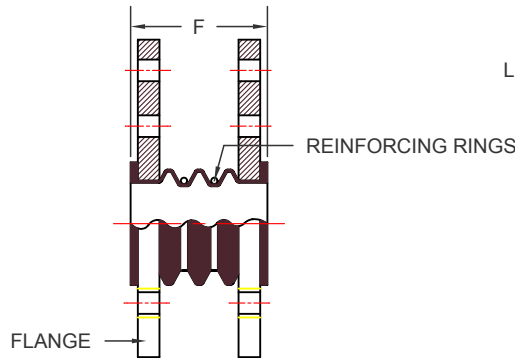
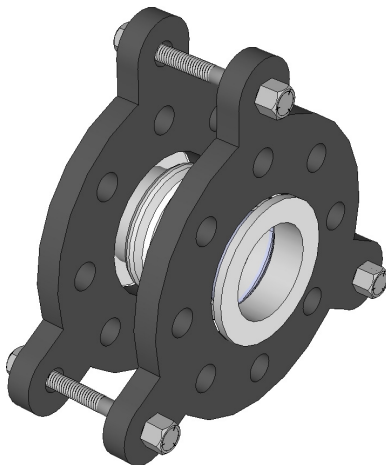
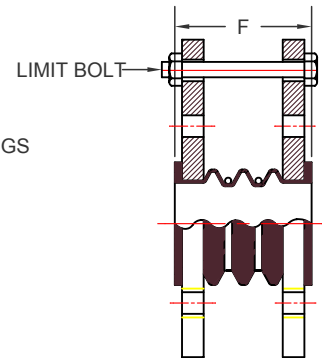


KINFLEX MODEL KMC FLEXIBLE CONNECTOR

KINFLEX KMC, FLEXIBLE CONNECTOR SPECIFICATIONS																	
NOM SIZE	LENGTH-L			AXIAL				DEFLECTION			MAX. PRESSURE			WEIGHT			
				COMPRESSION		ELONGATION		LATERAL	ANGULAR	CONNECTOR				CONTROL RODS			
1.0	(25)	1.75	(44)	0.50	(13)	0.50	(13)	0.25	(6)	45	105	(7.2)	2.0	(0.9)	1.5	(0.7)	
1.25	(32)	1.75	(44)	0.50	(13)	0.50	(13)	0.25	(6)	38	105	(7.2)	2.0	(0.9)	1.5	(0.7)	
1.5	(38)	2.00	(51)	0.50	(13)	0.50	(13)	0.25	(6)	33	105	(7.2)	4.0	(1.8)	1.5	(0.7)	
2.0	(51)	2.75	(70)	0.75	(19)	0.75	(19)	0.38	(10)	26	105	(7.2)	8.0	(3.6)	2.5	(1.1)	
2.5	(64)	3.19	(81)	0.75	(19)	0.75	(19)	0.38	(10)	31	105	(7.2)	11.0	(5.0)	3.5	(1.6)	
3.0	(76)	3.63	(92)	1.00	(25)	1.00	(25)	0.50	(13)	26	105	(7.2)	13.0	(5.9)	4.2	(1.9)	
4.0	(102)	3.63	(92)	1.00	(25)	1.00	(25)	0.50	(13)	26	105	(7.2)	19.0	(8.6)	4.2	(1.9)	
5.0	(127)	4.00	(102)	1.00	(25)	1.00	(25)	0.50	(13)	21	105	(7.2)	25.0	(11.3)	6.0	(2.7)	
6.0	(152)	4.00	(102)	1.13	(29)	1.13	(29)	0.56	(14)	18	105	(7.2)	30.0	(13.6)	7.5	(3.4)	
8.0	(203)	6.00	(152)	1.13	(29)	1.13	(29)	0.56	(14)	15	90	(6.2)	48.0	(21.8)	13.4	(6.1)	
10.0	(254)	5.88	(149)	1.13	(29)	1.13	(29)	0.38	(10)	12	90	(6.2)	80.0	(36.3)	15.0	(6.8)	
12.0	(305)	5.88	(149)	1.19	(30)	1.19	(30)	0.31	(8)	10	55	(3.8)	105.0	(47.6)	21.0	(9.5)	
14.0	(356)	5.88	(149)	1.19	(30)	1.19	(30)	0.25	(6)	8	55	(3.8)	125.0	(56.7)	21.0	(9.5)	
16.0	(406)	5.88	(149)	1.19	(30)	1.19	(30)	0.25	(6)	7	40	(2.8)	155.0	(70.3)	21.0	(9.5)	
18.0	(457)	5.88	(149)	1.19	(30)	1.19	(30)	0.19	(5)	7	40	(2.8)	175.0	(79.4)	22.0	(10.0)	
20.0	(508)	5.88	(149)	1.19	(30)	1.19	(30)	0.19	(5)	6	30	(2.1)	190.0	(86.2)	22.0	(10.0)	
24.0	(610)	7.00	(178)	1.19	(30)	1.19	(30)	0.19	(5)	6	30	(2.1)	275.0	(124.7)	30.0	(13.6)	
										DEG.	PSI	(BAR)	LB	(KG)	LB	(KG)	



KINFLEX KMC



KINFLEX KMC
WITH CONTROL RODS

WARNING: CONTROL UNITS MUST BE USED TO PROTECT THIS PART FROM EXCESSIVE MOVEMENT IF PIPING IS NOT PROPERLY ANCHORED.

ALL DIMENSIONS IN INCHES (MM) EXCEPT AS NOTED.

NEGATIVE PRESSURE RATING FOR ALL SIZES: 26" (660) HG.
 TEMPERATURE FOR RATED PRESSURE: 170 DEG F (77 DEG C).
 MAX ALLOWABLE TEMPERATURE: 450 DEG F (232 DEG C).
 STANDARD FLANGES PER ANSI 125/150#. 250/300#, BS, DIN, JIS, FLANGES ALSO AVAILABLE BUT NOT SHOWN.
 HEAVY DUTY FLANGES REQUIRE USE OF CONTROL RODS.

MATERIALS

FLANGES: MILD STEEL

BODY: TEFLON (STANDARD)

APPLICABLE FLUIDS FOR STANDARD BODY: WATER, HOT WATER, SEAWATER, WEAK ACIDS, COMPRESSED AIR, ETC.



By: BB
 Date: 07/14/14
 Revised: /

Drawing No:
 S-05.05-01E