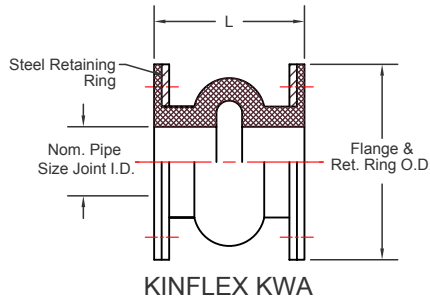
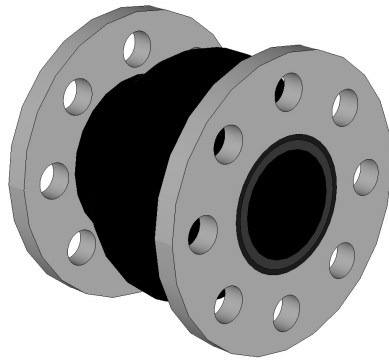


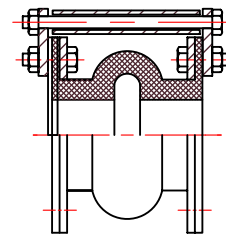
# KINFLEX MODEL KWA FLEXIBLE CONNECTOR

## KINFLEX KWA, FLEXIBLE CONNECTOR SPECIFICATIONS

| NOM SIZE | LENGTH-L |      | AXIAL       |      |            |      | TRANSVERSE MOVEMENT | ANGULAR DEFLECTION | MAX. PRESSURE |   | WEIGHT      |            |              |           |             |           |             |
|----------|----------|------|-------------|------|------------|------|---------------------|--------------------|---------------|---|-------------|------------|--------------|-----------|-------------|-----------|-------------|
|          |          |      | COMPRESSION |      | ELONGATION |      |                     |                    |               |   | CONNECTOR   |            | CONTROL RODS |           |             |           |             |
| 1.0      | (25)     | 6.0  | (152)       | 0.44 | (11)       | 0.22 | (6)                 | 0.51               | (13)          | 3 | 220         | (15.2)     | 1.5          | (0.7)     | 3.3         | (1.5)     |             |
| 1.25     | (32)     | 6.0  | (152)       | 0.44 | (11)       | 0.22 | (6)                 | 0.51               | (13)          | 3 | 200         | (13.8)     | 1.8          | (0.8)     | 3.3         | (1.5)     |             |
| 1.5      | (38)     | 6.0  | (152)       | 0.44 | (11)       | 0.22 | (6)                 | 0.51               | (13)          | 3 | 180         | (12.4)     | 2.4          | (1.1)     | 4.4         | (2.0)     |             |
| 2.0      | (51)     | 6.0  | (152)       | 0.44 | (11)       | 0.22 | (6)                 | 0.51               | (13)          | 3 | 170         | (11.7)     | 2.9          | (1.3)     | 6.4         | (2.9)     |             |
| 2.5      | (64)     | 6.0  | (152)       | 0.44 | (11)       | 0.22 | (6)                 | 0.51               | (13)          | 3 | 170         | (11.7)     | 4.1          | (1.9)     | 7.4         | (3.4)     |             |
| 3.0      | (76)     | 6.0  | (152)       | 0.44 | (11)       | 0.22 | (6)                 | 0.51               | (13)          | 3 | 170         | (11.7)     | 4.6          | (2.1)     | 8.1         | (3.7)     |             |
| 3.5      | (89)     | 6.0  | (152)       | 0.55 | (14)       | 0.27 | (7)                 | 0.51               | (13)          | 3 | 170         | (11.7)     | 6.5          | (2.9)     | 7.1         | (3.2)     |             |
| 4.0      | (102)    | 6.0  | (152)       | 0.55 | (14)       | 0.27 | (7)                 | 0.51               | (13)          | 3 | 170         | (11.7)     | 6.5          | (2.9)     | 7.1         | (3.2)     |             |
| 5.0      | (127)    | 6.0  | (152)       | 0.55 | (14)       | 0.27 | (7)                 | 0.51               | (13)          | 3 | 160         | (11.0)     | 7.9          | (3.6)     | 7.9         | (3.6)     |             |
| 6.0      | (152)    | 6.0  | (152)       | 0.72 | (18)       | 0.36 | (9)                 | 0.51               | (13)          | 3 | 150         | (10.3)     | 9.2          | (4.2)     | 10.0        | (4.5)     |             |
| 8.0      | (203)    | 8.0  | (203)       | 0.72 | (18)       | 0.36 | (9)                 | 0.51               | (13)          | 3 | 150         | (10.3)     | 17.2         | (7.8)     | 12.8        | (5.8)     |             |
| 10.0     | (254)    | 8.0  | (203)       | 0.72 | (18)       | 0.36 | (9)                 | 0.51               | (13)          | 3 | 150         | (10.3)     | 21.8         | (9.9)     | 20.8        | (9.4)     |             |
| 12.0     | (305)    | 8.0  | (203)       | 0.72 | (18)       | 0.36 | (9)                 | 0.51               | (13)          | 3 | 150         | (10.3)     | 31.7         | (14.4)    | 27.3        | (12.4)    |             |
| 14.0     | (356)    | 8.0  | (203)       | 0.72 | (18)       | 0.36 | (9)                 | 0.51               | (13)          | 2 | 140         | (9.7)      | 36.8         | (16.7)    | 27.8        | (12.6)    |             |
| 16.0     | (406)    | 8.0  | (203)       | 0.82 | (21)       | 0.49 | (12)                | 0.51               | (13)          | 2 | 120         | (8.3)      | 41.4         | (18.8)    | 26.5        | (12.0)    |             |
| 18.0     | (457)    | 8.0  | (203)       | 0.82 | (21)       | 0.49 | (12)                | 0.51               | (13)          | 2 | 110         | (7.6)      | 45.9         | (20.8)    | 30.9        | (14.0)    |             |
| 20.0     | (508)    | 8.0  | (203)       | 0.82 | (21)       | 0.49 | (12)                | 0.51               | (13)          | 1 | 110         | (7.6)      | 62.9         | (28.5)    | 29.5        | (13.4)    |             |
| 22.0     | (559)    | 10.0 | (254)       | 0.82 | (21)       | 0.49 | (12)                | 0.51               | (13)          | 1 | 100         | (6.9)      | 60.8         | (27.6)    | 31.0        | (14.1)    |             |
| 24.0     | (610)    | 10.0 | (254)       | 0.82 | (21)       | 0.49 | (12)                | 0.51               | (13)          | 1 | 100         | (6.9)      | 82.0         | (37.2)    | 34.5        | (15.6)    |             |
| 26.0     | (660)    | 10.0 | (254)       | 0.95 | (24)       | 0.56 | (14)                | 0.51               | (13)          | 1 | 70          | (4.8)      | 97.0         | (44.0)    | 45.0        | (20.4)    |             |
| 28.0     | (711)    | 10.0 | (254)       | 0.95 | (24)       | 0.56 | (14)                | 0.51               | (13)          | 1 | 70          | (4.8)      | 100.0        | (45.4)    | 45.0        | (20.4)    |             |
| 30.0     | (762)    | 10.0 | (254)       | 0.95 | (24)       | 0.56 | (14)                | 0.51               | (13)          | 1 | 70          | (4.8)      | 121.0        | (54.9)    | 57.0        | (25.9)    |             |
| 36.0     | (914)    | 10.0 | (254)       | 0.95 | (24)       | 0.56 | (14)                | 0.51               | (13)          | 1 | 60          | (4.1)      | 178.0        | (80.7)    | 76.0        | (34.5)    |             |
|          |          |      |             |      |            |      |                     |                    |               |   | <b>DEG.</b> | <b>PSI</b> | <b>(BAR)</b> | <b>LB</b> | <b>(KG)</b> | <b>LB</b> | <b>(KG)</b> |



KINFLEX KWA



KINFLEX KWA  
WITH CONTROL RODS

**WARNING:** CONTROL UNITS MUST BE USED TO PROTECT THIS PART FROM EXCESSIVE MOVEMENT IF PIPING IS NOT PROPERLY ANCHORED.

ALL DIMENSIONS IN INCHES (MM) EXCEPT AS NOTED.

NEGATIVE PRESSURE RATING FOR ALL SIZES: 26" (660) HG.  
 TEMPERATURE FOR RATED PRESSURE: 170 DEG F (77 DEG C).  
 MAX ALLOWABLE TEMPERATURE: 225 DEG F (107 DEG C).  
 STANDARD FLANGES PER ANSI 125/150# 250/300#, BS, DIN, JIS, FLANGES ALSO AVAILABLE BUT NOT SHOWN.  
 HEAVY DUTY FLANGES REQUIRE USE OF CONTROL RODS.

**MATERIALS**

FLANGES: MILD STEEL  
 WIRE CORD (COLLAR): HARDENED STEEL WIRE.  
 BODY: NEOPRENE (STANDARD)  
 BODY CORD: NYLON TIRE CORD  
 OPTIONAL BODY MATERIALS AVAILABLE [EPDM, BUTYL, HYPALON, & NITRILE].

APPLICABLE FLUIDS FOR STANDARD BODY: WATER, WARM WATER, SEAWATER, WEAK ACIDS, ALKALIES, COMPRESSED AIR, ETC.



By: BB  
 Date: 07/14/14  
 Revised: /

Drawing No:  
 S-05.05-01F