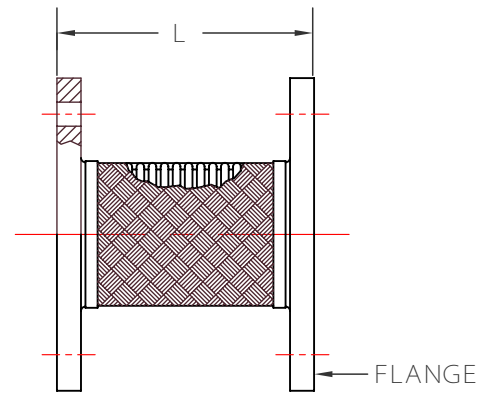
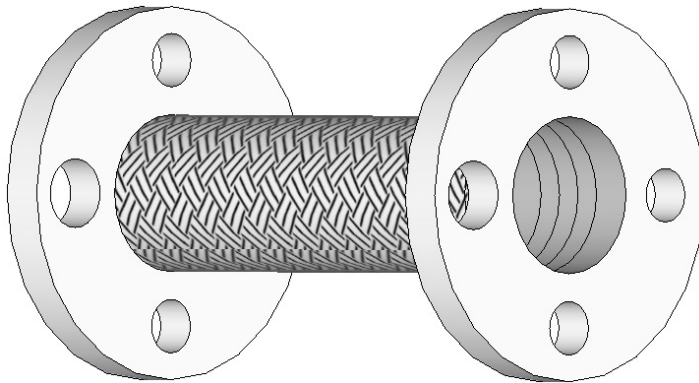


KINFLEX MODEL BFMC-FFF FLEXIBLE CONNECTOR

KINFLEX BFMC-FFF, FLEXIBLE CONNECTOR SPECIFICATIONS															
NOM SIZE		LENGTH-L		PIPE FLANGE		LATERAL OFFSET				WORKING PRESSURE				APPROX. SHIP. WEIGHT	
						INTERMITTENT		PERMANENT		@70° F		@300° F			
2.0	(51)	9.00	(229)	0.69	(17)	0.13	(3)	0.38	(10)	455	(31.4)	400	(27.6)	9.0	(4.1)
2.5	(64)	9.00	(229)	0.75	(19)	0.13	(3)	0.38	(10)	345	(23.8)	303	(20.9)	13.0	(5.9)
3.0	(76)	9.00	(229)	0.88	(22)	0.13	(3)	0.38	(10)	289	(19.9)	254	(17.5)	14.0	(6.4)
4.0	(102)	9.00	(229)	0.88	(22)	0.13	(3)	0.38	(10)	300	(20.7)	264	(18.2)	18.0	(8.2)
5.0	(127)	11.00	(279)	0.88	(22)	0.13	(3)	0.38	(10)	220	(15.2)	193	(13.3)	25.0	(11.3)
6.0	(152)	11.00	(279)	1.00	(25)	0.13	(3)	0.38	(10)	200	(13.8)	176	(12.1)	28.0	(12.7)
8.0	(203)	12.00	(305)	1.06	(27)	0.13	(3)	0.38	(10)	190	(13.1)	167	(11.5)	52.0	(23.6)
10.0	(254)	13.00	(330)	1.06	(27)	0.13	(3)	0.38	(10)	165	(11.4)	145	(10.0)	65.0	(29.5)
12.0	(305)	14.00	(356)	1.13	(29)	0.13	(3)	0.38	(10)	125	(8.6)	110	(7.6)	105.0	(47.6)
14.0	(356)	14.00	(356)	1.13	(29)	0.13	(3)	0.38	(10)	105	(7.2)	92	(6.3)	115.0	(52.2)
										PSI	(BAR)	PSI	(BAR)	LB	(KG)



KINFLEX BFMC-FFF

WARNING: CONTROL UNITS MUST BE USED TO PROTECT THIS PART FROM EXCESSIVE MOVEMENT IF PIPING IS NOT PROPERLY ANCHORED.

ALL DIMENSIONS IN INCHES (MM) EXCEPT AS NOTED.

ALL FLANGES RATED AT 150 #

MATERIALS

PIPE ENDS: CARBON STEEL
 CORRUGATED HOSE: 321 STAINLESS STEEL
 WITH 304 STAINLESS BRAIDED SHEATH



By:	BB
Date:	07/14/14
Revised:	/

Drawing No:
S-05.05-01G