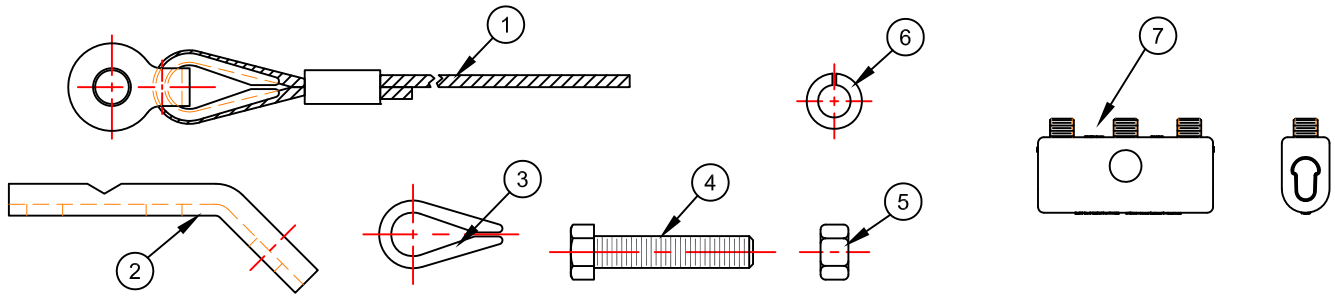


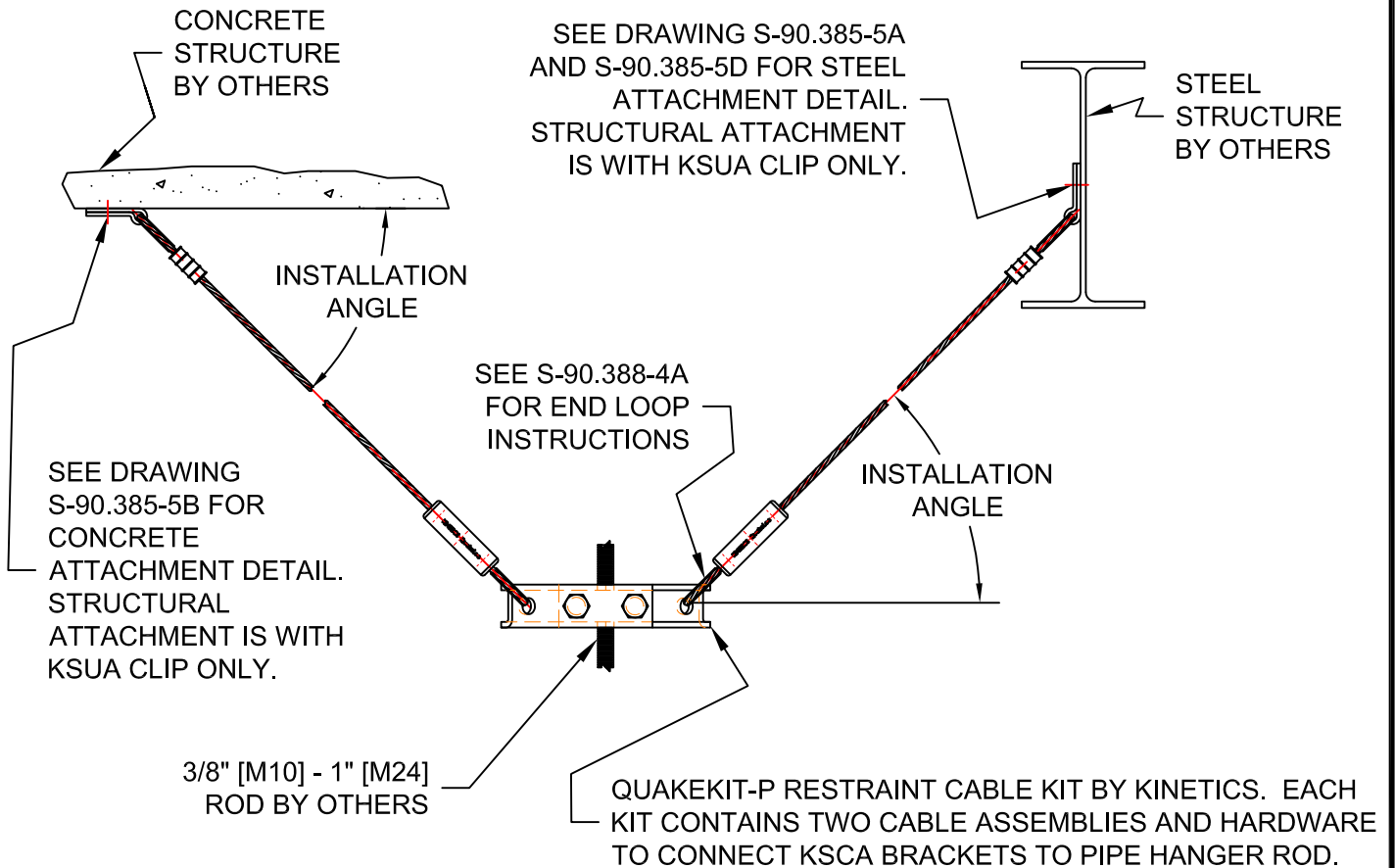
# QUAKEKIT-P CABLE RESTRAINT



MK	QTY	DESCRIPTION
1	2	CABLE WITH SWAGED END LOOP
2	2	KSCA CABLE ATTACHMENT BRACKET
3	2	WIRE ROPE THIMBLE
4	2	0.50 N.C. X 2.50 HEX BOLT

MK	QTY	DESCRIPTION
5	2	0.50 N.C. HEX NUT
6	2	0.50 LOCK WASHER
7	2	QUAKELOC

**NOTE:**  
FOR CABLE RESTRAINT CAPACITIES SEE DWGS  
S-90.405-2A - D.



FOR WOODEN STRUCTURES, SEE DRAWING S-90.385-5C FOR LAG SCREW ATTACHMENT DETAIL.

THIS COMPONENT IS SUITABLE FOR SEIMIC APPLICATIONS SUBJECT TO THE QUALIFICATIONS INDICATED ON THIS DRAWING.



LAST DATE  
REVISED  
09/16/11

DRAWN BY  
DCB

DRAWING NO.  
S-90.405-1A

S-90