

0.38 MAX.

0.25 MAX.

L3

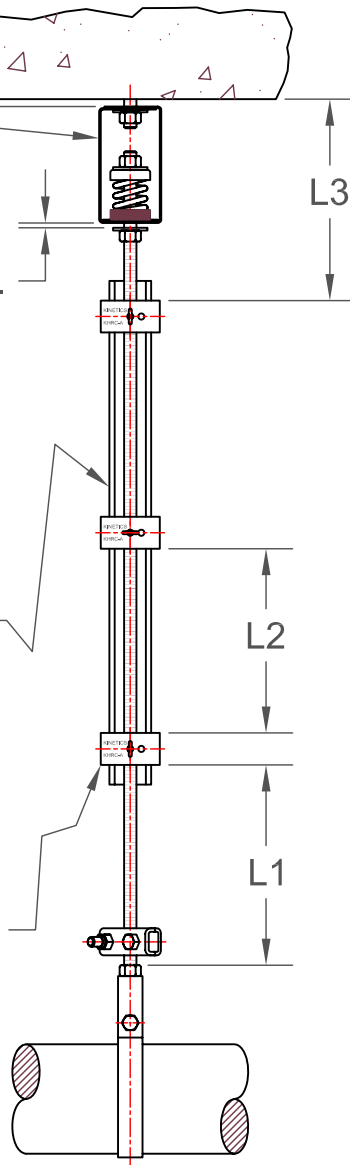
ISOLATION BY KINETICS

STIFFENER ANGLE BY OTHERS. SIZE RECOMMENDED ON TABLE 4b OF KINETICS "SITE SPECIFIC FORCE CLASS TABLES".

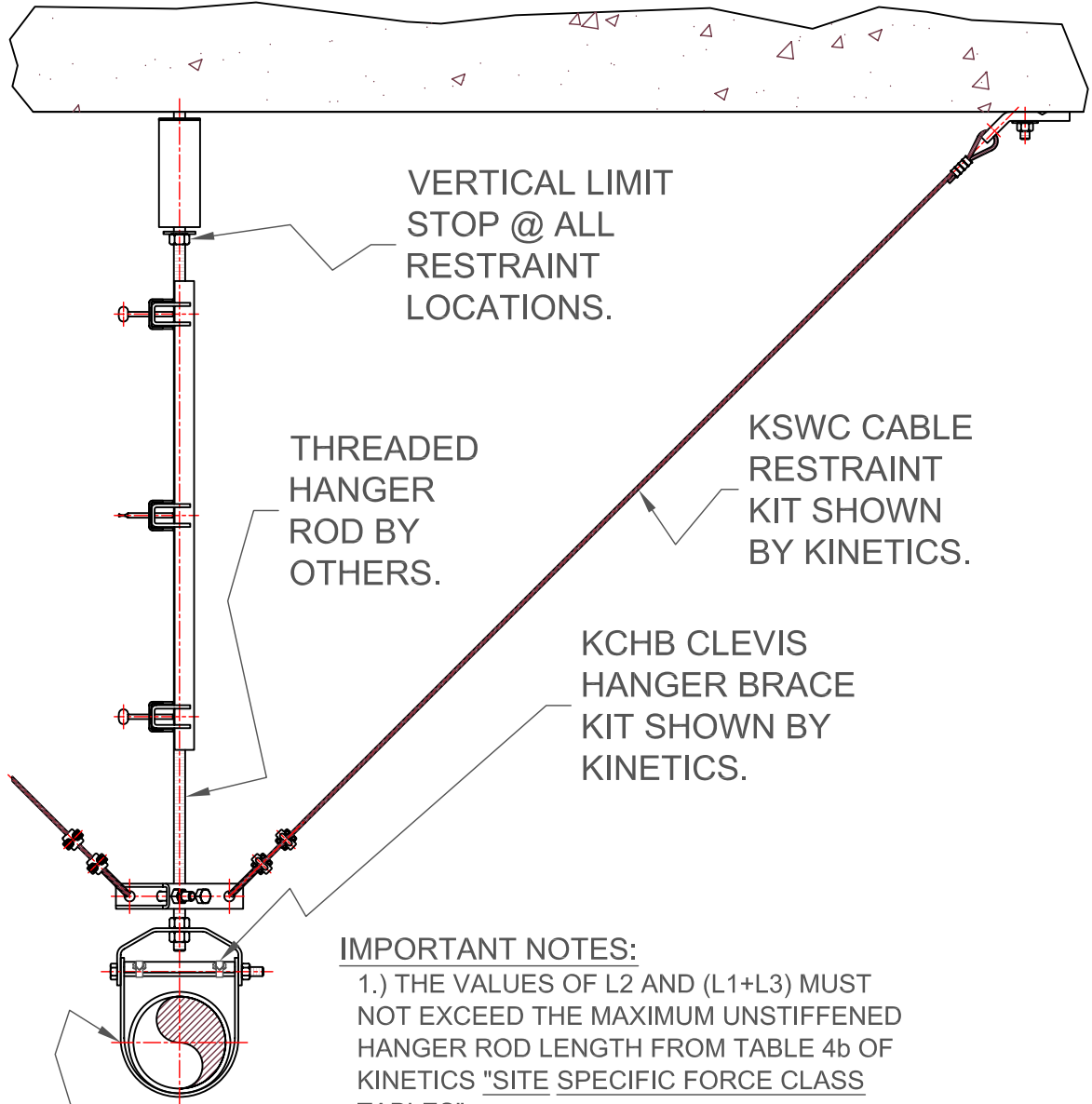
L2

KHRC-A ADJUSTABLE ANGLE STIFFENER KIT BY KINETICS.

L1



CLEVIS HANGER BY OTHERS.



VERTICAL LIMIT STOP @ ALL RESTRAINT LOCATIONS.

THREADED HANGER ROD BY OTHERS.

KSWC CABLE RESTRAINT KIT SHOWN BY KINETICS.

KCHB CLEVIS HANGER BRACE KIT SHOWN BY KINETICS.

**IMPORTANT NOTES:**

- 1.) THE VALUES OF L2 AND (L1+L3) MUST NOT EXCEED THE MAXIMUM UNSTIFFENED HANGER ROD LENGTH FROM TABLE 4b OF KINETICS "SITE SPECIFIC FORCE CLASS TABLES".
- 2.) A MINIMUM OF TWO (2) KHRC-A'S ARE REQUIRED PER HANGER ROD INSTALLATION.

THIS COMPONENT IS SUITABLE FOR SEISMIC APPLICATIONS SUBJECT TO THE QUALIFICATIONS INDICATED ON THIS DRAWING



TITLE  
 KHRC-A INSTALLATION  
 ISOLATED HANGER

DATE  
 02/03/04

REVISED BY  
 TEF

DRAWING NO.  
 S-90.500-1C