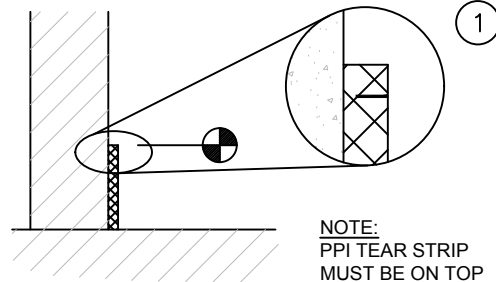


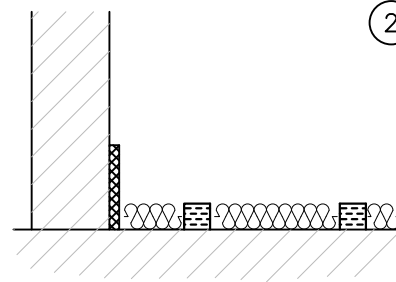
STRUCTURAL NOTE:

STRUCTURAL SLAB F- NUMBERS
FF -FLOOR FLATNESS NUMBER
SPECIFIED OVERALL VALUE = 38
MINIMUM LOCAL VALUE = 25

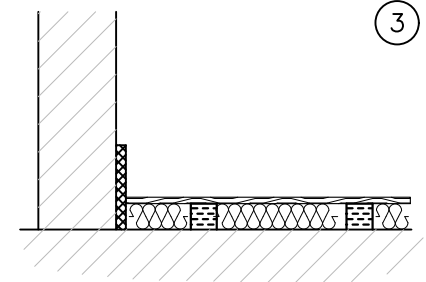


STRIKE FLOATING SLAB GRADE AND ADHERE PPI TO CONCRETE POURING FORM.

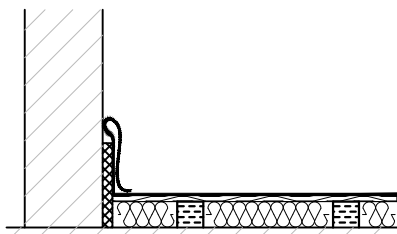
NOTE:
PPI TEAR STRIP MUST BE ON TOP WITH TEAR SLOT FACING TOWARDS FLOOR TO BE POURED.



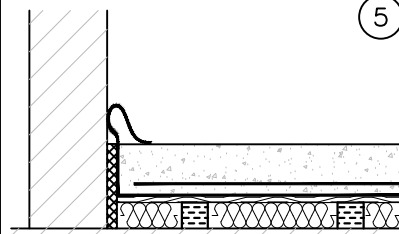
ROLL OUT THE RIM, CUTTING THE LOW DENSITY FIBERGLASS TO THE REQUIRED LENGTH, ALSO CUTTING TO MATCH ROOM CONTOUR.



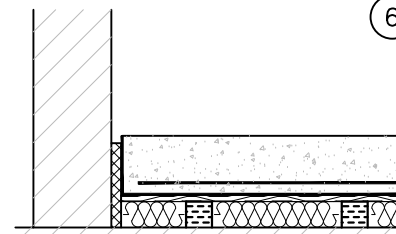
LAY PLYWOOD ON TOP OF RIM MATERIAL STAGGERING JOINTS 2'-0". SECURE TOGETHER USING JUNCTION PLATES AS DETAILED.



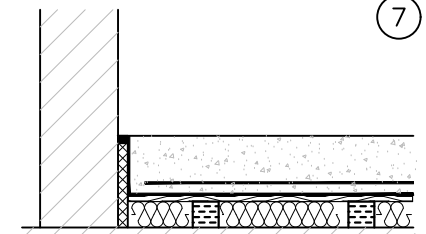
COVER FLOOR WITH 2 LAYERS OF 6 MIL POLY SHEETING OVERLAPPING SEAMS A MIN. OF 6". EXTEND POLY UP AND STAPLE TO WALL OR ROLL BACK ONTO PLYWOOD AND STAPLE. ENSURE ALL SEAMS ARE TAPED TO PREVENT CONCRETE FROM LEAKING THROUGH.



PLACE REINFORCEMENT AND POUR FLOATING SLAB PER PROJECT DESIGN AND SPECIFICATIONS.



AFTER CONCRETE HAS CURED, GC TO REMOVE PPI TEAR STRIP AND EXCESS POLY SHEETING AT SLAB PERIMETER.



GC TO CAULK SLAB PERIMETER USING SEALANT PER SEALANT MANUFACTURER'S INSTRUCTIONS.

DIMENSION FORMAT: IN [mm]

SCALE: N.T.S.



RIM ISOLATED SLAB:
INSTALLATION SEQUENCE

Revised
9/1/2017

Drawing No.
AA001967

kineticsnoise.com/rim