

KINETICS® KINFLEX™ DUCT

FLEXIBLE DUCTWORK CONNECTIONS

Description

Kinetics KINFLEX Duct flexible ductwork connections allow movement while preventing additional stresses on equipment and duct systems. KINFLEX Duct features fully welded match drilled carbon steel flanges equipped with backing bars fastened in place with zinc plated hardware, flow liner (if supplied), and EPDM flex membrane material. Acoustically rated design is available with an absorptive acoustic fill and EPDM outer barrier.

Application

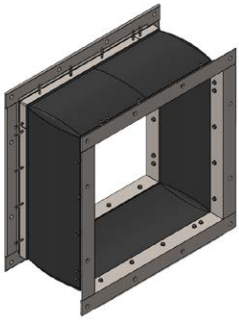
Fan Inlets & Outlets
Pressure Blower Inlets & Outlets
Baghouse Inlets & Outlets
Scrubber Inlets & Outlets
Dryer Outlets
Stack Inlets
Gas Turbine Intake Systems
Ventilation and Process Ductwork

EPDM — UV Resistant

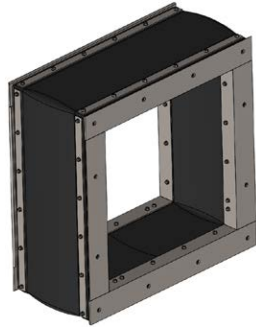
1/8" thick layered EPDM flex membrane with internal nylon scrim for superior tear strength. Resistant to ozone and UV exposure and cold cracking makes it ideal for outdoor use.

NO FLOW LINER

Good for airstream flows up to 6,000 FPM and pressure from -30" WG to +120" WG.



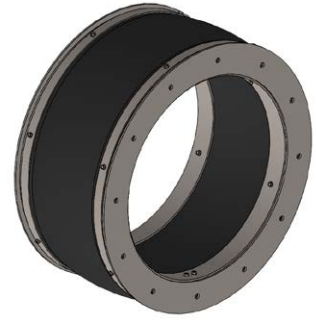
Rectangular
EPDM



Rectangular Acoustic
EPDM



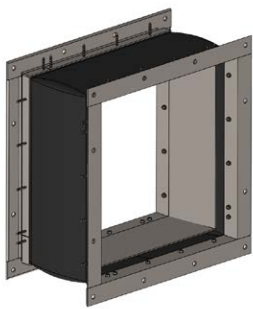
Circular
EPDM



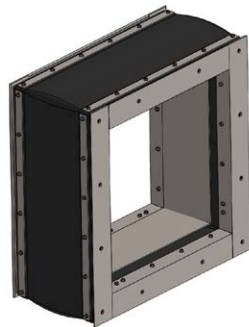
Circular Acoustic
EPDM

FLOW LINER

Same construction with an aerodynamic protective metal flow liner. Good for airstream flows over 6,000 FPM and pressure from -120" WG to +120" WG.



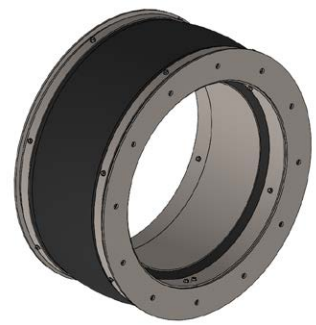
Rectangular
EPDM



Rectangular Acoustic
EPDM



Circular
EPDM



Circular Acoustic
EPDM

Flange-to-flange length

8" for flanges less than 4"
10" or 12" for flanges 4" and larger

Lateral and axial movement

+/- 0.5"

Unit weight

Standard Flex: Up to 700 lbs (standard sizes)
Acoustic Flex: Up to 1,000 lbs (standard sizes)

Operating temperatures

EPDM: Up to 225° F

Materials

- Carbon steel flanges, backing bars and flow liner (if supplied), zinc plated hardware EPDM flex membrane material.
- Stainless steel flanges, backing bars, flow liners and hardware available (carriage bolts)
- Galvanized construction also available.
- Stainless steel flexes will take SS carriage bolts instead of TEK screws.

Paint finishes

Alkyd, enamel, high heat, inorganic zinc, epoxy and polyurethane.



kineticsnoise.com
sales@kineticsnoise.com
1-800-959-1229