



## **KINETICS® KSIP**

### **SUSPENDED INLINE PUMP SUPPORT**

---

Kinetics KSIP Suspended Inline Pump Support provides a bracket for suspended vertical inline pumps without the need for intermediate support, delivering significant labor savings for contractors in the field and ease of installation.

#### **FEATURES**

- Standard configurations based on inline pump flange sizes
- One-piece design for ease of installation with no additional materials required in the field
- Rod support built into the bracket
- Flexible Installation: KSIP can be mounted to the inside or outside of the flange.

#### **APPLICATION**

Kinetics KSIP Suspended Inline Pump Support brackets are engineered to carry the weight of a suspended inline pump.

#### **DESCRIPTION**

Kinetics inline pump supports are fabricated from structural steel members that can be suspended to the building structure via threaded rod. Kinetics KSIP features a rigid steel member that maintains the proper height and alignment during install of the piping and inline pump. Suspended Inline Pump Supports are available in configurations to support pump sizes from 1-1/2" to 8."

#### **SPECIFICATION**

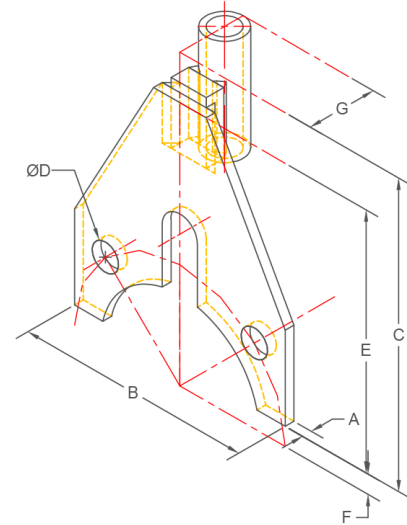
Kinetics Model KSIP Suspended Inline Pump Supports are fabricated from ductile steel components, welded together to provide the support of an inline pump. Supports shall be Model KSIP, as manufactured by Kinetics Noise Control, Inc.

## "A" SIZE PUMP SUPPORTS

PIPE SIZE	A	B	C	D	E	F	G	RATED LOAD
1-1/2	0.25	5.00	6.88	0.63	5.38	0.50	1.80	3500.0
2	0.25	5.00	6.88	0.75	5.38	0.50	1.80	3500.0
2-1/2	0.25	6.00	7.88	0.75	6.38	0.50	1.80	3500.0
3	0.25	6.00	7.75	0.75	6.50	0.50	1.80	3500.0

## "C" SIZE PUMP SUPPORTS

PIPE SIZE	A	B	C	D	E	F	G	RATED LOAD
4	0.25	8.75	8.63	0.75	7.38	0.50	2.07	5000.0
5	0.25	10.00	9.75	0.88	8.50	0.50	2.07	5000.0
6	0.25	10.75	10.00	0.88	8.75	0.50	2.07	5000.0
8	0.38	12.50	11.25	0.88	10.00	0.50	2.07	5000.0



## NOTES FOR BOTH "A" AND "C" SIZE PUMP HANGERS

- PUMP HANGERS ARE USED IN PAIRS
- HANGERS ARE PAINTED KINETICS STANDARD COLOR
- HANGER RODS AND CONNECTION HARDWARE IS BY OTHERS
- PUMP MUST BE RIGIDLY CONNECTED TO PIPING



[kineticsnoise.com/ksip](http://kineticsnoise.com/ksip)  
[sales@kineticsnoise.com](mailto:sales@kineticsnoise.com)  
 1-800-959-1229