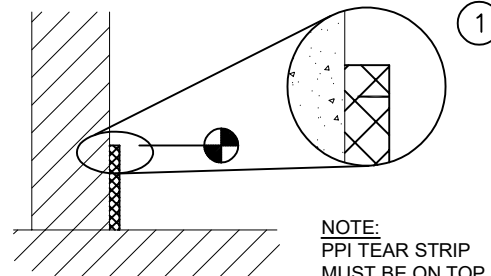


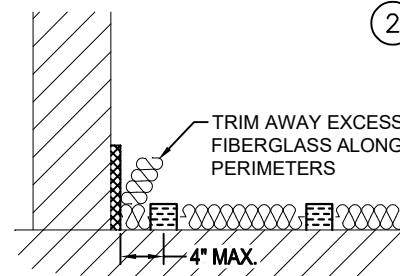
STRUCTURAL NOTE:

STRUCTURAL SLAB F- NUMBERS
FF -FLOOR FLATNESS NUMBER
SPECIFIED OVERALL VALUE = 38
MINIMUM LOCAL VALUE = 25

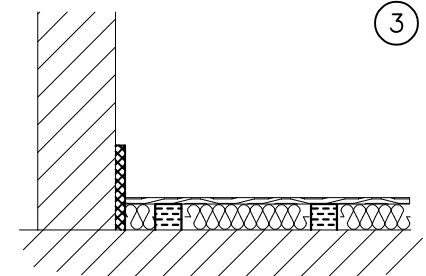


STRIKE FLOATING SLAB GRADE AND ADHERE RESILIENT INTERFACE (PPI BY KNC) TO PENETRATIONS AND PERIMETER LOCATIONS.

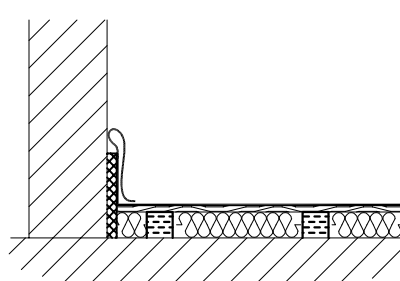
NOTE:
PPI TEAR STRIP MUST BE ON TOP WITH TEAR SLOT FACING TOWARDS FLOOR TO BE POURED.



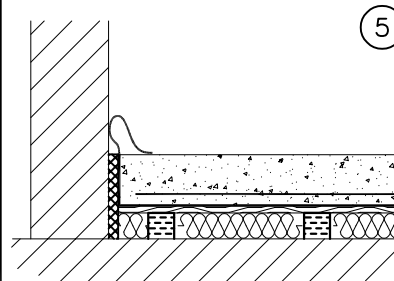
ROLL OUT THE RIM SO THE CENTERLINE OF THE FIRST ROW OF ISOLATORS IS A MAXIMUM OF 4" FROM EDGE OF RESILIENT INTERFACE (PPI BY KNC). CUT RIM TO MATCH ROOM CONTOUR. OBSERVE 4" MAX. OFFSET FROM PPI AT ALL TIMES.



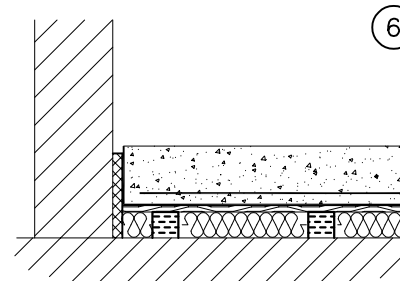
LAY PLYWOOD ON TOP OF RIM MATERIAL STAGGERING JOINTS 2'-0". SECURE TOGETHER USING JUNCTION PLATES AS DETAILED.



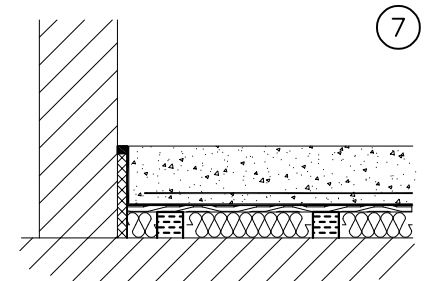
COVER FLOOR WITH 2 LAYERS OF 6 MIL POLY SHEETING OVERLAPPING SEAMS A MIN. OF 6". EXTEND POLY UP AND STAPLE TO WALL OR ROLL BACK ONTO PLYWOOD AND STAPLE. ENSURE ALL SEAMS ARE TAPED TO PREVENT CONCRETE FROM LEAKING THROUGH.



PLACE REINFORCEMENT AND POUR ISOLATED SLAB PER PROJECT DESIGN AND SPECIFICATIONS.



AFTER CONCRETE HAS CURED, GC TO REMOVE PPI TEAR STRIP AND EXCESS POLY SHEETING AT SLAB PERIMETER.



GC TO CAULK SLAB PERIMETER USING SEALANT PER SEALANT MANUFACTURER'S INSTRUCTIONS.

DIMENSION FORMAT: IN [mm]

SCALE: N.T.S.



RIM ISOLATED SLAB:
INSTALLATION SEQUENCE

Revised
08/31/2020

Drawing No.
AA001967

kineticsnoise.com/rim/concrete