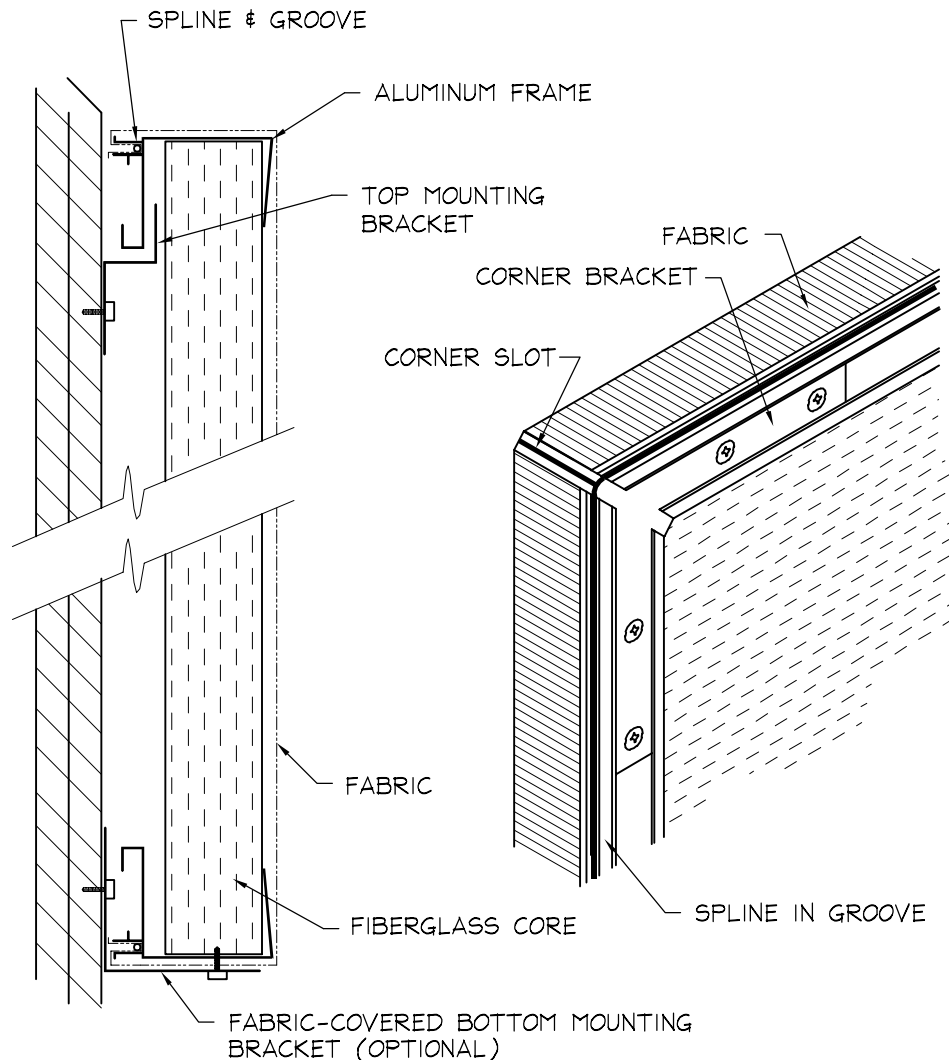


## INSTALLATION INSTRUCTIONS APPLIQUE ACOUSTICAL WALL PANEL



KINETICS ACOUSTICAL WALL PANELS ARE EASILY MOUNTED USING CONCEALED BRACKETS. PANELS CAN BE INSTALLED QUICKLY ONTO VIRTUALLY ANY WALL SURFACE, FOR A LEVEL, SECURE INSTALLATION. FOLLOW THESE GUIDELINES:

1. BEFORE INSTALLATION, CHECK WALLS FOR OBSTRUCTIONS SUCH AS ELECTRICAL OUTLETS, THERMOSTATS, AND SWITCHES. IF POSSIBLE, PANELS SHOULD BE MOUNTED TO AVOID THESE OBSTRUCTIONS.
2. INSTALL TOP MOUNTING BRACKET  
MEASURE 2 1/4" DOWN FROM DESIRED TOP OF PANEL (IF PANELS BUTT INTO CEILING, MAKE SURE TO ALLOW AN ADDITIONAL 3/4" AT TOP OF PANEL FOR ROOM TO SLIDE PANEL ONTO TOP BRACKET). DO NOT POSITION WALL CLIPS CLOSER THAN 3" FROM THE LEFT OR RIGHT VERTICAL EDGE OF PANEL. FASTEN CLIPS TO WALL.
3. INSTALL BOTTOM MOUNTING BRACKET  
HANG PANEL FROM TOP CLIPS AT DESIRED FINAL LOCATION. MAKE SMALL MARK ON WALL UNDER BOTTOM EDGE AND REMOVE PANEL. FASTEN BOTTOM MOUNTING BRACKET TO WALL MAKING SURE ONE LEG OF ANGLE WILL BE BEHIND PANEL WHEN REHUNG.
4. HANG PANEL  
SLIDE PANEL DOWN ONTO TOP BRACKETS. DRIVE SCREWS THROUGH FABRIC-COVERED FLANGE OF BOTTOM BRACKET INTO PANEL FRAME TO LOCK PANEL INTO POSITION.