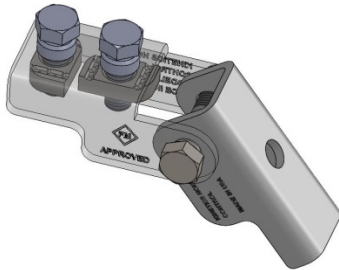
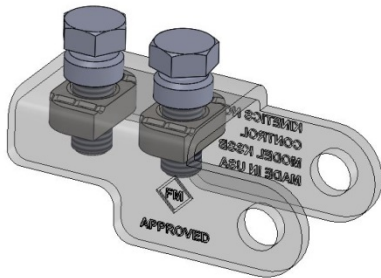


KSSB Assembly Installation Instructions.

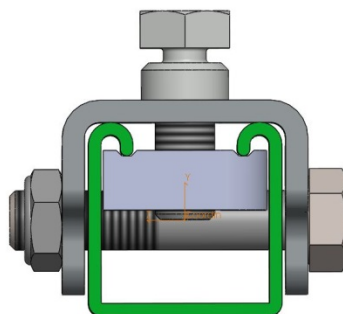
1. Unfold bracket assembly



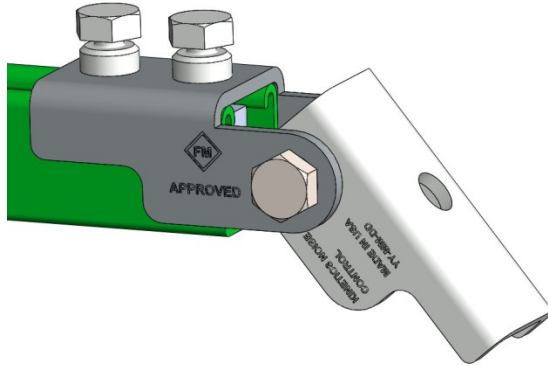
2. Loosen the tork bolts to free channel nuts, however, do not remove channel nuts from tork bolts



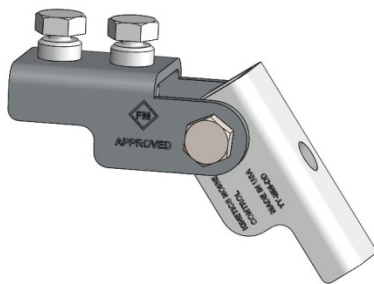
3. Align channel nut grooves with inside lip of strut channel.



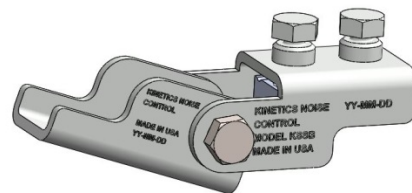
- Slide strut saddle over strut so that the top edge of the strut saddle is even with the end of the strut.



- Tighten the tork bolts to secure the channels nuts to the strut. Make sure the grooves in the channel nuts engage the lips of the strut.
- If necessary, the pivot bolt may be removed, so that the anchor bracket can be inverted for mounting. Re-assemble the anchor bracket to the strut saddle by reinstalling the pivot bolt, and attaching the nut so that at least one thread of the pivot bolt extends beyond the nut.



Anchor down (as shipped)



Alternative Anchor up

- Install strut brace with sway brace assembly into mounting position.
- Using a 3/4 wrench or socket, tighten the top bolt hex. Alternate bolts to tighten evenly until the hex breaks away for both bolts.