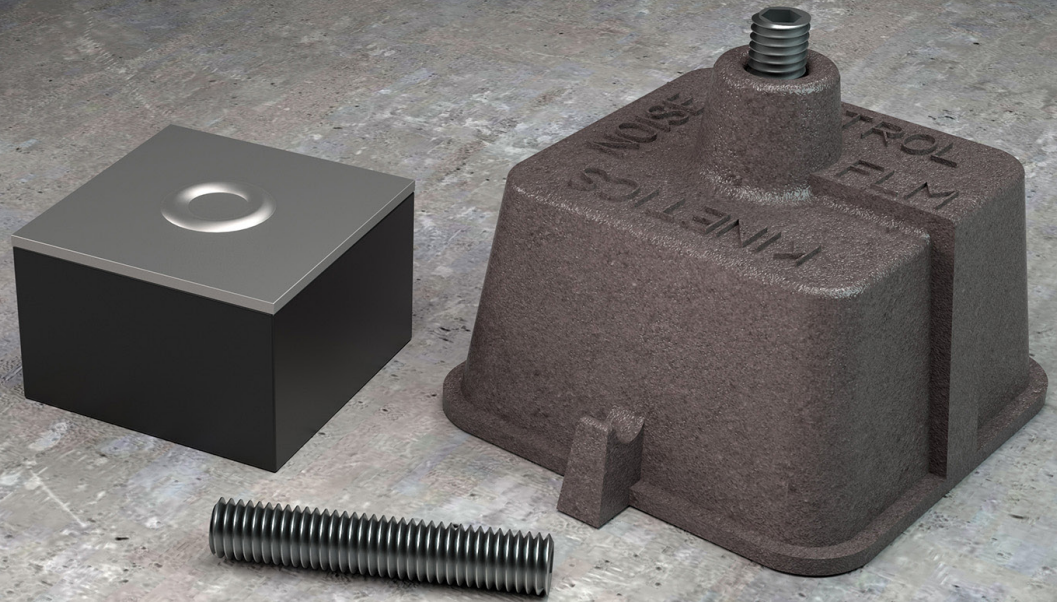


# FLM

## Lift Slab Floor Mount



Lifted isolation mounts decouple concrete slabs from non-isolated structural floors.

The FLM system offers flexibility when the construction sequence demands movement of exceedingly heavy loads across a yet-to-be “jacked-up” slab. Otherwise, consider RIM or FIC which allow for faster construction by eliminating FLM’s lift sequence.

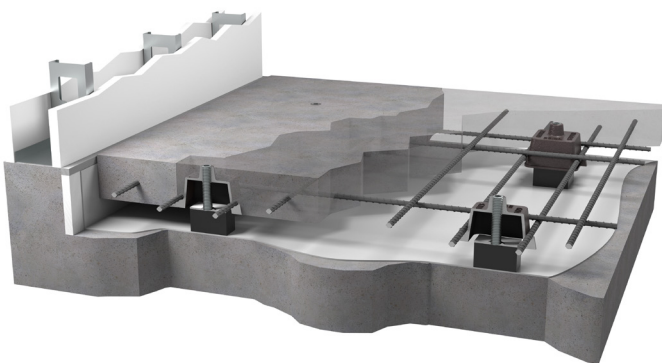
Factory-engineered shop drawings detail spacing, spring load/deflections, and structural floor flatness requirements.

### FLM COMPONENTS

- Cast iron housing
- Leveling screw
- Resilient decoupler with load plate

### FLM FEATURES

- Various load capacities offered in either fiberglass or neoprene isolators
- Easy to adapt for wide range of airspaces
- 4" thick slabs standard
- Adapters available for thicker concrete slabs



kineticsnoise.com  
sales@kineticsnoise.com  
1-800-959-1229