

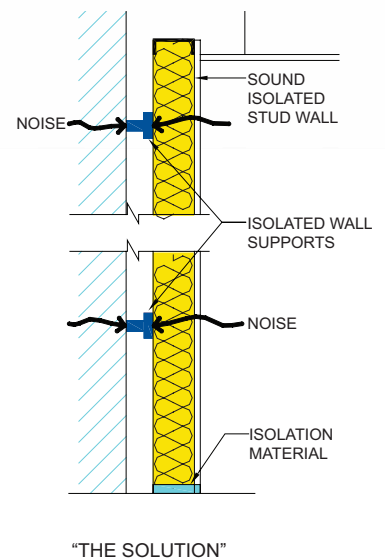
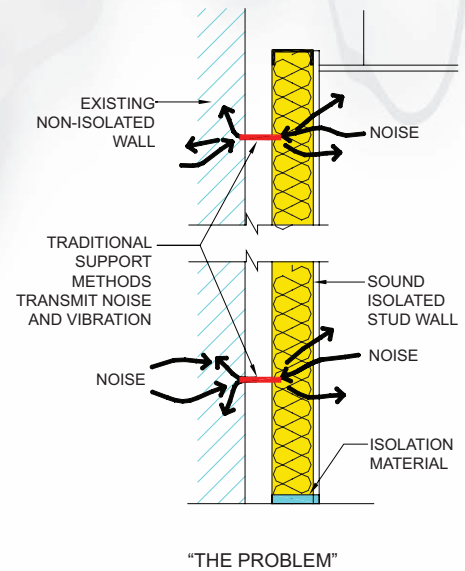
Isolated Wall Braces for Double Wall Assemblies

Unibrace-L and PSB

- Add structural integrity to isolated partition
- Ensure quiet space performs as designed
- Prevent wall buckling during seismic event

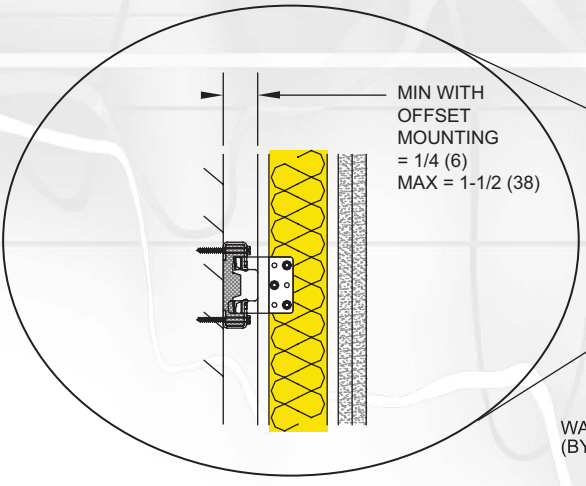
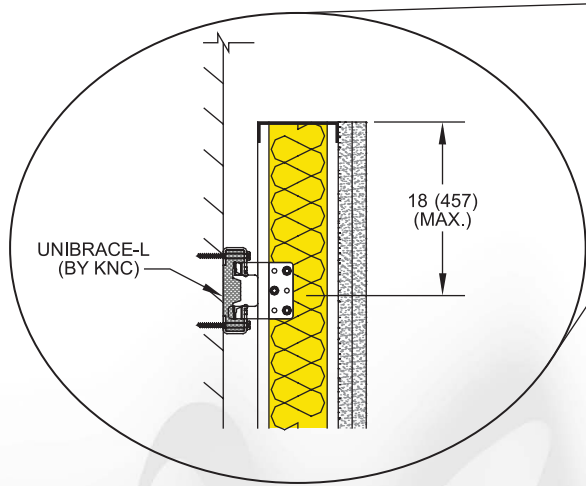
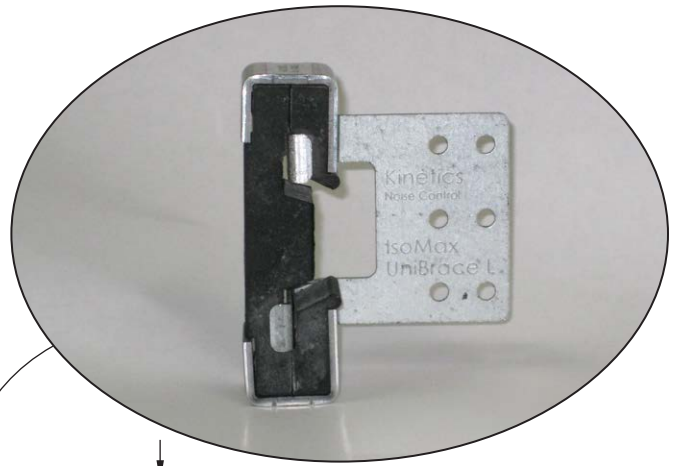
Sometimes overlooked in otherwise proper acoustic design, isolated wall braces play an important role in maintaining quiet spaces. Often used in conjunction with other noise control materials on the top and/or bottom of an isolated partition, these supports provide bracing for an isolated double-stud or masonry wall without creating a transmission path for noise and vibration.

Isolated wall braces should be employed whenever a secondary wall is used for improved sound control and rigid bracing will cause unwanted noise transfer. It is important to note that these devices do not add to the STC (Sound Transmission Class) rating of a partition, instead they provide structural stability without sacrificing acoustic performance.

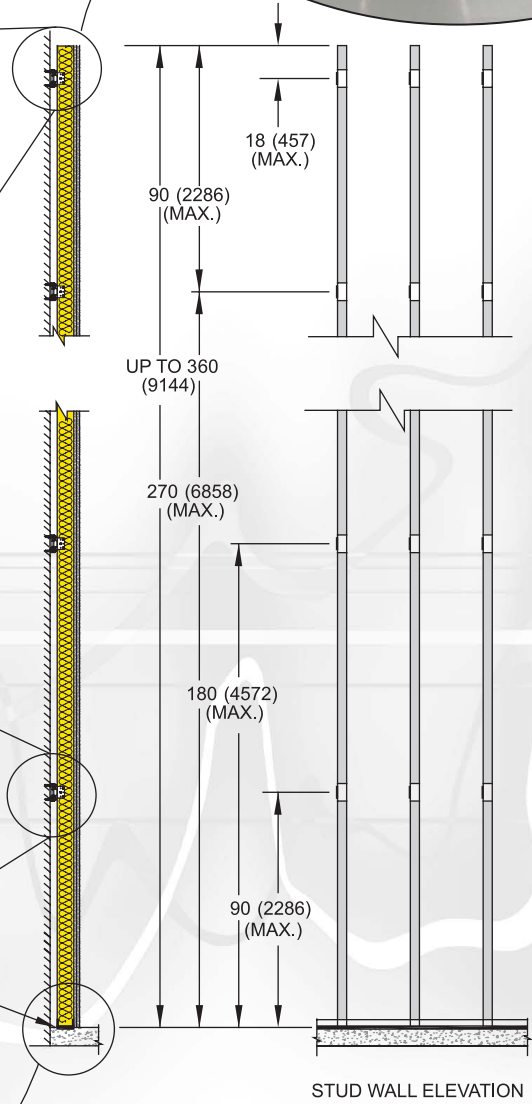


Unibrace-L — Maximize Occupied Space

Below: Stud Layout with Unibrace-L



DIMENSION FORMAT: IN (mm)

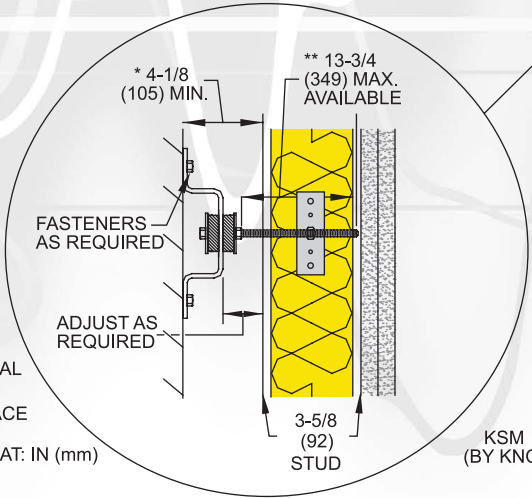
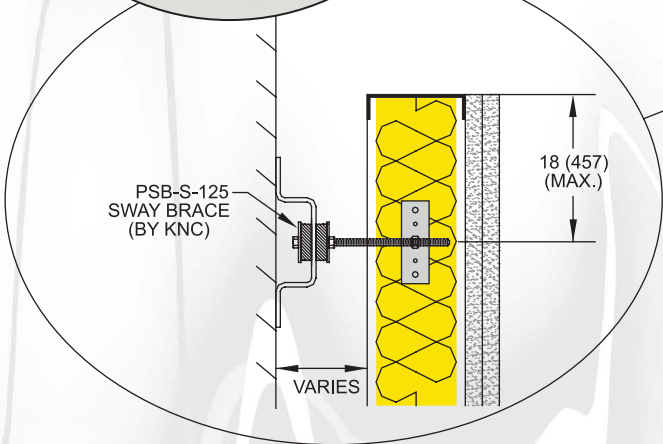
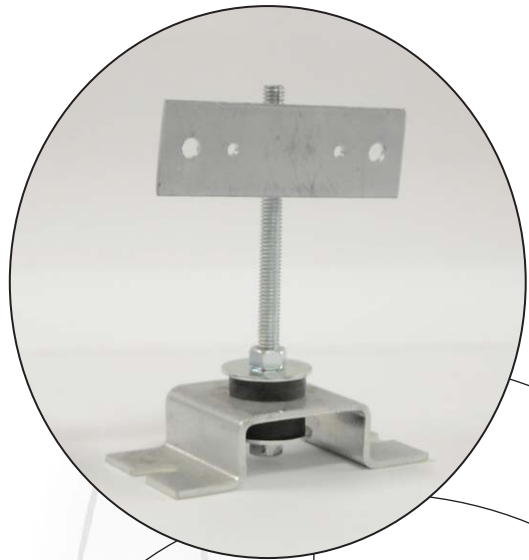


Wallmat Top and Bottom Wall Isolation

- Continuous resilient support of the partition
- Use KAI isolation bushing assemblies for 100% resilient separation
- Use for both top and bottom plate installation

PSB-S Large Airspace and Stud Wall Support

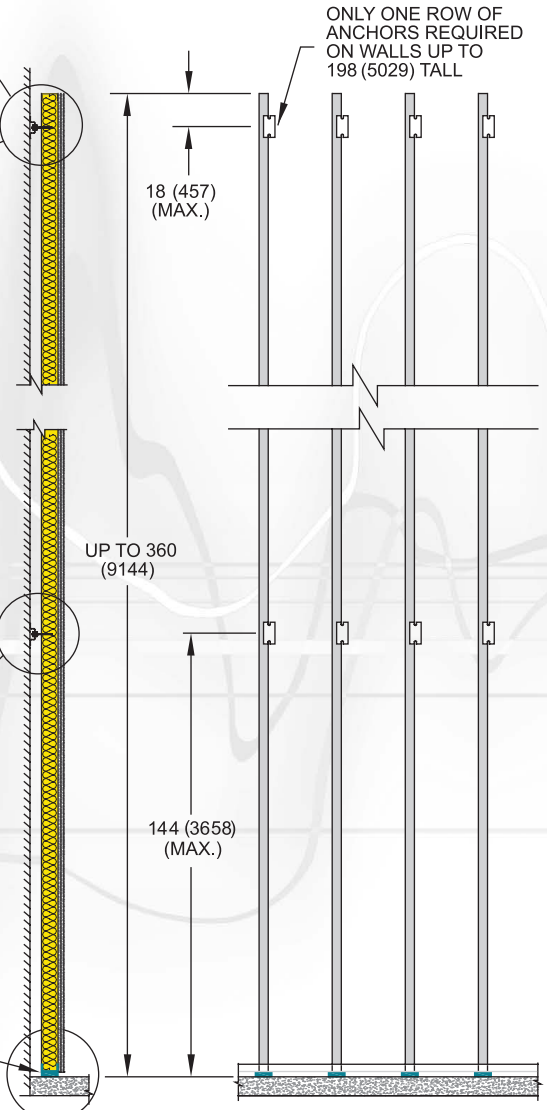
Below: Steel or Wood Stud Layout with PSB-S



* MINIMUM AIR SPACE WITH STANDARD BOLT (SHORTER BOLT AVAILABLE)

** ORDER OPTIONAL LONG BOLT FOR MAXIMUM AIR SPACE

DIMENSION FORMAT: IN (mm)



KSM Bottom Wall Isolation

- Can be used in potentially wet areas
- 16" typical spacing

