

KINETICS®

Leveling Machinery Mounts

Model KLM

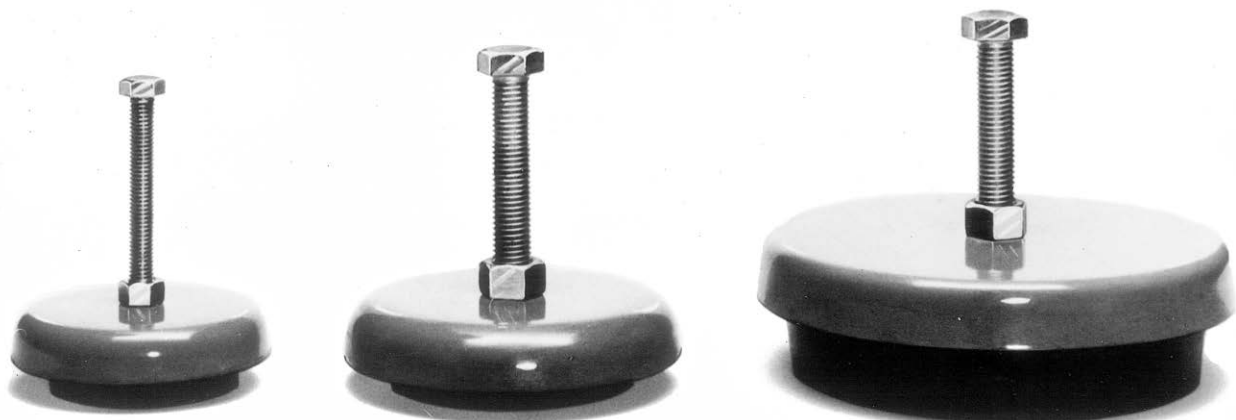
Description and Application

Kinetics KLM Leveling Machinery Mounts consist of high-quality, oil-resistant elastomer inserts, each bonded to a heavy gauge steel load support and leveling assembly. The machinery mount effectively reduces the transmission of shock and vibration produced by industrial or process equipment. The stamped steel top load plate provides a large diameter load bearing surface for the supported equipment and allows up to 1/2" (13 mm) of leveling to compensate for uneven floors.

Because the KLM mount significantly reduces the transmission of shock and vibration to the structure and because of the unique ribbed design of the lower load surface, anchoring to the floor is not necessary.

KLM mounts significantly reduce machine installation time and provide unlimited flexibility. The supported machine can be relocated or moved without the necessity of installing new anchor bolts, grouting, etc.

Kinetics KLM are available in two (2) sizes in capacities from 250 to 4,000 lbs. (113 to 1814 kg) per mount, with maximum static deflection ratings from 0.20 to 0.25" (5 to 6 mm). Model KLM Machinery Mounts are recommended for the isolation of punch presses operating up to 125 spm, milling machines, brakes, jig borers, printing presses, condensate receivers, lathes, processing equipment, etc.



Dimensions and Capacities

Type	Rated Capacity		Max. Defl		A		B		C	
	lbs	kg	in	mm	in	mm	in	mm	in	mm
KLM-1	250 - 1000	113 - 454	0.20	5	5.00	127	1.75	44	0.50 NC x 5.00 LONG	13 NC x 127 LONG
KLM-4	1000 - 4000	454 - 1814	0.25	6	6.25	159	1.75	44	0.75 NC x 5.00 LONG	19 NC x 127 LONG

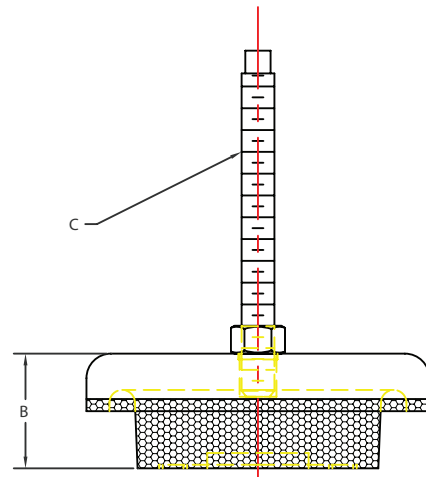
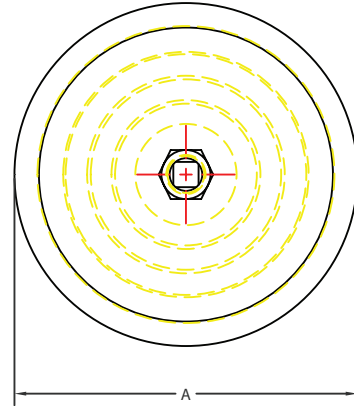
Specifications

Isolators shall be constructed of high-quality, oil-resistant elastomer compound bonded to a heavy gauge steel load support plate. The elastomer compound shall be molded to provide a concentric ribbed ring lower load surface which shall serve to eliminate the need to anchor the isolator to the floor.

The steel load plate shall incorporate a threaded equipment attachment and leveling bolt which shall be capable of leveling the equipment up to 1/2" (13 mm).

Isolators shall be sized to support the equipment minimum weight and shall have a rated minimum static deflection of 0.2" (5 mm).

Isolators shall be model KLM by Kinetics Noise Control, Inc.



kineticsnoise.com
 sales@kineticsnoise.com
 1-800-959-1229