

# Anchorage 2335

Acoustic



**Birch**  
2129



**Vanilla**  
2130



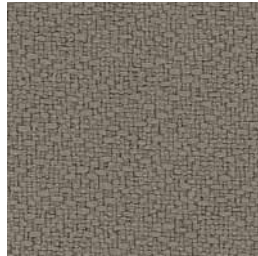
**Sunshine**  
2082



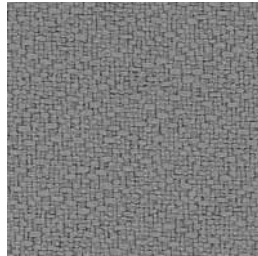
**Straw**  
2034



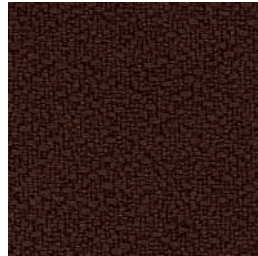
**Angora**  
2035



**Goose**  
2049



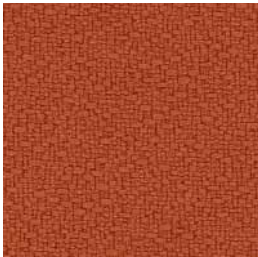
**Asteroid**  
2053



**Coffee Bean**  
2083



**Amber**  
2020



**Pumpkin**  
2021



**Geranium**  
2084



**Magenta**  
2692



**Red Delicious**  
2014



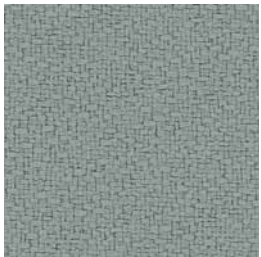
**Henna**  
2052



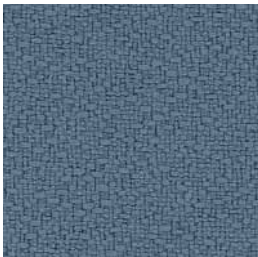
**Mulberry**  
2044



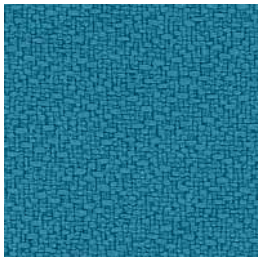
**Aubergine**  
2036



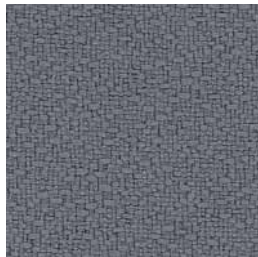
**Slate**  
2017



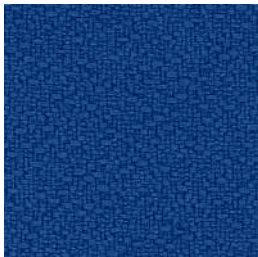
**Quarry Blue**  
2026



**Waterfall**  
2691



**Wolf**  
2027



**Lapis**  
2094



**Thistle**  
2085



**Cobalt**  
2045



**Midnight**  
2025



**Green Olive**  
2048



**Eucalyptus**  
2047



**Green Apple**  
2087



**Cumin**  
2050



**Willow**  
2028



**Fossil**  
2093



**Graphite**  
2079



**Onyx**  
2016

# Anchorage 2335

Acoustic

## Specifications

### Content

35% post-consumer recycled polyester  
65% pre-consumer recycled polyester

### Weight

15.0 ± 1.0 oz./lin. yd.

### Width

66" min. useable


### Repeat


none


## Cleaning Code


W-S

## Performance

 **Colorfastness to Light (AATCC 16 Option 3)**  
Grade 4 min. at 40 hours

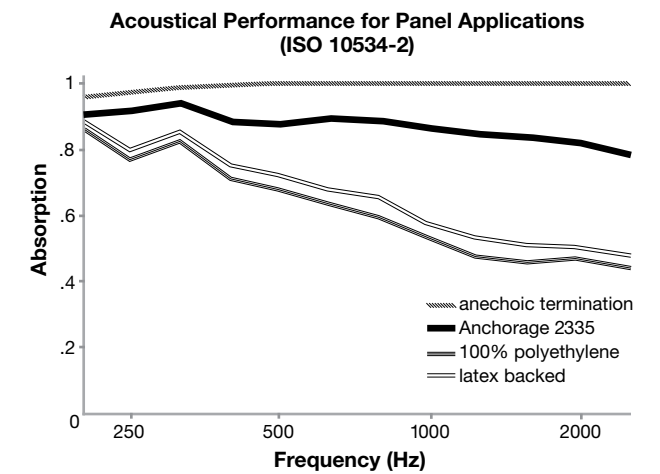
 **Colorfastness to Crocking (AATCC 8)**  
Grade 4 min. dry & Grade 3 min. wet

 **Breaking Strength (ASTM D5034)**  
275 lbf min. warp and fill

 **Flammability (ASTM E84)**  
Class I or A

## Acoustical Performance

The plot below summarizes impedance tube measurements of absorption of an anechoic termination and various fabrics in front of the anechoic termination.



**NRC of anechoic termination**  
1.00

**NRC of fabric in front of anechoic termination**  
.85

## Miscellaneous

Colors may vary slightly between dye lots.  
This is a directional fabric.  
Application testing of this product is recommended.  
Also available in 54" width (Open House 2334).

Visit [guilfordofmaine.com](http://guilfordofmaine.com) for complete specs and samples.



Terratex is a registered trademark of True Textiles, Inc. and designates fabrics that are made from 100% recycled or compostable material using increasingly sustainable manufacturing practices to produce a high quality product that is recyclable at the end of its useful life. ([terratex.com](http://terratex.com))



CO<sub>2</sub> emissions from 100% of the electricity used by the manufacturer to produce this product have been measured and offset in accordance with The CarbonNeutral Protocol.



This pattern is included in the underwriters laboratory panel fabric recognition program. Additional testing of this U.L. recognized component fabric is not required on approved panels from participating manufacturers.

\*ACT\* registered certification marks.

## Guilford of Maine

[guilfordofmaine.com](http://guilfordofmaine.com)

5300 Corporate Grove Drive SE  
Suite 250  
Grand Rapids, MI 49512

800 544 0200 Sales Service  
207 876 3806 Fax

04/12