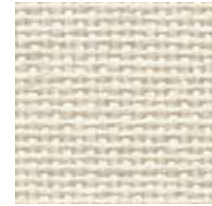
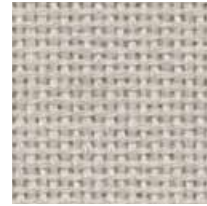


FR701® 2100

Acoustic



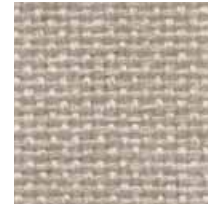
Eggshell
144



Pearl
481



Opal
394



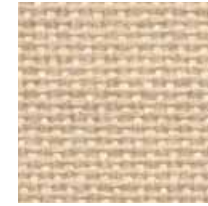
Desert Sand
758



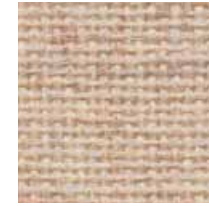
Wheat
130



Buff
460



Bone
748



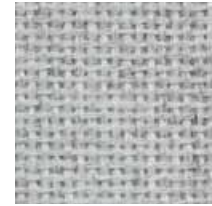
Vanilla Neutral
403



Straw
747



Sunshine
797



Silver Papier
538



Blue Neutral
401



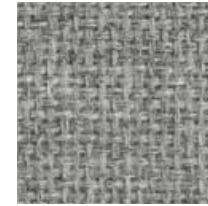
Blue Papier
539



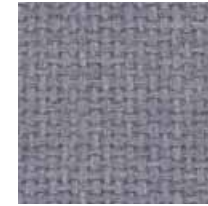
Cement Mix
750



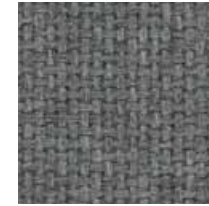
Silver Neutral
406



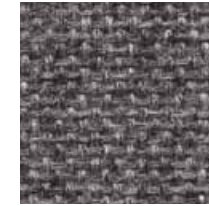
Grey Mix
238



Steel Grey
471



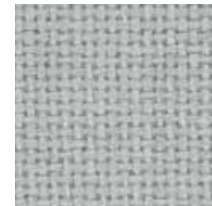
Flannel
795



Medium Grey
298



Black
408



Coin
794



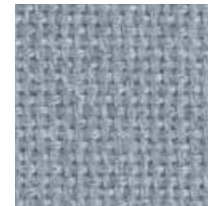
Verte Papier
561



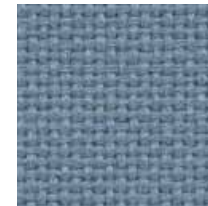
Green Neutral
402



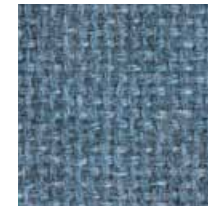
Lake
756



Crystal Blue
175



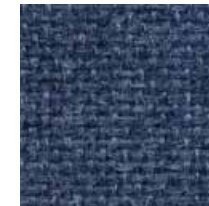
Bayberry
486



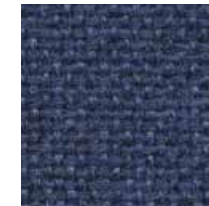
Wedgewood
150



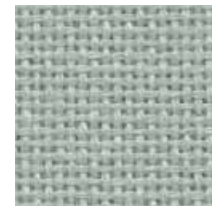
Cobalt
420



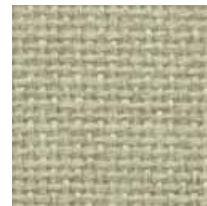
Baltic
153



Blue Plum
553



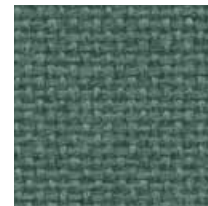
Eucalyptus
468



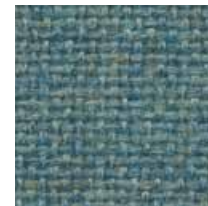
Leaf
755



Stream
757



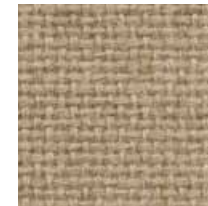
Blue Spruce
467



Aquamarine
381



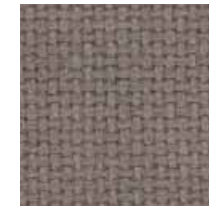
Dune
749



Light Moss
754



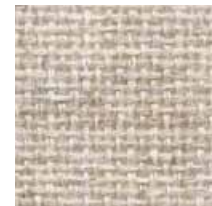
Earth
792



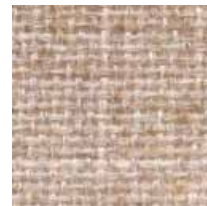
Moleskin
796



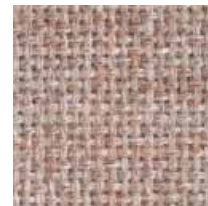
Chocolate
793



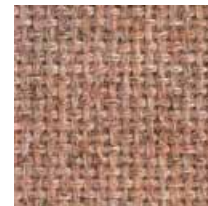
Quartz
380



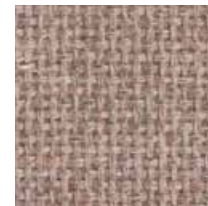
Apricot Neutral
404



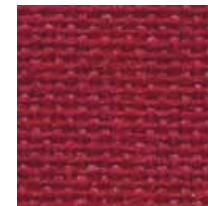
Cherry Neutral
400



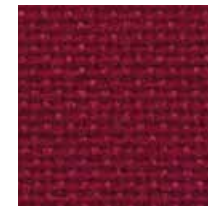
Cinnabar
422



Pumice
423



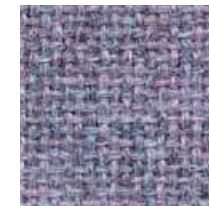
Red
799



Claret Accent
418



Deep Burgundy
556



Amethyst
424



Iris
798

FR701® 2100

Acoustic

Specifications

Content

100% post-consumer recycled polyester

Weight

16.0 ± 0.5 oz./lin. yd.

Width

66" min. useable


Repeat


none


Cleaning Code


W-S

Performance

 **Colorfastness to Light (AATCC 16 Option 3)**
Grade 4 min. at 40 hours

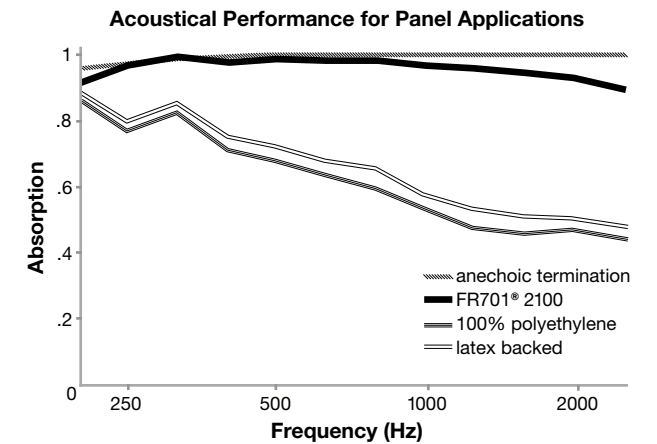
 **Colorfastness to Crocking (AATCC 8)**
Grade 4 min. dry & Grade 3 min. wet

 **Breaking Strength (ASTM D5034)**
150 lbf min. warp and fill

 **Flammability (ASTM E84)**
Class I or A

Acoustical Performance

The plot below summarizes impedance tube measurements of absorption of an anechoic termination and various fabrics in front of the anechoic termination.



NRC of anechoic termination
1.00

NRC of fabric in front of anechoic termination
.95

Miscellaneous

Colors may vary slightly between dye lots.
This is a non-directional fabric.
Application testing of this product is recommended.

Visit guilfordofmaine.com for complete specs and samples.



Terratex is a registered trademark of True Textiles, Inc. and designates fabrics that are made from 100% recycled or compostable material using increasingly sustainable manufacturing practices to produce a high quality product that is recyclable at the end of its useful life. (terratex.com)



CO₂ emissions from 100% of the electricity used by the manufacturer to produce this product have been measured and offset in accordance with The CarbonNeutral Protocol.



This pattern is included in the underwriters laboratory panel fabric recognition program. Additional testing of this U.L. recognized component fabric is not required on approved panels from participating manufacturers.

*ACT® registered certification marks.

Guilford of Maine

guilfordofmaine.com

5300 Corporate Grove Drive SE
Suite 250
Grand Rapids, MI 49512

800 544 0200 Sales Service
207 876 3806 Fax

12/11