

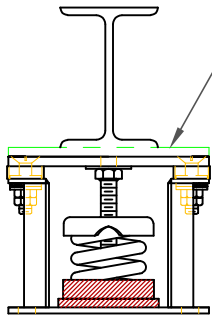
FLS 1" DEFLECTION ISOLATOR
IP UNITS (INCHES AND POUNDS)

TYPE	L	W	A	B	D	E	F	d	H
1-12/805	7.00	3.50	1.75	0.50	0.56	1.75	1.88	0.44	4.44

*ALL MOUNTING BOLT PATTERNS SYMMETRICAL ABOUT ISOLATOR CENTER-LINE

STANDARD RATINGS		SPRING COIL			
TYPE	SIZE	COLOR		LOAD	DEFL.
FLS	1-12	SILVER		12	1.00
FLS	1-18	YELLOW		18	1.00
FLS	1-24 (35)	BLUE		23	1.04
FLS	1-30	PINK		30	1.00
FLS	1-37	WHITE		37	1.00
FLS	1-50 (70)	GREEN		51.5	0.97
FLS	1-75	BLACK		74	1.01
FLS	1-100 (120)	GRAY		101.7	0.98
FLS	1-150	RED		150	1.00
FLS	1-210 (220)	BROWN		205.6	1.02
FLS	1-300	PURPLE		300	1.00
FLS	1-385 (370)	ORANGE		385.4	0.99
FLS	1-500	BEIGE		500	1.00
FLS	1-600	CHROME		600	1.00
FLS	1-700	BEIGE	WHITE	700	1.00
FLS	1-805	CHROME	WHITE	805	1.01

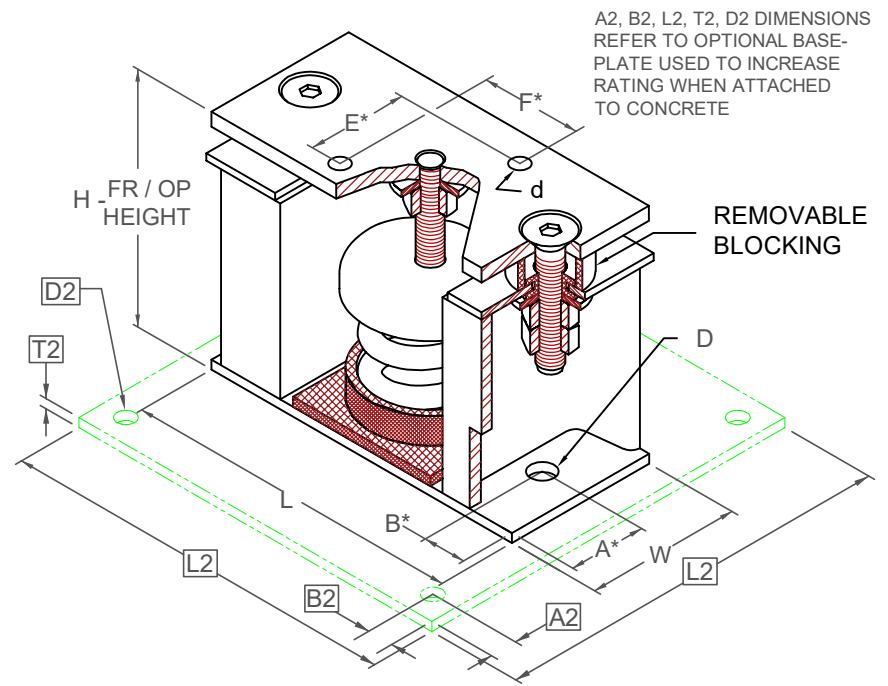
1-12/805 REQUIRES 0.50 DIA. x 4.00 MIN. EMBED ANCHORS IN CONCRETE
(ALLOWABLE LOADS BASED ON 3000 PSI MIN CONCRETE)
1-12/805 ANCHOR BOLT TORQUE - 55 FT-LB, PULL TEST - 1750 LB



IF EQUIP SUPPORT STEEL IS 90° TO THE LONG ISOLATOR AXIS, AN ADD'L PLATE EQUAL IN THICKNESS TO THE TOP PLATE IS REQUIRED

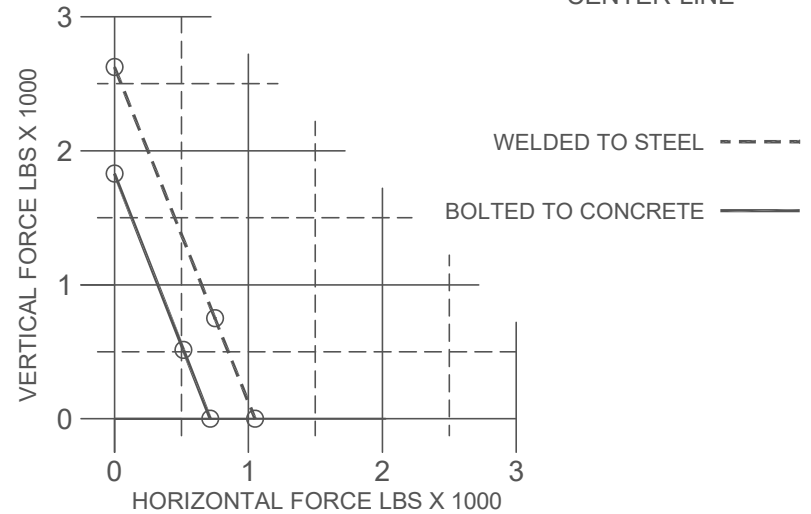
SPECIFICATIONS:

- VERTICALLY AND LATERALLY RESTRAINED SPRING ISOLATOR WITH CONSTANT FREE AND OPERATING HEIGHT AND REPLACEABLE NEOPRENE SNUBBING ELEMENTS.
- MINIMUM COIL OVERLOAD OF 50%.
- MINIMUM Kx/Ky RATIO OF 1.0.
- ALL ELEMENTS SAFE AT SOLID LOADING.
- POWDER COATED COILS AND HOT DIPPED GALVANIZED BRACKET.
- HOUSINGS MAY BE USED FOR BLOCKING DURING EQUIPMENT ERECTION.



A2, B2, L2, T2, D2 DIMENSIONS REFER TO OPTIONAL BASE-PLATE USED TO INCREASE RATING WHEN ATTACHED TO CONCRETE

*ALL MOUNTING BOLT PATTERNS SYMMETRICAL ABOUT ISOLATOR CENTER-LINE



Computed horiz and vert seismic load combinations must fall within the restraint capacity envelope. Contact KNC for bolted to steel data.



KINETICS NOISE CONTROL, INC
6300 IRELAN PL,
DUBLIN, OH 43017 USA
Ph: 614 889-0480, Fax: 614 889-0540
www.kineticsnoise.com

Model:

FLS-1-12/805

By: BB

Date: 03/21/05

Revised: 02/20/24 /SMB

Drawing No:

S-01.22-10