

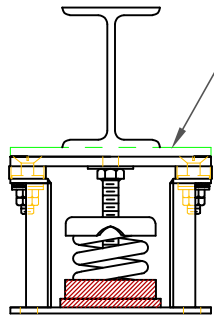
FLS 25 mm DEFLECTION ISOLATOR
S-I UNITS (mm AND kg)

TYPE	L	W	A	B	D	E	F	d	H
1-12/805	178	76	38	13	14	44	48	11	113

*ALL MOUNTING BOLT PATTERNS SYMMETRICAL ABOUT ISOLATOR CENTER-LINE

STANDARD RATINGS		SPRING COIL			
TYPE	SIZE	COLOR		LOAD	DEFL.
FLS	1-12	SILVER		5	25
FLS	1-18	YELLOW		8	25
FLS	1-24 (35)	BLUE		10	39
FLS	1-30	PINK		14	25
FLS	1-37	WHITE		17	25
FLS	1-50 (70)	GREEN		23	35
FLS	1-75	BLACK		34	25
FLS	1-100 (120)	GRAY		46	30
FLS	1-150	RED		68	25
FLS	1-210 (220)	BROWN		93	27
FLS	1-300	PURPLE		136	25
FLS	1-385 (370)	ORANGE		175	24
FLS	1-500	BEIGE		227	25
FLS	1-600	CHROME		272	25
FLS	1-700	BEIGE	WHITE	318	25
FLS	1-805	CHROME	WHITE	365	26

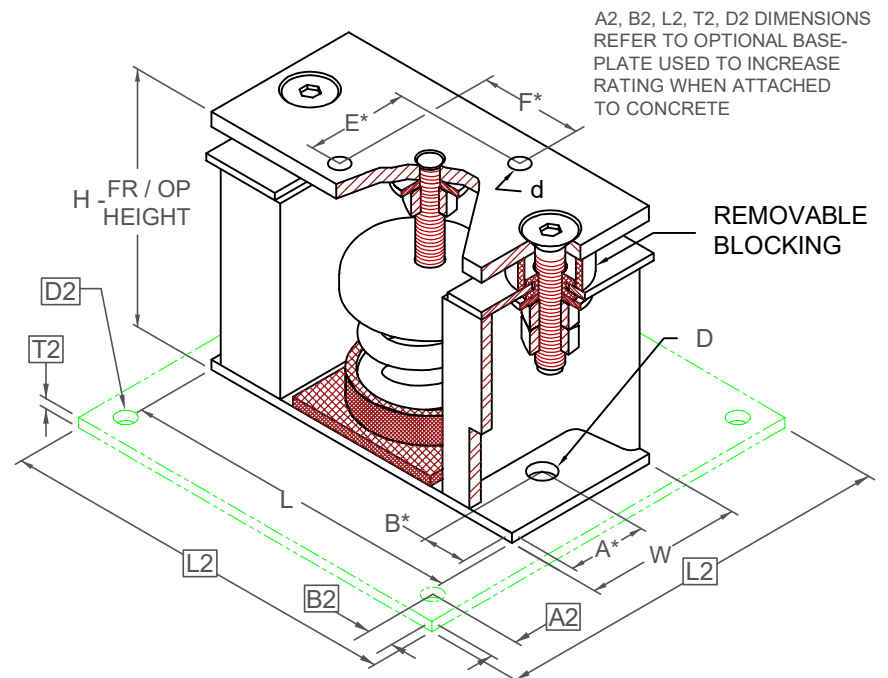
1-12/805 REQUIRES 013 DIA. x 102 MIN. EMBED ANCHORS IN CONCRETE
(ALLOWABLE LOADS BASED ON 21 MPa MIN CONCRETE)
1-12/805 ANCHOR BOLT TORQUE - 75 N-M, PULL TEST - 794 kg



IF EQUIP SUPPORT STEEL IS 90° TO THE LONG ISOLATOR AXIS, AN ADD'L PLATE EQUAL IN THICKNESS TO THE TOP PLATE IS REQUIRED

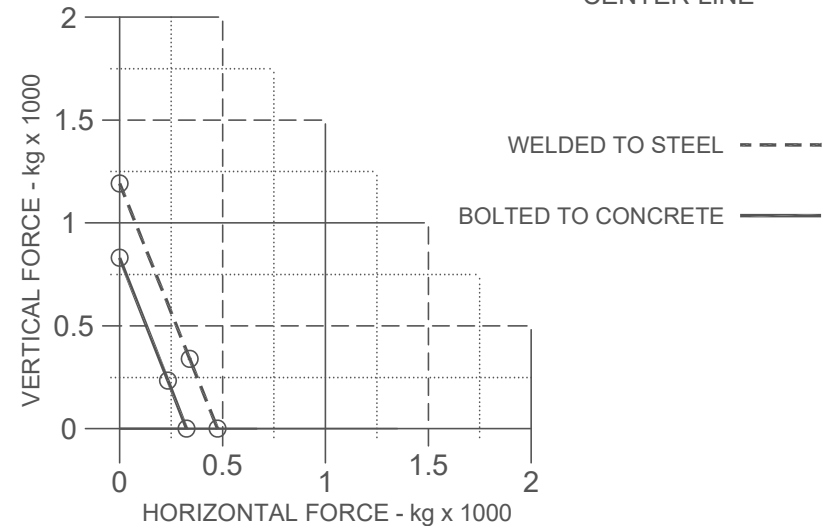
SPECIFICATIONS:

- VERTICALLY AND LATERALLY RESTRAINED SPRING ISOLATOR WITH CONSTANT FREE AND OPERATING HEIGHT AND REPLACEABLE NEOPRENE SNUBBING ELEMENTS.
- MINIMUM COIL OVERLOAD OF 50%.
- MINIMUM Kx/Ky RATIO OF 1.0.
- ALL ELEMENTS SAFE AT SOLID LOADING.
- POWDER COATED COILS AND HOT DIPPED GALVANIZED BRACKET.
- HOUSINGS MAY BE USED FOR BLOCKING DURING EQUIPMENT ERECTION.



A2, B2, L2, T2, D2 DIMENSIONS REFER TO OPTIONAL BASE-PLATE USED TO INCREASE RATING WHEN ATTACHED TO CONCRETE

*ALL MOUNTING BOLT PATTERNS SYMMETRICAL ABOUT ISOLATOR CENTER-LINE



Computed horiz and vert seismic load combinations must fall within the restraint capacity envelope. Contact KNC for bolted to steel data.



KINETICS NOISE CONTROL, INC
6300 IRELAN PL,
DUBLIN, OH 43017 USA
Ph: 614 889-0480, Fax: 614 889-0540
www.kineticsnoise.com

Model:

FLS-1-12/805

By: BB

Date: 03/21/05

Revised: 02/20/24 /SMB

Drawing No:

S-01.22-10
METRIC