

FLS 102 mm DEFLECTION ISOLATOR

S-I UNITS (mm AND kg)

TYPE	L	W	T	A	B	D	E	F	d	H	TT
4-5500/11600	648	203	13	29	44	21	140	140	17	445	16

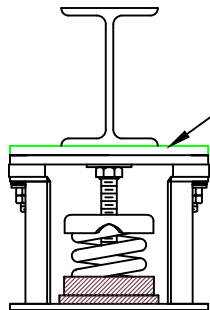
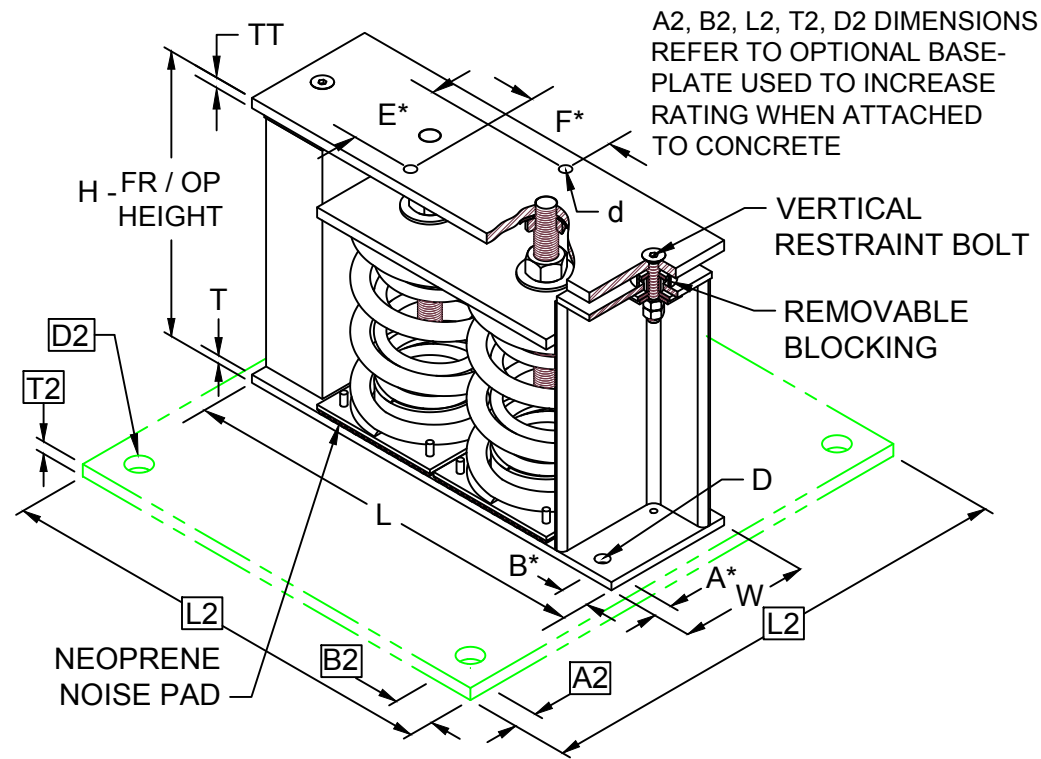
*ALL MOUNTING BOLT PATTERNS SYMMETRICAL ABOUT ISOLATOR CENTER-LINE

STANDARD RATINGS		SPRING COIL					
TYPE	SIZE	COLOR		FREE	O.D.	RATED	
		OUTER	INNER	HT.		LOAD	DEFL.
FLS	4-5500	BEIGE	GREEN	292	203	2495	102
FLS	4-6000	BEIGE	BLACK	292	203	2722	102
FLS	4-6500	BEIGE	RED	292	203	2948	102
FLS	4-7000	BEIGE	BROWN	292	203	3175	102
FLS	4-7700	BEIGE	ORANGE	292	203	3493	102
FLS	4-8400	CHROME		292	203	3810	102
FLS	4-8900	CHROME	BLUE	292	203	4037	102
FLS	4-9400	CHROME	GREEN	292	203	4264	102
FLS	4-9900	CHROME	BLACK	292	203	4491	102
FLS	4-10400	CHROME	RED	292	203	4717	102
FLS	4-10900	CHROME	BROWN	292	203	4944	102
FLS	4-11600	CHROME	ORANGE	292	203	5262	102

4-5500/11600 REQUIRES 016 DIA. x 102 MIN. EMBED ANCHORS IN CONCRETE

(ALLOWABLE LOADS BASED ON 21 MPa MIN CONCRETE)

4-5500/11600 ANCHOR BOLT TORQUE - 102 N-M, PULL TEST - 1211 kg

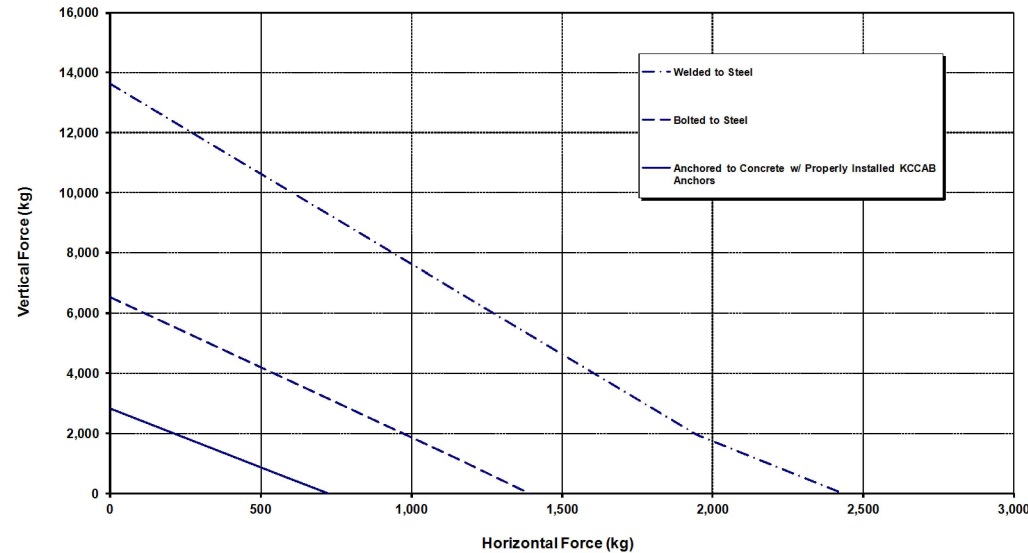


IF EQUIP SUPPORT STEEL IS 90° TO THE LONG ISOLATOR AXIS, AN ADD'L PLATE EQUAL IN THICKNESS TO THE TOP PLATE IS REQUIRED

SPECIFICATIONS:

- VERTICALLY AND Laterally RESTRAINED SPRING ISOLATOR WITH CONSTANT FREE AND OPERATING HEIGHT AND REPLACEABLE NEOPRENE SNUBBING ELEMENTS.
- WHEN PROPERLY ADJUSTED, MAX. CLEARANCE IN SNUBBING ELEMENTS IS LIMITED TO 0.25 (6) INCHES.
- MINIMUM COIL OVERLOAD OF 50%.
- MINIMUM Kx/Ky RATIO OF 1.0.
- ALL ELEMENTS SAFE AT SOLID LOADING.
- POWDER COATED COILS AND HOT DIPPED GALVANIZED HOUSING.
- HOUSINGS MAY BE USED FOR BLOCKING DURING EQUIPMENT ERECTION.

FLS-4-5500/11600 Seismic Capacity Envelopes



Computed horizontal and vertical seismic combinations must fall within the restraint capacity envelope



KINETICS NOISE CONTROL, INC
6300 IRELAN PL,
DUBLIN, OH 43017 USA
Ph: 614 889-0480, Fax: 614 889-0540
www.kineticsnoise.com

Model:
FLS-4-
5500/11600

By: JMJ
Date: 07/09/02
Revised: 04/11/17 / BB

Drawing No:
S-01.22-43
METRIC