



Geometric Diffusers

SOUND DIFFUSERS

THE SHAPED SURFACES OF KINETICS' GEOMETRIC DIFFUSERS BREAK UP DIRECT SOUND REFLECTIONS AND DISBURSE THEM MORE EVENLY THROUGHOUT THE LISTENING SPACE.

Random disbursement of sound reflections greatly improves sound quality and consistency for the listener. That's why **Geometric Diffusers** are perfect for band and choral rehearsal rooms and performance spaces. The shaped surfaces of the Diffusers break up direct sound reflections and disburse them evenly throughout the listening space. Auditoriums will benefit with the use of Diffusers on the rear and side walls.

Available in two standard shapes, offset pyramidal and radius, Geometric Diffusers are commonly used

in conjunction with Kinetics' acoustical wall panels; a combination of sound diffusion and absorption that greatly improves overall room acoustics. Geometric Diffusers are also used in lay-in 15/16" standard grid ceilings (can be factory modified for 9/16" grid, please specify when ordering).

Diffusers are provided in a white thermo-molded copolymer. Optional painted surfaces are available. All radius and pyramidal diffusers are available with optional fabric facing using factory approved materials.

Geometric Sound Diffusers

DESCRIPTION

- Geometric sound diffusers for wall or lay-in ceiling
- Field paintable
- Radius diffusers available in 2' x 2', 3' x 3', 2' x 4', 3' x 4', 4' x 4', 3' x 6', and 4' x 6' (nominal sizes)
- Offset pyramidal diffusers available in 2' x 2', 2' x 4' and 4' x 4' (nominal sizes)

FIRE TEST DATA

Class A per ASTM E84

ACOUSTICAL PERFORMANCE

Per ASTM C-423, thermo-mold plastic units

Frequency (Hz)	125	250	500	1K	2K	4K	NRC
A Mounting ¹	0.48	0.12	0.10	0.05	0.03	0.03	0.10
E400 Mounting	0.36	0.15	0.09	0.07	0.05	0.10	0.10
J Mounting ²	1.11	0.43	0.34	0.24	0.18	0.19	0.30

¹(Flush to wall)

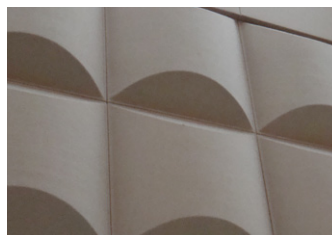
²(Flush to wall, panel array staggered) with fiberglass fill (1 PCF) and fabric facing

COMPOSITION

- 0.125" thick, thermo-molded plastic
- Optional fiberglass batt insulation or damping layer can be bonded to concave rear surface of diffusers
- Optional fabric facing from Guilford of Maine, or factory-approved customer-selected material



Pyramidal Diffusers



Radius Diffusers

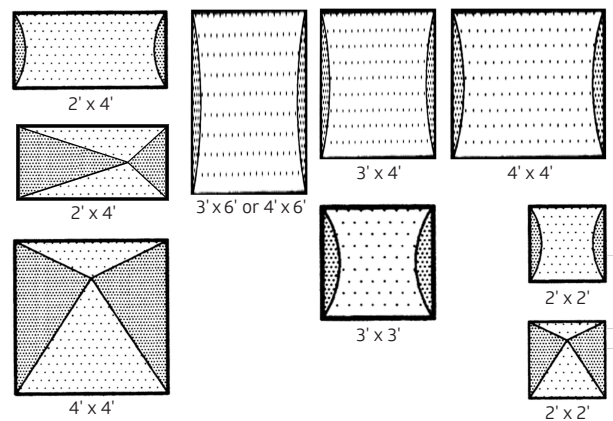
APPLICATIONS

- Areas where more consistent sound levels across a wide frequency range are desired
- Auditoriums / lecture halls
- Band / choral rehearsal rooms (walls / ceilings)
- Music performance spaces

MOUNTING

- Wall mounting with Z-clip and angle brackets
- Lay-in ceiling with 15/16" suspension grid

STANDARD COPOLYMER DIFFUSERS



*Actual width and length dimensions for all diffusers except the 4' x 6' model are 1/4" less than the nominal dimensions listed. This allows for installation in a lay-in ceiling grid.