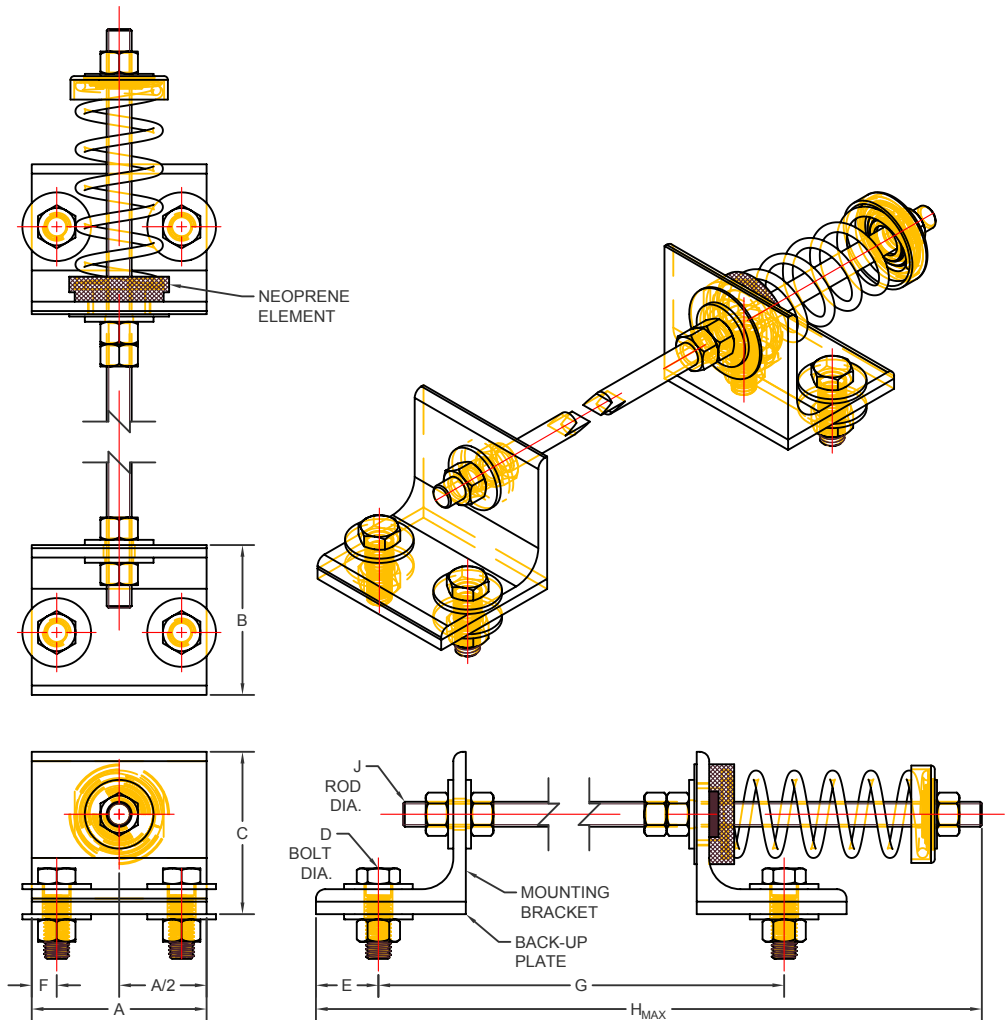


HSR 51 mm DEFLECTION ISOLATOR

S-I UNITS (mm AND kg)

TYPE	A	B	C	D	E	F	G _{MAX}	G _{MIN}	H _{MAX}	J
2-35/220	89	76	76	13	32	13	379	129	507	13
2-100/1975	127	76	127	13	25	13	334	153	503	16

STANDARD RATINGS		SPRING COIL					
		COLOR		FREE		RATED	
TYPE	SIZE	OUTER	INNER	HT.	O.D.	LOAD	DEFL.
HSR	2-35	BLUE		105	44	16	51
HSR	2-70	GREEN		105	44	32	51
HSR	2-120	GRAY		105	44	54	51
HSR	2-220	BROWN		105	44	100	51
HSR	2-100	GRAY		155	89	45	51
HSR	2-135	BEIGE		155	89	61	51
HSR	2-185	BROWN		155	89	84	51
HSR	2-225	GRAY	BROWN	155	89	102	51
HSR	2-250	BLUE		155	89	113	51
HSR	2-375	BLUE	BROWN	155	89	170	51
HSR	2-500	GREEN		155	89	227	51
HSR	2-625	GREEN	BROWN	155	89	283	51
HSR	2-750	BLACK		155	89	340	51
HSR	2-875	BLACK	BROWN	155	89	397	51
HSR	2-995	ORANGE		155	89	451	51
HSR	2-1120	ORANGE	BROWN	155	89	508	51
HSR	2-1400	ORANGE	GREEN	155	89	635	51
HSR	2-1600	RED		155	89	726	51
HSR	2-1975	RED	GREEN	155	89	896	50



SPECIFICATIONS:

ISOLATORS ARE PROVIDED IN PAIRS.
 ISOLATORS HAVE A MINIMUM Kx/Ky RATIO OF 1.0.
 ISOLATORS HAVE A TYPICAL OVERLOAD CAPACITY OF 50%.
 SPRING ELEMENTS ARE SAFE AT SOLID LOADING.
 SPRING ELEMENTS ARE POWDER COATED.
 MOUNTING BRACKETS AND BACK-UP PLATES ARE PAINTED STEEL.
 ALL HARDWARE TO BE ZINC PLATED.



KINETICS NOISE CONTROL, INC
 6300 IRELAND PL,
 DUBLIN, OH 43017 USA
 Ph: 614 889-0480, Fax: 614 889-0540
 www.kineticsnoise.com

Model:

HSR-2-35/1975

By: JMJ
 Date: 03/14/03
 Revised: 04/27/18 / BB

Drawing No:
 S-01.21-21
 METRIC