



IsoMax™

SOUND ISOLATION CLIPS FOR WALLS AND CEILINGS

ACHIEVE DOUBLE STUD WALL NOISE CONTROL PERFORMANCE IN LESS SPACE AT A LOWER COST FOR LESS MONEY OR ENSURE A CEILING WILL ACHIEVE THE PERFORMANCE RESILIENT CHANNEL CLAIMS.

THE ISOMAX ADVANTAGE

- Save labor with IsoMax!
- Flexible snap or slide-on clips install quickly, allowing for height adjustments during installation of channel
- Error free installation of standard drywall furring channel
- Eliminates accidental short-circuiting common with resilient channel
- Low profile design; maximizes available occupied space
- Low cost for high performance
- Preferred choice for acoustical performance

LOW COST, SPACE SAVING WALLS AND CEILINGS

Designers wanting low-cost, space-saving ceilings and walls that provide superior noise control employ Kinetics **IsoMax Sound Isolation Clips**. Offering significantly higher STC values than drywall attached to resilient channel, IsoMax ensures that installers will not inadvertently screw through the “resilient” leg of the channel into the joist or stud. This feature cannot be underestimated given the frequent, unknown occurrences where resilient channel is accidentally rendered ineffective because it is hard-attached.

Patent No. 7,093,814

IsoMax / Sound Isolation Clips for Walls and Ceilings



ADDITIONAL FEATURES

- Completely engulfs furring channel preventing rattling that comes from metal-to-metal connections, which is common using other isolation clips.
- Bends to allow the clip to adapt and accept all common-sized furring channel
- Easier installation
 - Multiple simple methods to install IsoMax
 - No need to pinch furring channel to fit in IsoMax
 - IsoMax does not need to be dead level to accept furring channel

UL FIRE RATED ASSEMBLIES:

Design No. L583

Floor/Ceiling Assembly **allows the broadest range of joist or truss assemblies** including: engineered "I" joists, wood and steel trusses, 2 x 10 sawn wood joists, and parallel chord trusses.

Allows fiberglass or mineral wool insulation with two (2) layers of gypsum wallboard.

Ceilings

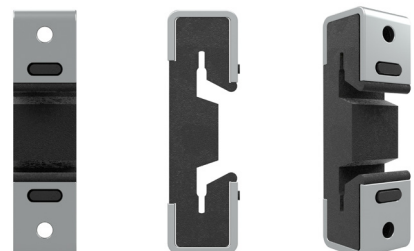
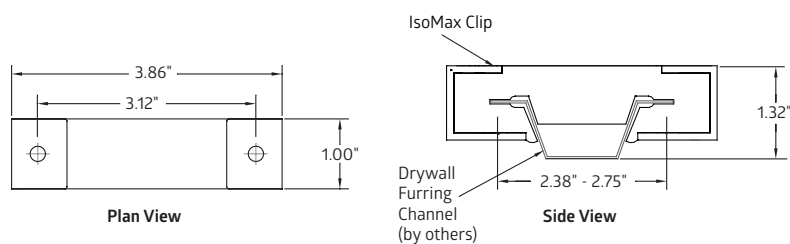
Design No. L546
Design No. V477
Design No. V489

Walls

Design No. U305
Design No. U419



ISOMAX DETAIL



IsoMax / Sound Isolation Clips for Walls and Ceilings

TESTING RESULTS (WOOD FRAMED CONSTRUCTION) / WALL SOUND TESTS FOR AIRBORNE NOISE (STC)

STC-57	STC-61	STC-64
Wood stud partition, 2 x 4, 16" O.C.	Wood stud partition, 2 x 4, 16" O.C.	Wood stud partition, 2 x 4, 16" O.C.
5/8" gypsum board – 1 layer on each side	5/8" gypsum board – 1 layer on non-isolated side and 2 layers on isolated side	5/8" gypsum board – 2 layers on each side
Fiberglass in cavity	Fiberglass in cavity	Fiberglass in cavity
7/8" furring channel	7/8" furring channel	7/8" furring channel
IsoMax clips	IsoMax clips	IsoMax clips
–	–	UL Rated
#AT001056	#AT001057	#AT001058

Compare with #AT001089 which only achieves STC-33 with same wall construction as AT#001056 but without fiberglass in cavity and WITHOUT ISOMAX

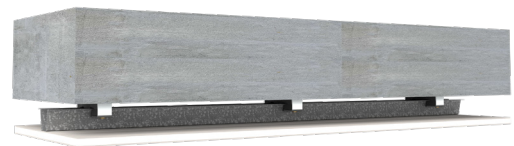
Tested composite wall constructions per ASTM E90 and ASTM E413 at Riverbank Labs

TESTING RESULTS (ADDITIONAL CONSTRUCTION TYPES)

Ceiling Sound Test – Lab #AT001052

Components:

- 6" structural slab
- **IsoMax**
- 1-1/2" furring channel
- 2-1/2" fiberglass insulation compressed to 2" (omitted from image for clarity)
- 5/8" gypsum board



Acoustical Ratings: STC-66 | IIC 44

Ceiling Sound Test – Lab #AT001085

Components:

- Hardwood floor and pad
- 1-1/4" gypcrete
- 3/4" plywood
- 14" I-joint
- Fiberglass (omitted from image for clarity)
- **IsoMax**
- 2 layers 5/8" Type X drywall



Acoustical Ratings: STC-54 | IIC 57

SEE WALL CONSTRUCTION TESTS ON NEXT PAGE →

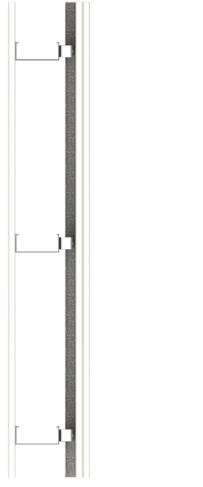
TESTING RESULTS (ADDITIONAL CONSTRUCTION TYPES)

Wall Sound Test – Lab #AT001072

Components:

- 5/8" Type X drywall
- R-19 fiberglass
(omitted from image for clarity)
- 20 gauge, 3-5/8" metal studs
- Perimeter sealant (RWS)
- **IsoMax**
- 25 gauge, 7/8" x 2-9/16" furring channel
- 2 layers 5/8" Type X drywall

Acoustical Ratings: STC-60

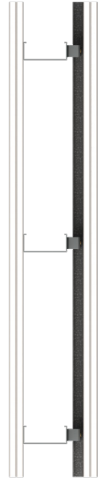


Wall Sound Test – Lab #AT001073

Components:

- 2 layers of 5/8" Type X drywall
- R-19 fiberglass
(omitted from image for clarity)
- 20 gauge, 3-5/8" metal studs
- Perimeter sealant (RWS)
- **IsoMax**
- 25 gauge, 7/8" x 2-9/16" furring channel
- 2 layers 5/8" Type X drywall

Acoustical Ratings: STC-63



[DOWNLOAD TEST REPORTS AND VIEW ADDITIONAL TESTING & BUILDUPS](#)