

## LSM 2" DEFLECTION ISOLATOR, 4.0" SLAB, 2.0" AIR SPACE

STANDARD RATINGS	SPRING COIL			RATED LOAD*
	OUTER	MIDDLE	INNER	
SIZE	COLOR	COLOR	COLOR	
LSM 2-50-4/2	GRAY			100 [45.4]
LSM 2-68-4/2	BEIGE			135 [61.2]
LSM 2-93-4/2	BROWN			185 [83.9]
LSM 2-113-4/2	GRAY	BROWN		225 [102]
LSM 2-125-4/2	BLUE			250 [113.4]
LSM 2-188-4/2	BLUE	BROWN		375 [170]
LSM 2-250-4/2	GREEN			500 [226.8]
LSM 2-313-4/2	GREEN	BROWN		625 [283.5]
LSM 2-375-4/2	BLACK			750 [340.2]
LSM 2-438-4/2	BLACK	BROWN		875 [396.9]
LSM 2-498-4/2	ORANGE			995 [451.3]
LSM 2-560-4/2	ORANGE	BROWN		1120 [508]
LSM 2-650-4/2	BLACK	BROWN	YELLOW	1300 [589.7]
LSM 2-698-4/2	ORANGE	GREEN		1395 [632.8]
LSM 2-800-4/2	RED			1600 [725.7]
LSM 2-910-4/2	ORANGE	GREEN	YELLOW	1820 [825.5]
LSM 2-1000-4/2	RED	GREEN		2000 [907.2]
LSM 2-1113-4/2	RED	GREEN	WHITE	2225 [1009.2]
LSM 2-1225-4/2	SILVER	GREEN		2450 [1111.3]
LSM 2-1413-4/2	SILVER	PINK	WHITE	2825 [1281.4]
LSM 2-1513-4/2	SILVER	PINK	YELLOW	3025 [1281.4]

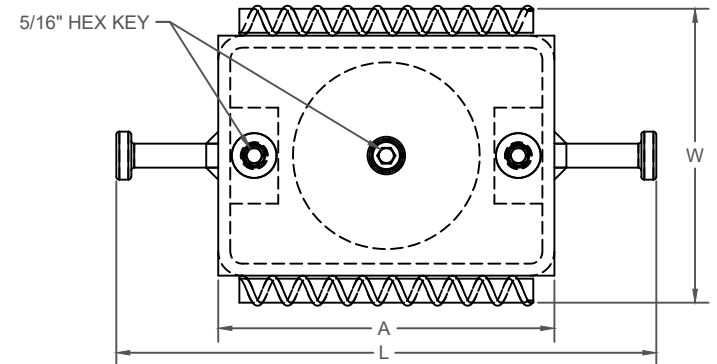
\* RATED LOAD EQUALS THE AMOUNT OF LOAD TO ACHIEVE SPRING DEFLECTION OF 2".

**SPECIFICATIONS:**

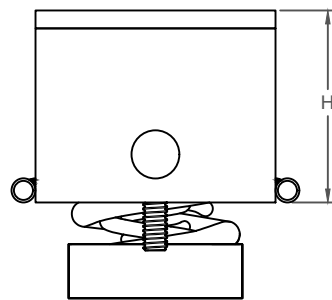
- MINIMUM Kx/Ky RATIO OF 1.0.
- POWDER COATED COILS AND STEEL LID.
- BRIGHT ZINC PLATED HARDWARE.
- CANISTERS ARE PLAIN.
- ALL THREADED MEMBERS ARE UNC.

DIMENSION FORMAT: IN [mm]

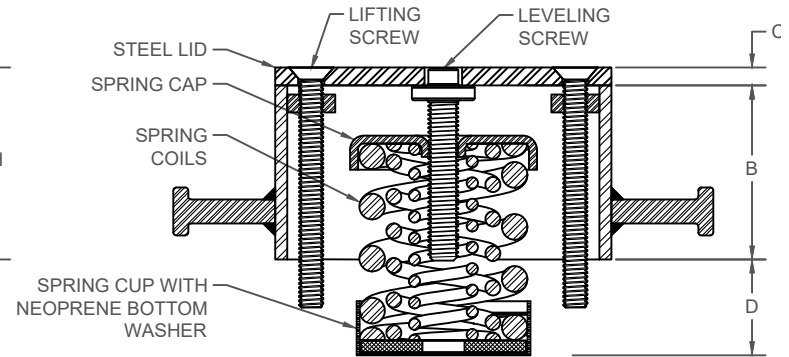
TYPE	IP UNITS (INCHES AND POUNDS)		SI UNITS [MM AND KG]				
	L	W	H	A	B	C	D
2-50-6/2/1513-6/2	11.25 [285.8]	6.00 [152.4]	4.00 [101.6]	7.00 [177.8]	3.63 [92.2]	0.38 [9.7]	2.00 [50.8]



**TOP VIEW**



**SIDE VIEW**



**FRONT SECTION VIEW**

SCALE: 3" = 1'-0"



LSM 2" DEFLECTION ISOLATOR  
4.0" SLAB, 2.0" AIR SPACE

Revised  
4/10/2020

Drawing No.  
AA001983

[kineticsnoise.com/lsm](http://kineticsnoise.com/lsm)