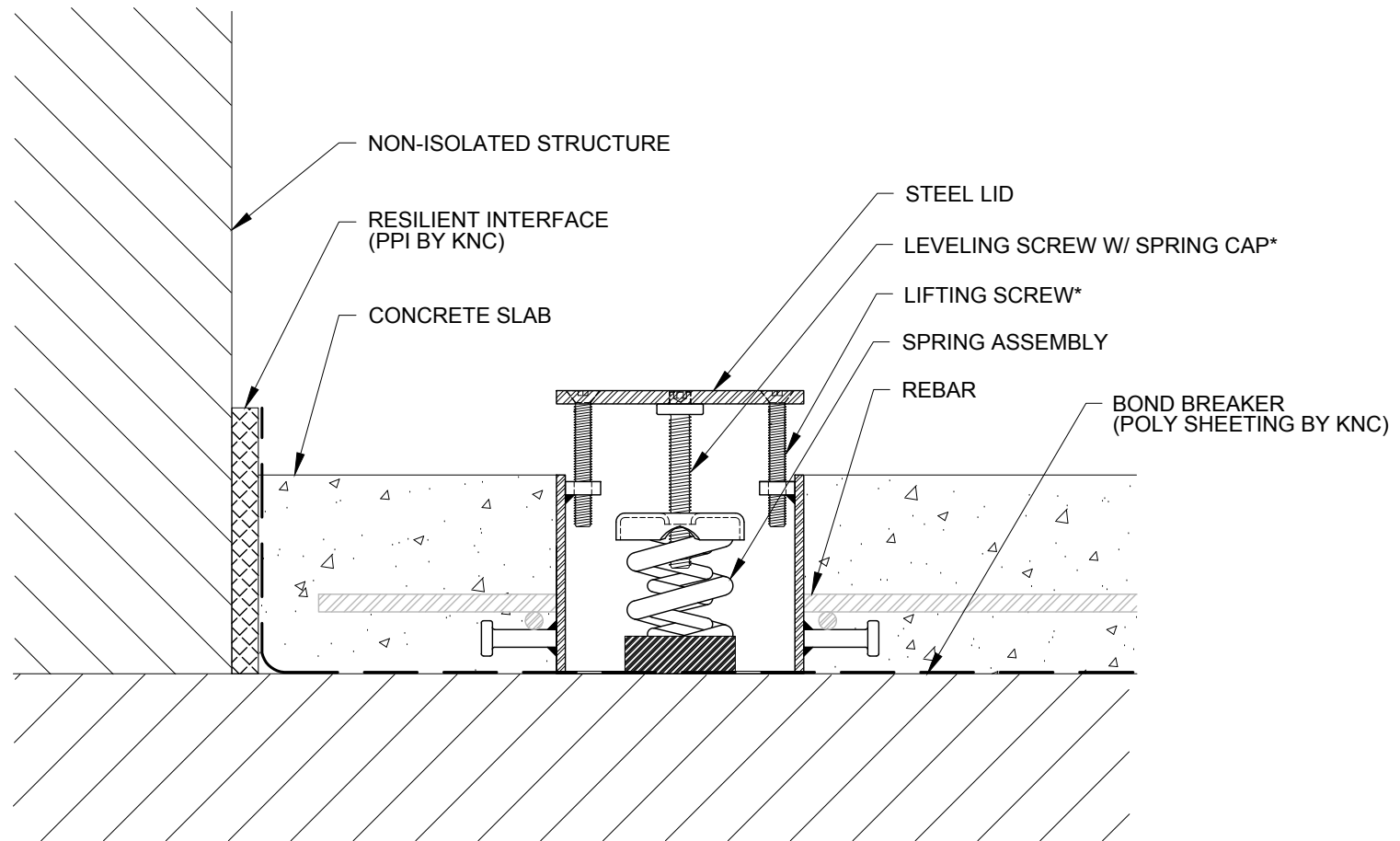


*APPLY HIGH PRESSURE LUBRICANT IN FIELD PRIOR TO LIFTING



DIMENSION FORMAT: IN [mm]

SCALE: N.T.S.



LSM ISOLATED SLAB:
SYSTEM DETAIL (BEFORE LIFTING)

Revised
6/14/2018

Drawing No.
AA001896

kineticsnoise.com/lsm