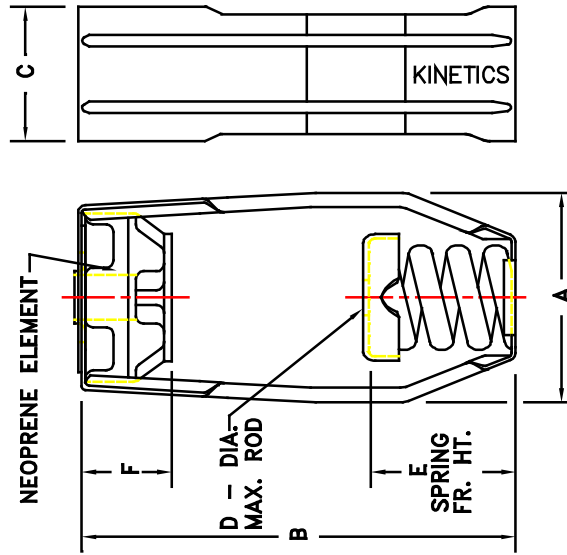


MODEL	SPRING COLOR	RATED LOAD LB/KG	RATED DEFLECTION IN/MM	DIMENSIONS IN INCHES					
				A	B	C	D	E	F
SRH-1-35	BLUE	35/16	1.62/41	3.69/94	7.38/187	2.25/57	0.63/16	3.19/81	1.61/41
SRH-1-70	GREEN	70/32	1.56/40	3.69/94	7.38/187	2.25/57	0.63/16	3.19/81	1.61/41
SRH-1-125	GRAY	125/57	1.57/40	3.69/94	7.38/187	2.25/57	0.63/16	3.19/81	1.61/41
SRH-1-245	BROWN	245/111	1.50/38	3.69/94	7.38/187	2.25/57	0.63/16	3.19/81	1.61/41
SRH-1-370	ORANGE	370/168	1.30/33	3.69/94	7.38/187	2.25/57	0.63/16	3.19/81	1.61/41
SRH-1-500	BEIGE	500/227	1.40/36	3.69/94	7.38/187	2.25/57	0.63/16	3.19/81	1.78/45
SRH-1-600	CHROME	600/273	1.35/34	3.69/94	7.38/187	2.25/57	0.63/16	3.19/81	1.78/45
SRH-1-700	BEIGE/WHITE	700/318	1.31/33	3.69/94	7.38/187	2.25/57	0.63/16	3.19/81	1.78/45
SRH-1-805	CHROME/WHITE	805/366	1.32/34	3.69/94	7.38/187	2.25/57	0.63/16	3.19/81	1.78/45

NOTE:  
ALL DIMENSIONS SHOWN IN INCHES AND MILLIMETERS.



SRH-1 ISOLATION HANGERS HAVE A MINIMUM Kx/Ky OF 1.0  
 SRH-1 ISOLATION HANGERS HAVE A TYPICAL OVERLOAD CAPACITY OF 50%  
 SRH-1 SPRING ELEMENTS ARE SAFE FOR SOLID LOADING  
 SRH-1 HANGER BRACKETS WILL CARRY (5) TIMES OVERLOAD WITHOUT FAILURE  
 SRH-1 HANGER BRACKETS WILL ALLOW 30° ROD MISALIGNMENT WITHOUT SHORT CIRCUITING EXCEPT AS NOTED \*  
 SRH-1 SPRING ELEMENTS AND BRACKETS ARE POWDER COATED. LOAD PLATES ARE BRIGHT ZINC PLATED.  
 SRH-1 ISOLATION HANGERS MARKED \* HAVE A NEOPRENE BOTTOM SPRING CAP WITH GROMMET.

TITLE		DRAWING NO.		S-03
MODEL SRH-1-35/805		REVISED BY		S-03.37-1A
LAST DATE REVISED		BB		
10/31/02				

## MODEL SRH 1-35/805 ISOLATOR

PAGE 1 OF 6



DUBLIN, OHIO, USA • MISSISSAUGA, ONTARIO, CANADA

Toll Free (USA only): 800-959-1229  
 International: 614-889-0480  
 Fax: 614-889-0540  
 World Wide Web: www.kineticsnoise.com  
 Email: sales@kineticsnoise.com

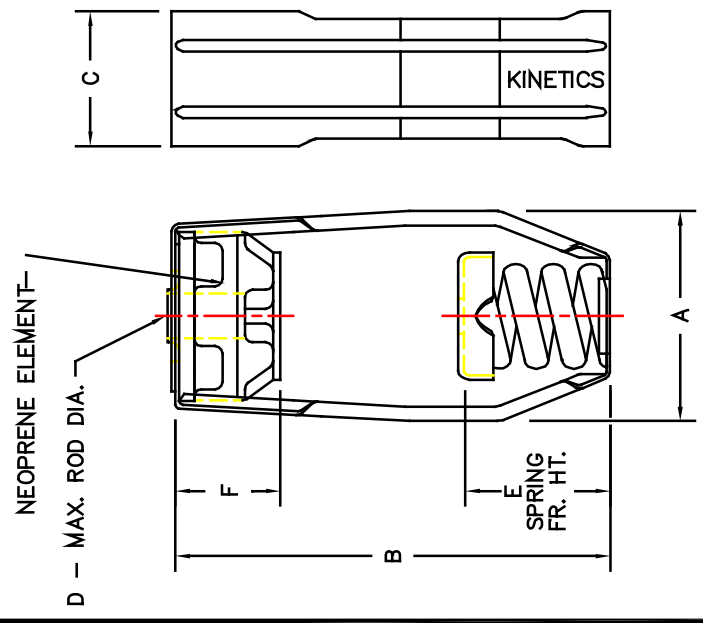
DOCUMENT:

R3.6



MODEL	SPRING COLOR	RATED LOAD LB/KG	RATED DEFLECTION IN/MM	DIMENSIONS IN INCHES					
				A	B	C	D	E	F
SRH-1-250	BLUE	250/114	2.14/54	5.58/142	8.59/218	3.63/92	.88/22	4.00/100	1.86/47
SRH-1-450	GREEN	450/205	1.94/49	5.58/142	8.59/218	3.63/92	.88/22	4.00/100	1.86/47
SRH-1-625	BLACK	625/284	1.79/45	5.58/142	8.59/218	3.63/92	.88/22	4.00/100	1.86/47
SRH-1-800	GRAY	800/364	1.62/41	5.58/142	8.59/218	3.63/92	.88/22	4.00/100	1.86/47
SRH-1-1000	RED	1000/455	1.50/38	5.58/142	8.59/218	3.63/92	.88/22	4.00/100	1.86/47

NOTE:  
ALL DIMENSIONS SHOWN IN INCHES AND MILLIMETERS.



SRH-1 ISOLATION HANGERS HAVE A MINIMUM K<sub>x</sub>/K<sub>y</sub> OF 1.4  
 SRH-1 SPRING ELEMENTS ARE SAFE FOR SOLID LOADING  
 SRH-1 HANGER BRACKETS WILL CARRY (5) TIMES OVERLOAD WITHOUT FAILURE  
 SRH-1 HANGER BRACKETS WILL ALLOW 30° ROD MISALIGNMENT WITHOUT SHORT CIRCUITING  
 SRH-1 SPRING ELEMENTS AND BRACKETS ARE POWDER COATED. LOAD PLATES ARE BRIGHT ZINC PLATED.

	TITLE	MODEL SRH-1 HANGER	LAST DATE REVISED	4/16/96	DRAWN BY	DW	DRAWING NO.	S-03.37-1B	S-DWG

**MODEL SRH 1-250/1000 ISOLATOR**

PAGE 2 OF 6

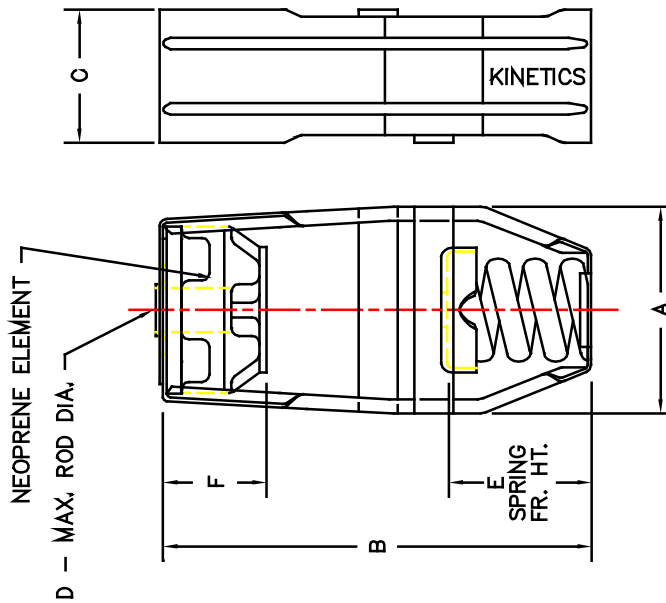
DUBLIN, OHIO, USA • MISSISSAUGA, ONTARIO, CANADA

Toll Free (USA only): 800-959-1229  
 International: 614-889-0480  
 Fax: 614-889-0540  
 World Wide Web: www.kineticsnoise.com  
 Email: sales@kineticsnoise.com

DOCUMENT:  
**R3.6**

NOTE:  
ALL DIMENSIONS SHOWN IN  
INCHES AND MILLIMETERS.

MODEL	SPRING COLOR	RATED LOAD LB/KG	RATED DEFLECTION IN/MM	DIMENSIONS IN INCHES					
				A IN/MM	B IN/MM	O IN/MM	D IN/MM	E IN/MM	F IN/MM
SRH-1-1250	BROWN	1250/568	1.28/33	5.58/142	8.59/218	3.63/92	.88/22	4.00/100	1.86/47
SRH-1-1700	ORANGE	1700/773	1.34/34	5.58/142	8.59/218	3.63/92	.88/22	4.00/100	1.86/47



SRH-1 ISOLATION HANGERS HAVE A MINIMUM  $K_x/K_y$  OF 1.2  
 SRH-1 SPRING ELEMENTS ARE SAFE FOR SOLID LOADING  
 SRH-1 HANGER BRACKETS WILL CARRY (5) TIMES OVERLOAD WITHOUT FAILURE  
 SRH-1 HANGER BRACKETS WILL ALLOW 30° ROD MISALIGNMENT WITHOUT SHORT CIRCUITING  
 SRH-1 SPRING ELEMENTS AND BRACKETS ARE POWDER COATED. LOAD PLATES ARE BRIGHT ZINC PLATED.



TITLE

MODEL SRH-1 HANGER

LAST DATE  
REVISED  
4/16/96

DRAWN BY  
DW

DRAWING NO.  
S-03.37-1C

DOCUMENT:  
R3.6



MODEL SRH 1-1250/1700 ISOLATOR

PAGE 3 OF 6

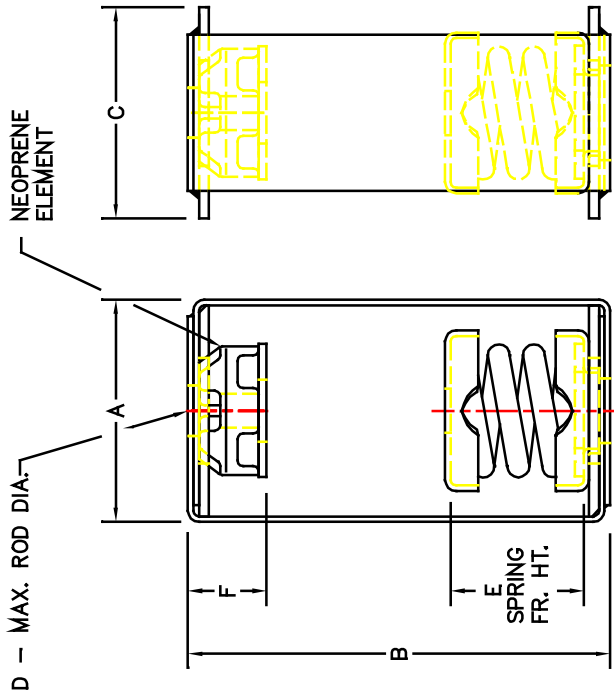


DUBLIN, OHIO, USA • MISSISSAUGA, ONTARIO, CANADA

Toll Free (USA only): 800-959-1229  
 International: 614-889-0480  
 Fax: 614-889-0540  
 World Wide Web: www.kineticsnoise.com  
 Email: sales@kineticsnoise.com

NOTE:  
ALL DIMENSIONS SHOWN IN  
INCHES AND MILLIMETERS.

MODEL	SPRING COLOR	RATED LOAD LB/KG	RATED DEFLECTION IN/MM	DIMENSIONS IN INCHES / MILLIMETERS					
				A IN/MM	B IN/MM	O IN/MM	D IN/MM	E IN/MM	F IN/MM
SRH-1-2200	ORANGE/GRAY	2200/998	1.36/32	5.00/127	9.50/241	4.75/121	.88/22	4.00/102	1.86/47
SRH-1-2465	BLUE	2465/1118	1.42/33	5.00/127	9.50/241	4.75/121	.88/22	4.00/102	1.86/47
SRH-1-2865	BLUE/GRAY	2865/1300	1.20/34	5.00/127	9.50/241	4.75/121	.88/22	4.00/102	1.86/47
SRH-1-3500	BLUE/BROWN	3500/1588	1.18/30	5.00/127	9.50/241	4.75/121	.88/22	4.00/102	1.86/47



SRH-1 ISOLATION HANGERS HAVE A MINIMUM  $K_x/K_y$  OF 1.0  
 SRH-1 SPRING ELEMENTS ARE SAFE FOR SOLID LOADING  
 SRH-1 HANGER BRACKETS WILL CARRY (5) TIMES OVERLOAD WITHOUT FAILURE  
 SRH-1 HANGER BRACKETS WILL ALLOW 30° ROD MISALIGNMENT WITHOUT SHORT CIRCUITING  
 SRH-1 SPRING ELEMENTS AND BRACKETS ARE POWDER COATED. LOAD PLATES ARE BRIGHT ZINC PLATED.



TITLE

MODEL SRH-1 HANGER

LAST DATE  
REVISED  
9/13/96

DRAWN BY  
DW

DRAWING NO.  
S-03.37-1D

## MODEL SRH 1-2200/3500 ISOLATOR

PAGE 4 OF 6



DUBLIN, OHIO, USA • MISSISSAUGA, ONTARIO, CANADA

Toll Free (USA only): 800-959-1229  
 International: 614-889-0480  
 Fax: 614-889-0540  
 World Wide Web: www.kineticsnoise.com  
 Email: sales@kineticsnoise.com

DOCUMENT:

R3.6

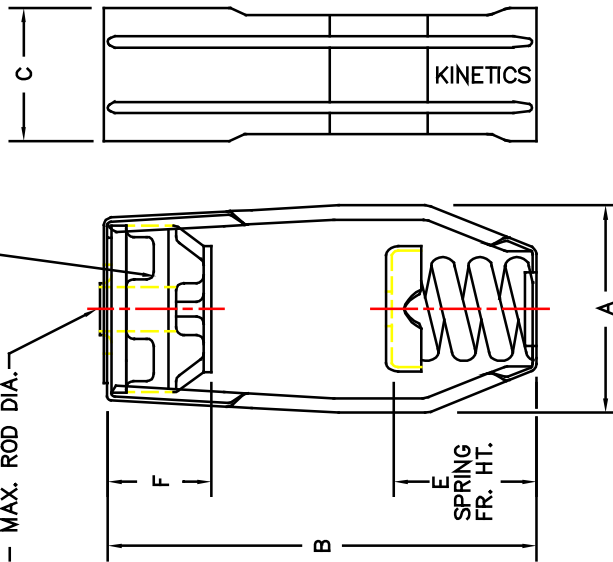


NOTE:  
ALL DIMENSIONS SHOWN IN  
INCHES AND MILLIMETERS.

MODEL	SPRING COLOR	RATED LOAD LB/KG	RATED DEFLECTION IN/MM	DIMENSIONS IN INCHES					
				A	B	C	D	E	F
SRH-2-260	BLUE	260/118	2.14/54	5.58/142	8.59/218	3.63/92	.88/22	4.00/100	1.86/47
SRH-2-465	GREEN	465/211	2.00/50	5.58/142	8.59/218	3.63/92	.88/22	4.00/100	1.86/47
SRH-2-720	BLACK	720/328	2.00/50	5.58/142	8.59/218	3.63/92	.88/22	4.00/100	1.86/47
SRH-2-850	WHITE	850/386	2.03/52	5.58/142	8.59/218	3.63/92	.88/22	4.25/108	1.86/47
SRH-2-1026	BEIGE	1026/466	2.00/50	5.58/142	8.59/218	3.63/92	.88/22	4.25/108	1.86/47
SRH-2-1200	CHROME	1200/546	2.03/52	5.58/142	8.59/218	3.63/92	.88/22	4.50/114	1.86/47

NEOPRENE ELEMENT

D- MAX. ROD DIA.



SRH-2 ISOLATION HANGERS HAVE A MINIMUM K<sub>x</sub>/K<sub>y</sub> OF 1.4  
 SRH-2 SPRING ELEMENTS ARE SAFE FOR SOLID LOADING  
 SRH-2 HANGER BRACKETS WILL CARRY (5) TIMES OVERLOAD WITHOUT FAILURE  
 SRH-2 HANGER BRACKETS WILL ALLOW 30° ROD MISALIGNMENT WITHOUT SHORT CIRCUITING  
 SRH-2 SPRING ELEMENTS AND BRACKETS ARE POWDER COATED. LOAD PLATES ARE  
 BRIGHT ZINC PLATED.

TITLE  
**KINETICS**  
*Noise Control*

MODEL SRH-2 HANGER

LAST DATE  
 REVISED  
**4/16/96**

DRAWN BY  
**DW**

DRAWING NO.  
**S-03.37-2BB**  
 S-DWG

## MODEL SRH 2-260/1200 ISOLATOR

PAGE 5 OF 6

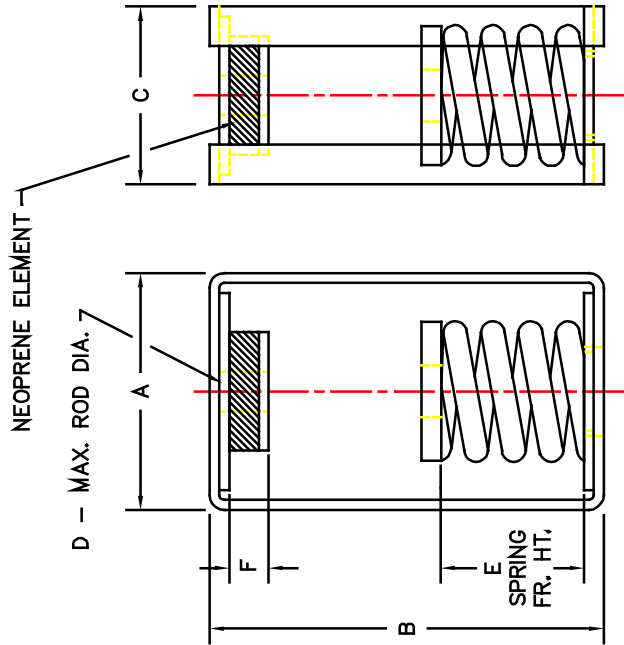


DUBLIN, OHIO, USA • MISSISSAUGA, ONTARIO, CANADA


Toll Free (USA only): 800-959-1229  
 International: 614-889-0480  
 Fax: 614-889-0540  
 World Wide Web: www.kineticsnoise.com  
 Email: sales@kineticsnoise.com

DOCUMENT:  
**R3.6**  
 VISCMA MEMBER

RATED LOAD POUNDS	SPRING COLOR	RATED DEFLECTION INCHES	DIMENSIONS IN INCHES					
			A	B	C	D	E	F
SRH-2-2000	ORANGE	2.11	6.00	12.00	6.00	1.00	7.00	1.25
SRH-2-2500	BLUE	2.12	6.00	12.00	6.00	1.00	7.00	1.25



SRH-2 ISOLATION HANGERS HAVE A MINIMUM  $K_x/K_y$  OF 1.4  
 SRH-2 SPRING ELEMENTS ARE SAFE FOR SOLID LOADING  
 SRH-2 HANGER BRACKETS WILL CARRY (5) TIMES OVERLOAD WITHOUT FAILURE  
 SRH-2 HANGER BRACKETS WILL ALLOW 30° ROD MISALIGNMENT WITHOUT SHORT CIRCUITING  
 SRH-2 SPRING ELEMENTS AND BRACKETS ARE PAINTED. LOAD PLATES ARE BRIGHT ZINC PLATED.

	TITLE	LAST DATE REVISED	REVISED BY	DRAWING NO.	S-03
	MODEL SRH-2 HANGER	04/16/96	DW	S-03.37-2C	

## MODEL SRH 2-2000/2500 ISOLATOR

PAGE 6 OF 6



DUBLIN, OHIO, USA • MISSISSAUGA, ONTARIO, CANADA

Toll Free (USA only): 800-959-1229  
 International: 614-889-0480  
 Fax: 614-889-0540  
 World Wide Web: [www.kineticsnoise.com](http://www.kineticsnoise.com)  
 Email: [sales@kineticsnoise.com](mailto:sales@kineticsnoise.com)

DOCUMENT:

R3.6



KINETICS™ Riser Design Manual