

# SFH 1" DEFLECTION ISOLATION HANGERS

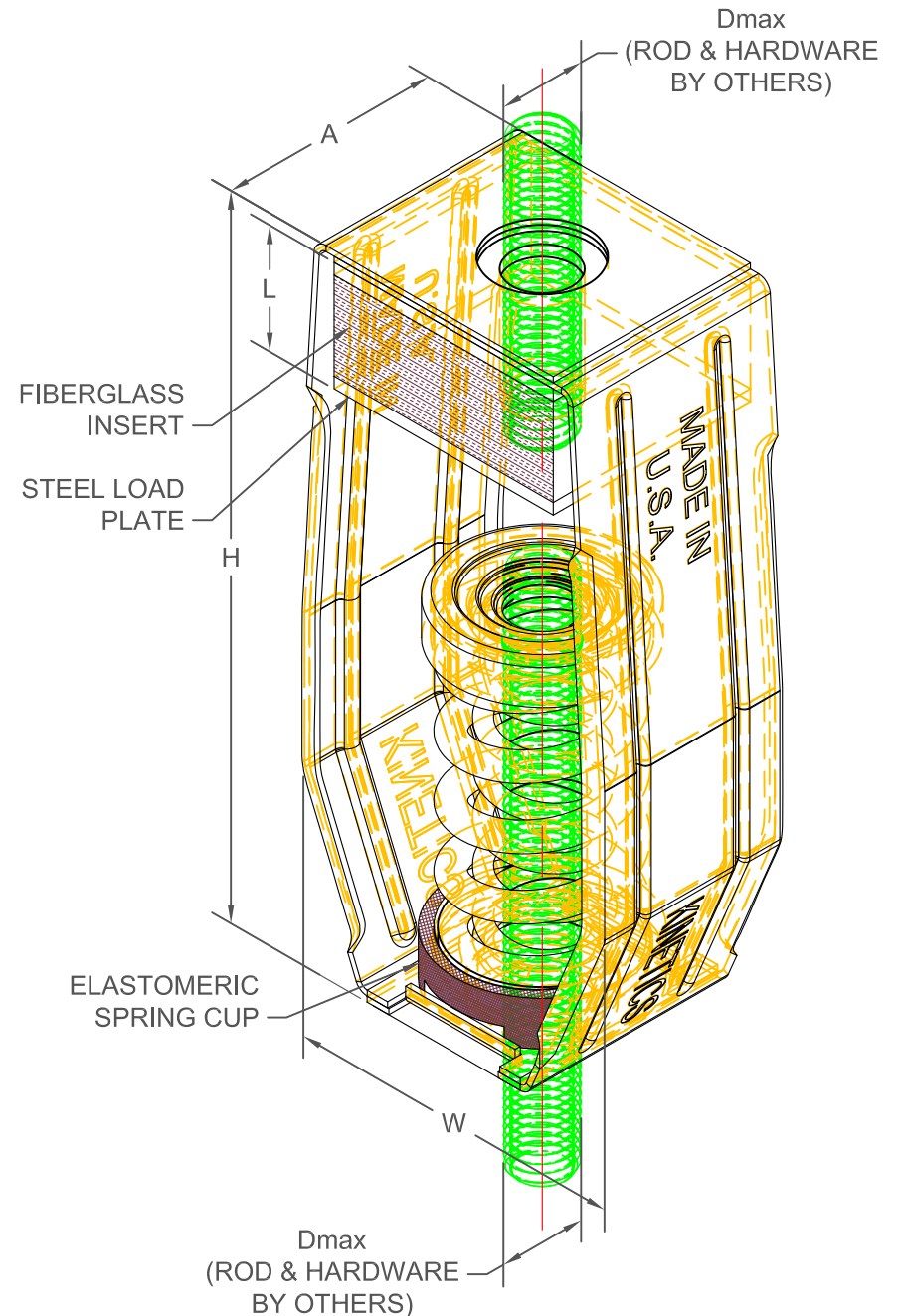
IP UNITS (INCHES AND POUNDS)

TYPE	L	H	W	A	D <sub>MAX</sub>
1-12/370	1.13	7.38	3.69	2.25	0.63
1-500/805	1.25	7.38	3.69	2.25	0.63

STANDARD RATINGS				SPRING COIL				FIBERGLASS INSERT DENSITY
TYPE	SIZE	LOAD	DEFL.	COLOR		FREE HT.	O.D.	
SFH	1-12	12	1.16	SILVER		3.19	1.75	E
SFH	1-18	18	1.21	YELLOW		3.19	1.75	E
SFH	1-30	30	1.26	PINK		3.19	1.75	E
SFH	1-35	35	1.72	BLUE		3.19	1.75	G
SFH	1-37	37	1.21	WHITE		3.19	1.75	G
SFH	1-70	70	1.63	GREEN		3.19	1.75	G
SFH	1-75	75	1.29	BLACK		3.19	1.75	G
SFH	1-125	125	1.57	GRAY		3.19	1.75	G
SFH	1-150	150	1.22	RED		3.19	1.75	L
SFH	1-245	245	1.46	BROWN		3.19	1.75	L
SFH	1-300	300	1.15	PURPLE		3.19	1.75	G
SFH	1-370	370	1.12	ORANGE		3.19	1.75	Q
SFH	1-500	500	1.07	BEIGE		3.19	1.75	R
SFH	1-600	600	1.10	CHROME		3.19	1.75	R
*SFH	1-700	700	1.08	BEIGE	WHITE	3.19	1.75	R
*SFH	1-805	805	1.11	CHROME	WHITE	3.19	1.75	R

## SPECIFICATIONS:

- SPRING ELEMENTS AND HOUSING ARE POWDER COATED,
- LOAD PLATES ARE BRIGHT ZINC PLATED.
- ISOLATION HANGERS HAVE A TYPICAL OVERLOAD OF 50%.
- ISOLATION HANGERS HAVE A MINIMUM Kx/Ky RATIO OF 1.0.
- SPRING ELEMENTS ARE SAFE AT SOLID LOADING.
- HANGER BRACKETS WILL CARRY AT LEAST (5) TIMES OVERLOAD WITHOUT FAILURE.
- HANGER BRACKETS WILL ALLOW 30° ROD MISALIGNMENT WITHOUT SHORT CIRCUITING EXCEPT AS NOTED.\*
- ISOLATION HANGERS INCORPORATE "NO SHORT" STEP SPRING CAP.



KINETICS NOISE CONTROL, INC  
 6300 IRELAN PL,  
 DUBLIN, OH 43017 USA  
 Ph: 614 889-0480, Fax: 614 889-0540  
 www.kineticsnoise.com

Model:  
**SFH-1-12/805**

By: **JMJ**  
 Date: **03/10/03**  
 Revised: **11/07/22 / BB**

Drawing No:  
**S-03.35-11**