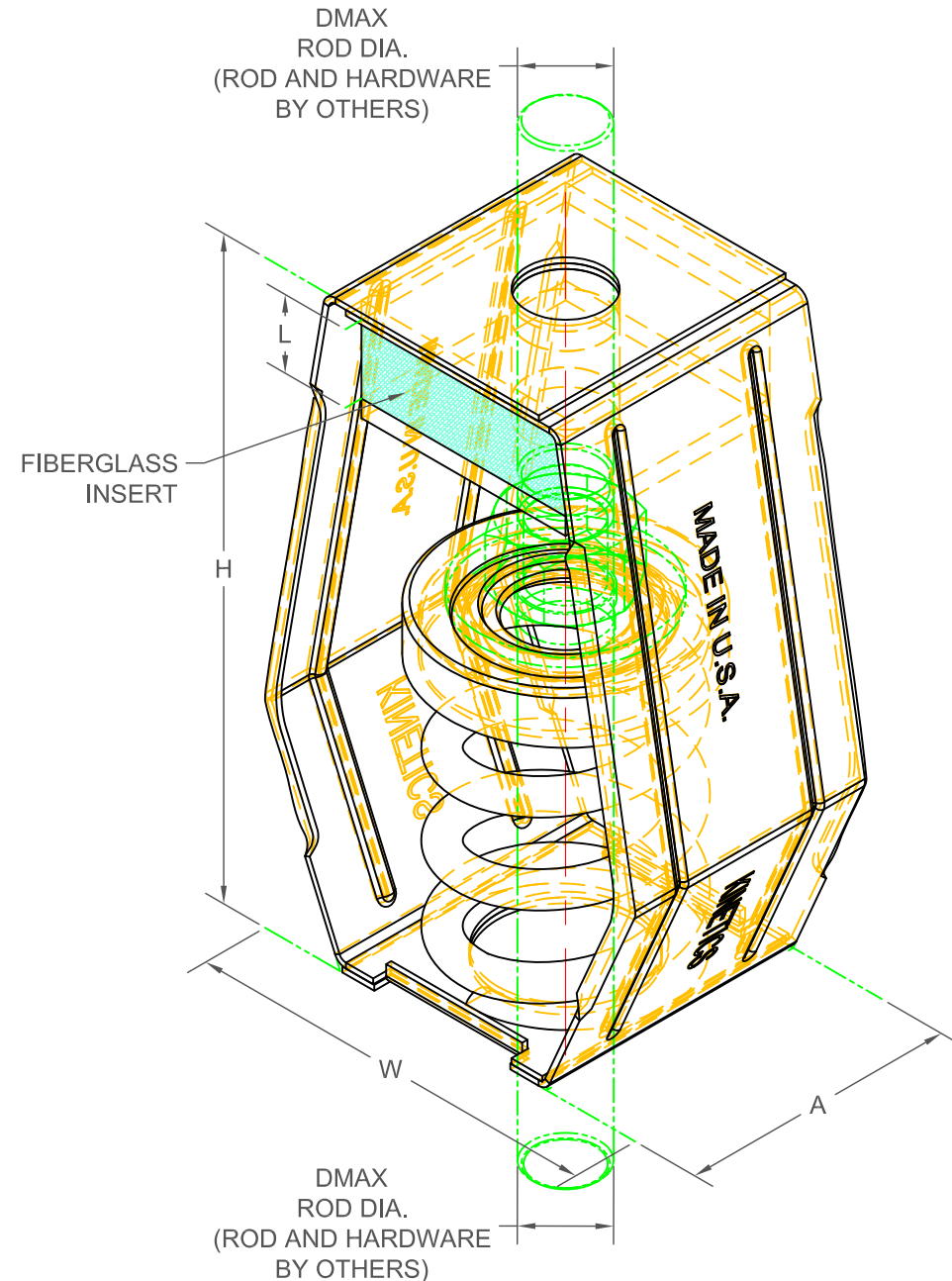


SFH 1" DEFLECTION ISOLATION HANGERS

IP UNITS (INCHES AND POUNDS)

TYPE	L	H	W	A	D _{MAX}
1-50/870 (1000)	1.50	8.59	5.58	3.63	1.00

STANDARD RATINGS				SPRING COIL			FIBERGLASS INSERT
TYPE	SIZE	LOAD	DEFL.	COLOR	FREE HT.	O.D.	DENSITY
SFH	1-50	50	1.20	BEIGE	4.20	3.00	G
SFH	1-100	100	1.26	CHROME	4.20	3.00	G
SFH	1-140 (250)	140	1.08	BLUE	4.20	3.00	Q
SFH	1-293 (450)	293	1.12	GREEN	4.20	3.00	Q
SFH	1-434 (625)	434	1.14	BLACK	4.20	3.00	Q
SFH	1-611 (800)	611	1.17	GRAY	4.20	3.00	Q
SFH	1-870 (1000)	870	1.08	RED	4.20	3.00	R



SPECIFICATIONS:

- SPRING ELEMENTS AND BRACKETS ARE POWDER COATED.
- LOAD PLATES ARE BRIGHT ZINC PLATED.
- ISOLATION HANGERS HAVE A TYPICAL OVERLOAD OF 50%.
- ISOLATION HANGERS HAVE A MINIMUM K_x/K_y RATIO OF 1.4.
- SPRING ELEMENTS ARE SAFE AT SOLID LOADING.
- HANGER BRACKETS WILL CARRY (5) TIMES OVERLOAD WITHOUT FAILURE.
- HANGER BRACKETS WILL ALLOW 30° ROD MISALIGNMENT WITHOUT SHORT CIRCUITING.
- ISOLATION HANGERS INCORPORATE "NO SHORT" STEP CAP.



KINETICS NOISE CONTROL, INC
 6300 IRELAN PL,
 DUBLIN, OH 43017 USA
 Ph: 614 889-0480, Fax: 614 889-0540
 www.kineticsnoise.com

Model:
SFH-1-50/870

By: **JMJ**
 Date: **10/24/03**
 Revised: **11/07/22 / BB**

Drawing No:
S-03.35-12