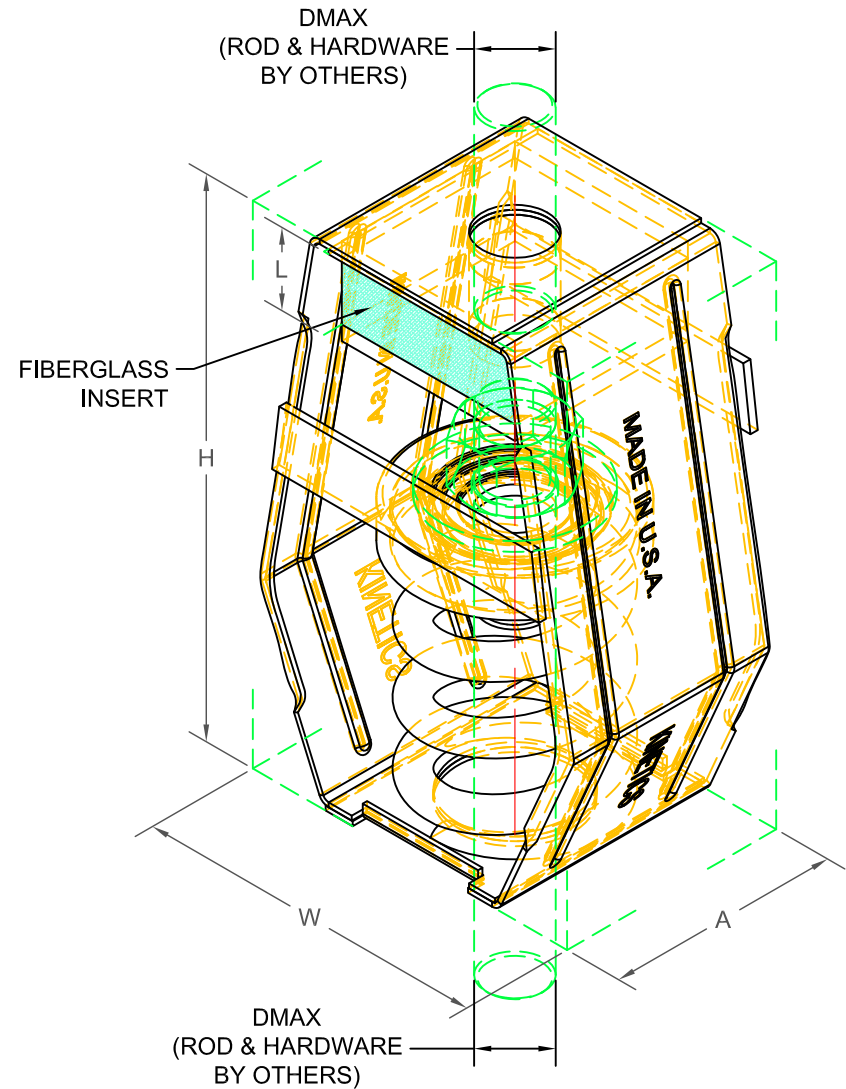


SFH 1" DEFLECTION ISOLATION HANGERS
IP UNITS (INCHES AND POUNDS)

TYPE	L	H	W	A	D _{MAX}
1-1147 (1250)/1790 (1700)	1.50	8.59	5.58	3.63	1.00

STANDARD RATINGS				SPRING COIL			FIBERGLASS INSERT
TYPE	SIZE	LOAD	DEFL.	COLOR	FREE HT.	O.D.	DENSITY
SFH	1-1147 (1250)	1147	1.09	BROWN	4.20	3.00	R
SFH	1-1790 (1700)	1790	1.11	ORANGE	4.20	3.00	R



SPECIFICATIONS:

- SPRING ELEMENTS AND BRACKETS ARE POWDER COATED.
- LOAD PLATES ARE BRIGHT ZINC PLATED.
- ISOLATION HANGERS HAVE A TYPICAL OVERLOAD OF 50%.
- ISOLATION HANGERS HAVE A MINIMUM K_x/K_y RATIO OF 1.2.
- SPRING ELEMENTS ARE SAFE AT SOLID LOADING.
- HANGER BRACKETS WILL CARRY (5) TIMES OVERLOAD WITHOUT FAILURE.
- HANGER BRACKETS WILL ALLOW 30° ROD MISALIGNMENT WITHOUT SHORT CIRCUITING.
- ISOLATION HANGERS INCORPORATE "NO SHORT" STEP CAP.



KINETICS NOISE CONTROL, INC
6300 IRELAN PL,
DUBLIN, OH 43017 USA
Ph: 614 889-0480, Fax: 614 889-0540
www.kineticsnoise.com

Model:
**SFH-1-
1147/1790**

By: **JMJ**
Date: **10/24/03**
Revised: **11/07/22 / BB**

Drawing No:
S-03.35-13