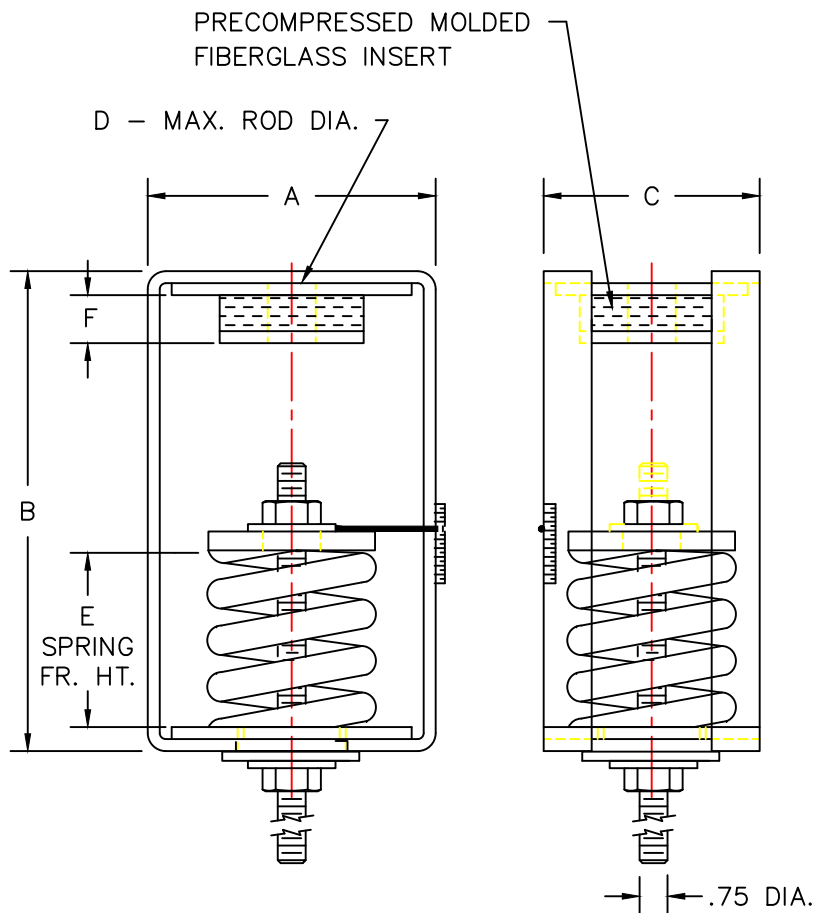
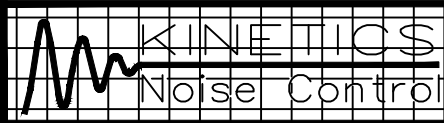


MODEL	RATED LOAD LB/KG	SPRING COLOR	RATED DEFLECTION IN/MM	DIMENSIONS IN INCHES/MILLIMETERS					
				A IN/MM	B IN/MM	C IN/MM	D IN/MM	E IN/MM	F IN/MM
SFPH-2-2750	2750/1245	BLUE/BLUE	2.09/53	6.00/152	12.00/305	6.00/152	1.00/26	7.00/178	1.25/32
SFPH-2-3025	3025/1375	BLU/GRN	2.11/54	6.00/152	12.00/305	6.00/152	1.00/26	7.00/178	1.25/32
SFPH-2-3250	3250/1475	BLU/BLK	2.12/54	6.00/152	12.00/305	6.00/152	1.00/26	7.00/178	1.25/32



- SFPH-2 ISOLATION HANGERS HAVE A MINIMUM K_x/K_y OF 1.3
- SFPH-2 SPRING ELEMENTS ARE SAFE FOR SOLID LOADING
- SFPH-2 HANGER BRACKETS WILL CARRY (5) TIMES OVERLOAD WITHOUT FAILURE
- SFPH-2 HANGER BRACKETS WILL ALLOW 30° ROD MISALIGNMENT WITHOUT SHORT CIRCUITING
- SFPH-2 SPRING ELEMENTS AND BRACKETS ARE PAINTED

NOTE:
ALL THREADED MEMBERS ARE AMERICAN STANDARD.



TITLE
MODEL SFPH-2 HANGER

LAST DATE
REVISED
9/20/96

DRAWN BY
DCB

DRAWING NO.
S-03.45-2D