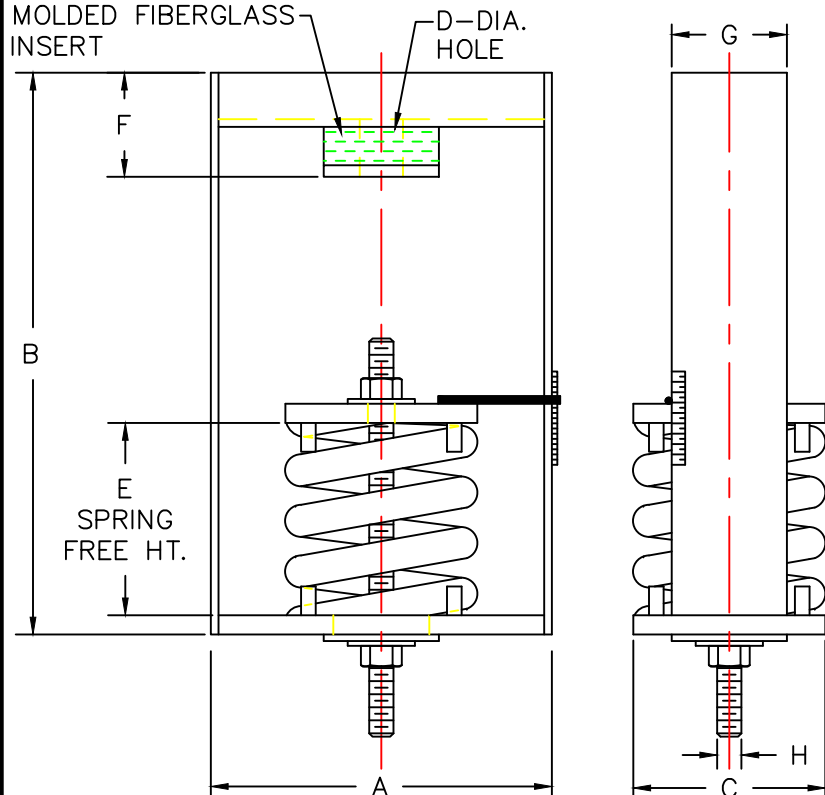


MODEL	RATED LOAD LB/KG	SPRING COLOR	RATED DEFLECTION IN/MM	DIMENSIONS IN INCHES/MILLIMETERS						
				A IN/MM	B IN/MM	C IN/MM	D IN/MM	E IN/MM	F IN/MM	G IN/MM
SFPH-4-2250	2250/1023	BEIGE	4.05/103	13.50/343	18.50/470	8.00/203	1.13/29	11.50/292	3.17/81	6.00/152
SFPH-4-2500	2500/1136	BEIGE/BLUE	4.06/103	13.50/343	18.50/470	8.00/203	1.13/29	11.50/292	3.17/81	6.00/152
SFPH-4-2750	2750/1250	BEIGE/GRN	4.06/103	13.50/343	18.50/470	8.00/203	1.13/29	11.50/292	3.17/81	6.00/152
SFPH-4-3000	3000/1364	BEIGE/BLK	4.07/103	13.50/343	18.50/470	8.00/203	1.13/29	11.50/292	3.17/81	6.00/152
SFPH-4-3250	3250/1475	BEIGE/RED	4.08/104	13.50/343	18.50/470	8.00/203	1.13/29	11.50/292	3.17/81	6.00/152
SFPH-4-3500	3500/1588	BEIGE/BRN	4.08/104	13.50/343	18.50/470	8.00/203	1.13/29	11.50/292	3.17/81	6.00/152
SFPH-4-3850	3850/1747	BEIGE/ORG	4.09/104	13.50/343	18.50/470	8.00/203	1.13/29	11.50/292	3.17/81	6.00/152

PRECOMPRESSED
MOLDED FIBERGLASS
INSERT



- SFPH-4 ISOLATION HANGERS HAVE A MINIMUM K_x/K_y OF 1.5
- SFPH-4 ISOLATION HANGERS HAVE A TYPICAL OVERLOAD CAPACITY OF 50%
- SFPH-4 SPRING ELEMENTS ARE SAFE FOR SOLID LOADING
- SFPH-4 HANGER BRACKETS WILL CARRY (5) TIMES OVERLOAD WITHOUT FAILURE
- SFPH-4 HANGER BRACKETS WILL ALLOW 30° ROD MISALIGNMENT WITHOUT SHORT CIRCUITING
- SFPH-4 SPRING ELEMENTS AND BRACKETS ARE PAINTED
- SFPH-4 PRECOMPRESSED MOLDED FIBERGLASS INSERT IS DESIGNED FOR .06/.18 DEFLECTION AT MAXIMUM LOAD
- SFPH-4 RATED DEFLECTION IS SPRING DEFLECTION PLUS PRORATED FIBERGLASS DEFLECTION

NOTE:
ALL THREADED MEMBERS ARE AMERICAN STANDARD.



TITLE
MODEL SFPH-4 HANGER

LAST DATE
REVISED
9/24/96

DRAWN BY
DCB

DRAWING NO.
S-03.45-4D