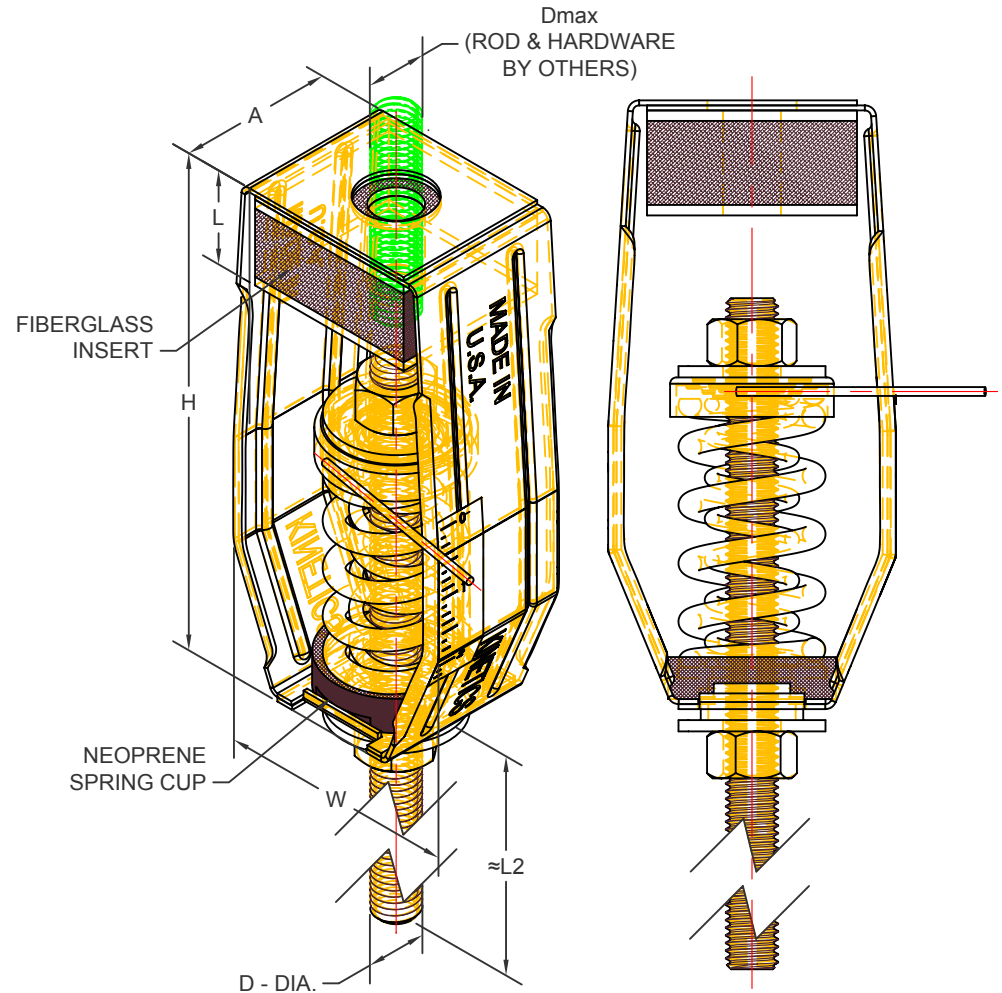


SFPH 1" DEFLECTION ISOLATION HANGERS

IP UNITS (INCHES AND POUNDS)

TYPE	L	L2	H	W	A	D	D _{MAX}
1-35/370	1.13	7.50	7.38	3.69	2.25	0.50	0.63
1-500/805	1.25	7.00	7.38	3.69	2.25	0.63	0.63

STANDARD RATINGS				SPRING COIL				FIBERGLASS INSERT DENSITY
				COLOR		FREE HT.	O.D.	
TYPE	SIZE	LOAD	DEFL.	OUTER	INNER			
SFPH	1-35	35	1.72	BLUE		3.19	1.75	G
SFPH	1-70	70	1.63	GREEN		3.19	1.75	G
SFPH	1-125	125	1.57	GRAY		3.19	1.75	G
SFPH	1-245	245	1.46	BROWN		3.19	1.75	L
SFPH	1-370	370	1.12	ORANGE		3.19	1.75	Q
SFPH	1-500	500	1.07	BEIGE		3.19	1.75	R
SFPH	1-600	600	1.08	CHROME		3.19	1.75	R
*SFPH	1-700	700	1.08	BEIGE	WHITE	3.19	1.75	R
*SFPH	1-805	805	1.10	CHROME	WHITE	3.19	1.75	R



SPECIFICATIONS:

- SPRING ELEMENTS AND BRACKETS ARE POWDER COATED.
- LOAD PLATES ARE BRIGHT ZINC PLATED.
- ISOLATION HANGERS HAVE A TYPICAL OVERLOAD OF 50%.
- ISOLATION HANGERS HAVE A MINIMUM K_x/K_y RATIO OF 1.0.
- SPRING ELEMENTS ARE SAFE AT SOLID LOADING.
- HANGER BRACKETS WILL CARRY AT LEAST (5) TIMES OVERLOAD WITHOUT FAILURE.
- HANGER BRACKETS WILL ALLOW 30° ROD MISALIGNMENT WITHOUT SHORT CIRCUITING, EXCEPT AS NOTED. (*)
- "NO SHORT" STEP CAP.



KINETICS NOISE CONTROL, INC
 6300 IRELAN PL,
 DUBLIN, OH 43017 USA
 Ph: 614 889-0480, Fax: 614 889-0540
 www.kineticsnoise.com

Model:
SFPH-1-35/805

By: BB
 Date: 09/05/14
 Revised: /

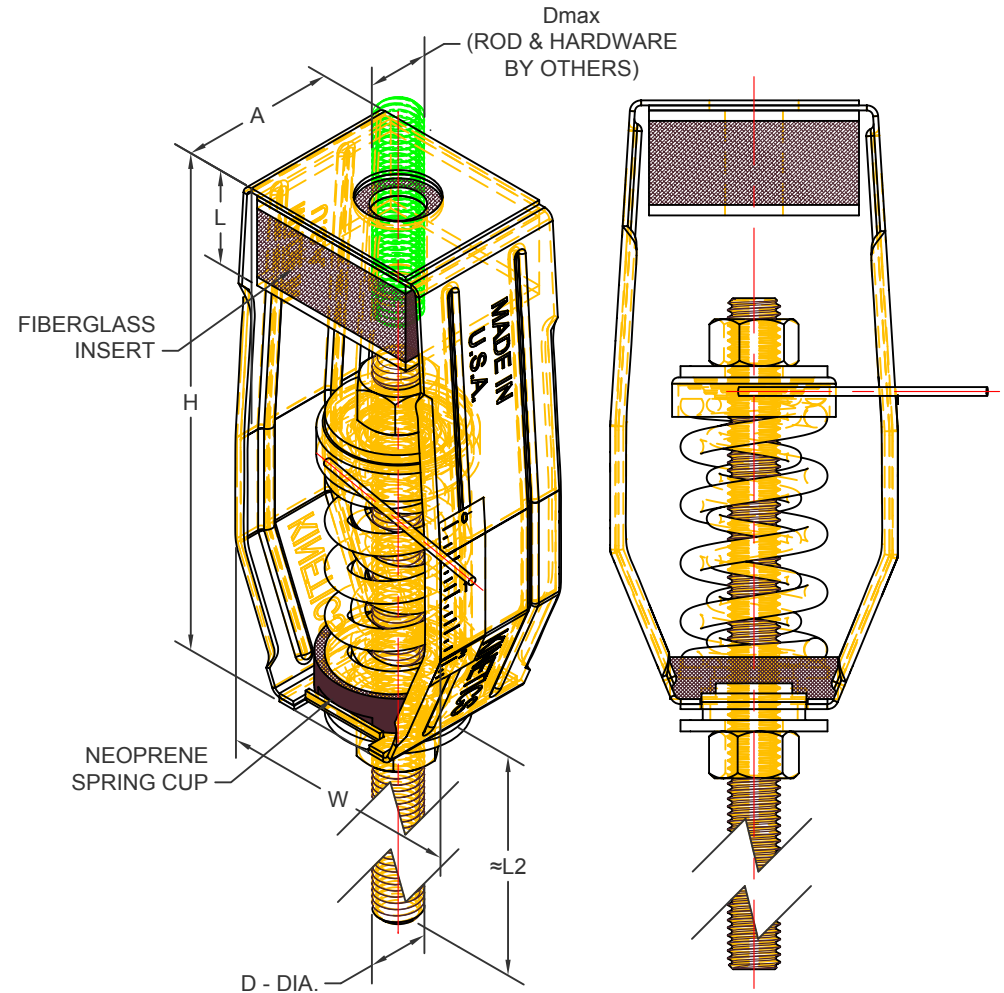
Drawing No:
S-03.45-11

SFPH 25 mm DEFLECTION ISOLATION HANGERS

S-I UNITS (mm AND kg)

TYPE	L	L2	H	W	A	D	D _{MAX}
1-35/370	29	191	187	94	57	13	16
1-500/805	32	178	187	94	57	16	16

STANDARD RATINGS				SPRING COIL				FIBERGLASS INSERT DENSITY
TYPE	SIZE	LOAD	DEFL.	COLOR		FREE HT.	O.D.	
SFPH	1-35	16	44	BLUE		81	44	G
SFPH	1-70	32	41	GREEN		81	44	G
SFPH	1-125	57	40	GRAY		81	44	G
SFPH	1-245	111	37	BROWN		81	44	L
SFPH	1-370	168	28	ORANGE		81	44	Q
SFPH	1-500	227	27	BEIGE		81	44	R
SFPH	1-600	272	27	CHROME		81	44	R
*SFPH	1-700	318	28	BEIGE	WHITE	81	44	R
*SFPH	1-805	365	28	CHROME	WHITE	81	44	R



SPECIFICATIONS:

- SPRING ELEMENTS AND BRACKETS ARE POWDER COATED.
- LOAD PLATES ARE BRIGHT ZINC PLATED.
- ISOLATION HANGERS HAVE A TYPICAL OVERLOAD OF 50%.
- ISOLATION HANGERS HAVE A MINIMUM K_x/K_y RATIO OF 1.0.
- SPRING ELEMENTS ARE SAFE AT SOLID LOADING.
- HANGER BRACKETS WILL CARRY AT LEAST (5) TIMES OVERLOAD WITHOUT FAILURE.
- HANGER BRACKETS WILL ALLOW 30° ROD MISALIGNMENT WITHOUT SHORT CIRCUITING, EXCEPT AS NOTED. (*)
- "NO SHORT" STEP CAP.



KINETICS NOISE CONTROL, INC
6300 IRELAN PL,
DUBLIN, OH 43017 USA
Ph: 614 889-0480, Fax: 614 889-0540
www.kineticsnoise.com

Model:
SFPH-1-
35/805

By: BB
Date: 09/05/14
Revised: /

Drawing No:
S-03.45-11
METRIC