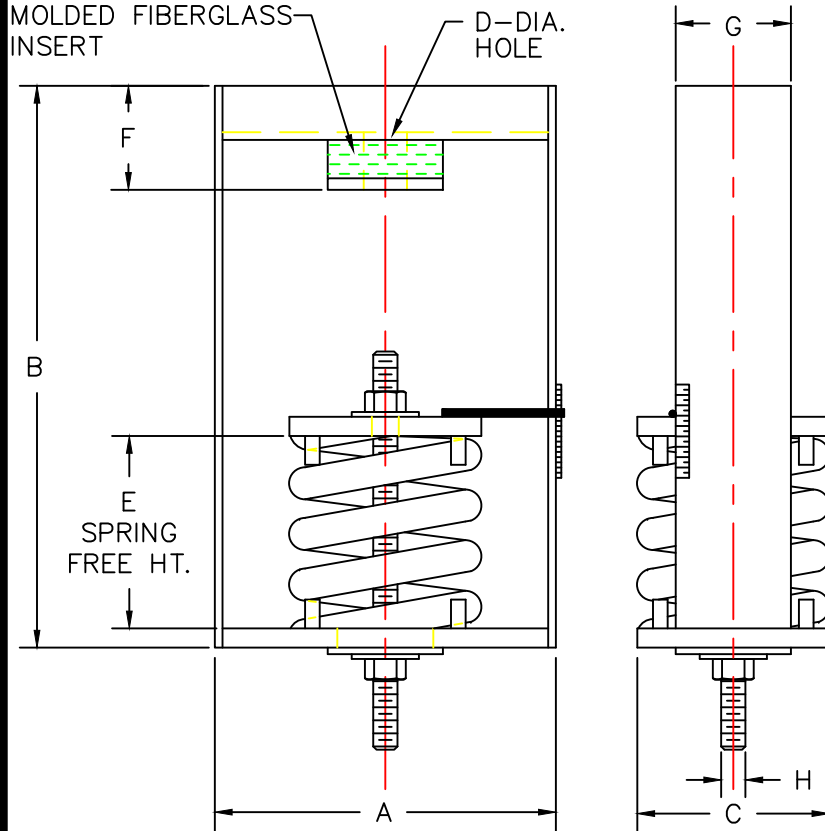


MODEL	RATED LOAD LB/KG	SPRING COLOR	RATED DEFLECTION IN/MM	DIMENSIONS IN INCHES/MILLIMETERS						
				A IN/MM	B IN/MM	C IN/MM	D IN/MM	E IN/MM	F IN/MM	G IN/MM
SFPH-4-100	100/46	GRAY	4.06/103	9.38/238	16.00/406	6.00/152	1.13/29	10.00/254	2.66/68	4.00/102
SFPH-4-250	250/114	BLUE	4.11/104	9.38/238	16.00/406	6.00/152	1.13/29	10.00/254	2.66/68	4.00/102
SFPH-4-500	500/227	GREEN	4.15/105	9.38/238	16.00/406	6.00/152	1.13/29	10.00/254	2.66/68	4.00/102
SFPH-4-750	750/341	BLACK	4.17/106	9.38/238	16.00/406	6.00/152	1.13/29	10.00/254	2.66/68	4.00/102
SFPH-4-1000	1000/455	RED	4.18/106	9.38/238	16.00/406	6.00/152	1.13/29	10.00/254	2.66/68	4.00/102
SFPH-4-1250	1250/568	BROWN	4.19/106	9.38/238	16.00/406	6.00/152	1.13/29	10.00/254	2.66/68	4.00/102
SFPH-4-1600	1600/727	ORANGE	4.25/108	9.38/238	16.00/406	6.00/152	1.13/29	10.00/254	2.66/68	4.00/102

PRECOMPRESSED
MOLDED FIBERGLASS
INSERT



- SFPH-4 ISOLATION HANGERS HAVE A MINIMUM K_x/K_y OF 1.2
- SFPH-4 ISOLATION HANGERS HAVE A TYPICAL OVERLOAD CAPACITY OF 50%
- SFPH-4 SPRING ELEMENTS ARE SAFE FOR SOLID LOADING
- SFPH-4 HANGER BRACKETS WILL CARRY (5) TIMES OVERLOAD WITHOUT FAILURE
- SFPH-4 HANGER BRACKETS WILL ALLOW 30° ROD MISALIGNMENT WITHOUT SHORT CIRCUITING
- SFPH-4 SPRING ELEMENTS AND BRACKETS ARE PAINTED
- SFPH-4 PRECOMPRESSED MOLDED FIBERGLASS INSERT IS DESIGNED FOR .06/.18 DEFLECTION AT MAXIMUM LOAD
- SFPH-4 RATED DEFLECTION IS SPRING DEFLECTION PLUS PRORATED FIBERGLASS DEFLECTION

NOTE:
ALL THREADED MEMBERS ARE AMERICAN STANDARD.



TITLE
MODEL SFPH-4 HANGER

LAST DATE
REVISED
9/20/96

DRAWN BY
DCB

DRAWING NO.
S-03.45-4C