

SH 1" DEFLECTION ISOLATION HANGERS

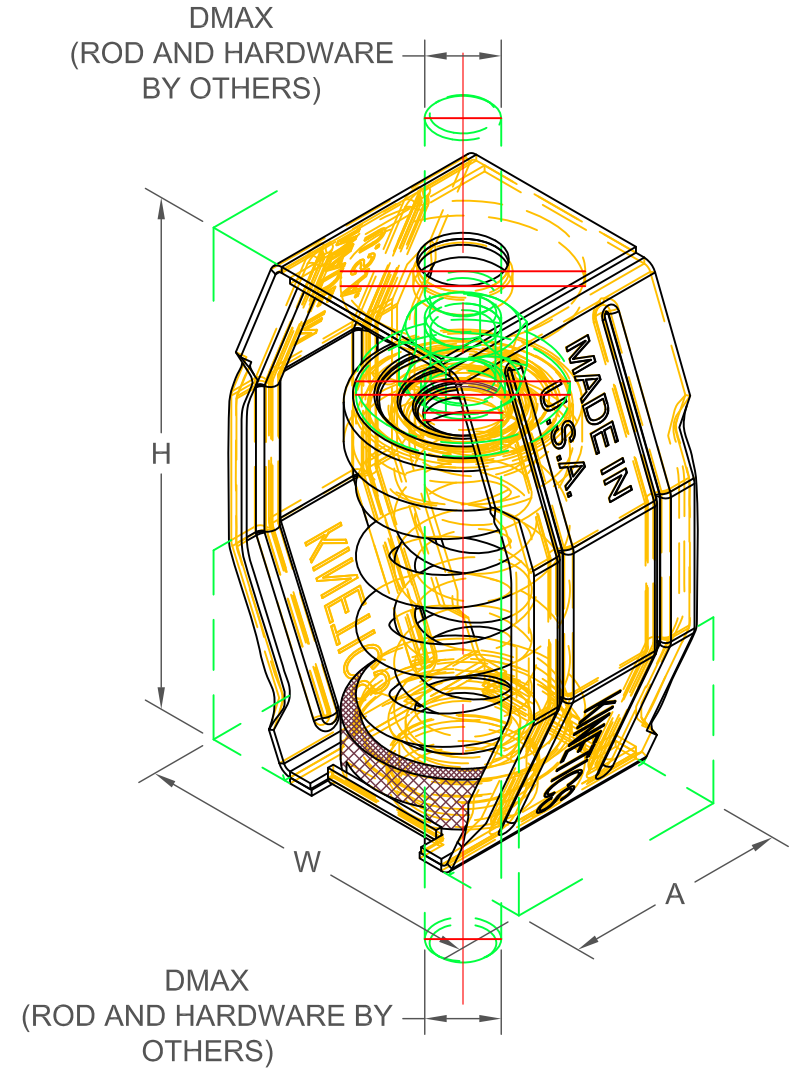
IP UNITS (INCHES AND POUNDS)

TYPE	H	W	A	D _{MAX}
1-12/370	5.25	3.69	2.25	0.63
1-500/600	5.25	3.69	2.25	0.63
1-700/805	5.25	3.69	2.25	0.63

STANDARD RATINGS				SPRING COIL			
TYPE	SIZE	LOAD	DEFL.	COLOR		FREE	O.D.
				OUTER	INNER	HT.	
SH	1-12	12	1.00	SILVER		3.19	1.75
SH	1-18	18	1.00	YELLOW		3.19	1.75
SH	1-30	30	1.00	PINK		3.19	1.75
SH	1-35	35	1.52	BLUE		3.19	1.75
SH	1-37	37	1.00	WHITE		3.19	1.75
SH	1-70	70	1.36	GREEN		3.19	1.75
SH	1-75	75	1.01	BLACK		3.19	1.75
SH	1-125	125	1.23	GRAY		3.19	1.75
SH	1-150	150	1.00	RED		3.19	1.75
SH	1-245	245	1.19	BROWN		3.19	1.75
SH	1-300	300	1.00	PURPLE		3.19	1.75
SH	1-370	370	0.96	ORANGE		3.19	1.75
SH	1-500	500	1.00	BEIGE		3.19	1.75
SH	1-600	600	1.02	CHROME		3.19	1.75
*SH	1-700	700	1.00	BEIGE	WHITE	3.19	1.75
*SH	1-805	805	1.02	CHROME	WHITE	3.19	1.75

SPECIFICATIONS:

- SPRING ELEMENTS AND BRACKETS ARE POWDER COATED.
- LOAD PLATES ARE BRIGHT ZINC PLATED.
- ISOLATION HANGERS HAVE A TYPICAL OVERLOAD OF 50%.
- ISOLATION HANGERS HAVE A MINIMUM Kx/Ky RATIO OF 1.0.
- SPRING ELEMENTS ARE SAFE AT SOLID LOADING.
- HANGER BRACKETS WILL CARRY (5) TIMES OVERLOAD WITHOUT FAILURE.
- HANGER BRACKETS WILL ALLOW 30° ROD MISALIGNMENT WITHOUT SHORT CIRCUITING, EXCEPT AS NOTED (*).
- "NO SHORT" STEP CAP.



KINETICS NOISE CONTROL, INC
 6300 IRELAN PL,
 DUBLIN, OH 43017 USA
 Ph: 614 889-0480, Fax: 614 889-0540
 www.kineticsnoise.com

Model:
 SH-1-12/805

By: B. LIVELY
 Date: 12/07/05
 Revised: 11/07/22 / BB

Drawing No:
 S-03-36.11