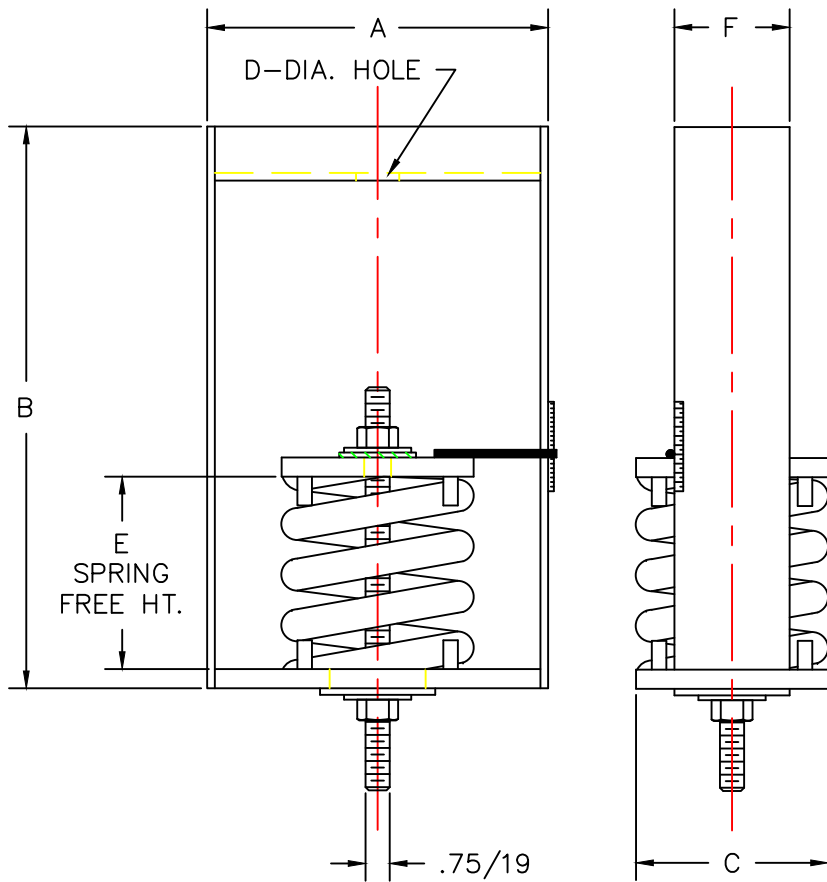


MODEL	SPRING COLOR	RATED LOAD LB/KG	RATED DEFLECTION IN/MM	DIMENSIONS IN INCHES / MILLIMETERS					
				A	B	C	D	E	F
SPH-4-2250	BEIGE	2250/1023	4.00/102	13.5/343	18.5/470	8.00/203	1.25/32	11.5/292	6.00/152
SPH-4-2500	BEIGE/BLU	2500/1136	4.00/102	13.5/343	18.5/470	8.00/203	1.25/32	11.5/292	6.00/152
SPH-4-2750	BEIGE/GRN	2750/1250	4.00/102	13.5/343	18.5/470	8.00/203	1.25/32	11.5/292	6.00/152
SPH-4-3000	BEIGE/BLK	3000/1364	4.00/102	13.5/343	18.5/470	8.00/203	1.25/32	11.5/292	6.00/152
SPH-4-3250	BEIGE/RED	3250/1475	4.00/102	13.5/343	18.5/470	8.00/203	1.25/32	11.5/292	6.00/152
SPH-4-3500	BEIGE/BRN	3500/1588	4.00/102	13.5/343	18.5/470	8.00/203	1.25/32	11.5/292	6.00/152
SPH-4-3850	BEIGE/ORG	3850/1747	4.00/102	13.5/343	18.5/470	8.00/203	1.25/32	11.5/292	6.00/152



- SPH-4 ISOLATION HANGERS HAVE A MINIMUM K_x/K_y OF 1.5
- SPH-4 ISOLATION HANGERS HAVE A TYPICAL OVERLOAD CAPACITY OF 50%
- SPH-4 SPRING ELEMENTS ARE SAFE FOR SOLID LOADING
- SPH-4 HANGER BRACKETS WILL CARRY (5) TIMES OVERLOAD WITHOUT FAILURE
- SPH-4 HANGER BRACKETS WILL ALLOW 30° ROD MISALIGNMENT WITHOUT SHORT CIRCUITING
- SPH-4 SPRING ELEMENTS AND BRACKETS ARE PAINTED

NOTE:
ALL THREADED MEMBERS ARE AMERICAN STANDARD.



TITLE
MODEL SPH-4 HANGER

LAST DATE REVISED
09/27/96

DRAWN BY
D. DRAKE

DRAWING NO.
S-03.46-4D