

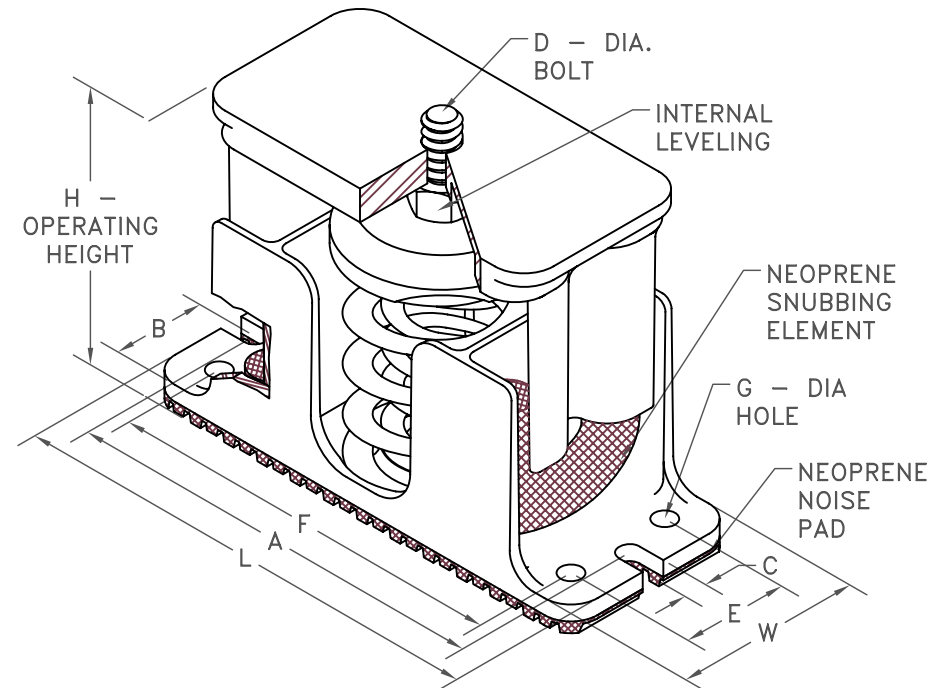
SLP 1" DEFLECTION ISOLATOR

IP UNITS (INCHES AND POUNDS)

TYPE	A	B	C	D	E	F	G	H	L	W
35A/805A	5.63	1.06	0.31	0.38	-	-	-	4.05	6.13	2.13
50C/3500C	8.00	1.75	0.44	0.63	2.00	7.50	0.44	5.55	9.00	3.50

NOTE: ALL MOUNTING DIMENSIONS SYMMETRIC ABOUT ISOLATOR CENTER

STANDARD RATINGS		SPRING COIL					
TYPE	SIZE	COLOR		FREE		RATED	
		OUTER	INNER	HT.	O.D.	LOAD	DEFL.
SLP	35A	BLUE		3.19	1.75	35	1.52
SLP	70A	GREEN		3.19	1.75	70	1.36
SLP	120A	GRAY		3.19	1.75	120	1.18
SLP	220A	BROWN		3.19	1.75	220	1.07
SLP	370A	ORANGE		3.19	1.75	370	0.96
SLP	500A	BEIGE		3.19	1.75	500	1.00
SLP	600A	CHROME		3.19	1.75	600	1.00
SLP	700A	BEIGE	WHITE	3.19	1.75	700	1.00
SLP	805A	CHROME	WHITE	3.19	1.75	805	1.01
SLP	50C	BEIGE		4.20	3.00	50	1.00
SLP	100C	CHROME		4.20	3.00	100	1.00
SLP	250C	BLUE		4.20	3.00	250	1.79
SLP	450C	GREEN		4.20	3.00	450	1.54
SLP	625C	BLACK		4.20	3.00	625	1.44
SLP	800C	GRAY		4.20	3.00	800	1.31
SLP	1000C	RED		4.20	3.00	1000	1.15
SLP	1250C	BROWN		4.20	3.00	1250	1.09
SLP	1700C	ORANGE		4.20	3.00	1700	0.95
SLP	2200C	ORANGE	GRAY	4.20	3.00	2200	1.00
SLP	2465C	BLUE		4.20	3.00	2465	1.00
SLP	2865C	BLUE	GRAY	4.20	3.00	2865	1.00
SLP	3500C	BLUE	BROWN	4.20	3.00	3500	1.00



SPECIFICATIONS:

- HOUSED COIL SPRING ISOLATOR WITH INTERNAL SNUBBERS.
- POWDER COATED STEEL SPRING ELEMENTS.
OTHER METALLIC HARDWARE IS BRIGHT ZINC PLATED.
- 35A/805A HOUSINGS ARE CAST ALUMINUM, 50C/3500C ARE CAST IRON.
- MINIMUM OVERLOAD OF 50%.
- MINIMUM Kx/Ky RATIO OF 1.0.
- ALL ELEMENTS SAFE AT SOLID LOADING.
- ALL THREADED MEMBERS ARE AMERICAN STANDARD.



KINETICS NOISE CONTROL, INC
6300 IRELAN PL,
DUBLIN, OH 43017 USA
Ph: 614 889-0480, Fax: 614 889-0540
www.kineticsnoise.com

Model:
**SLP-
35A/3500C**

By: **BB**
Date: **02/11/08**
Revised: **/**

Drawing No:
S-01.24-12