

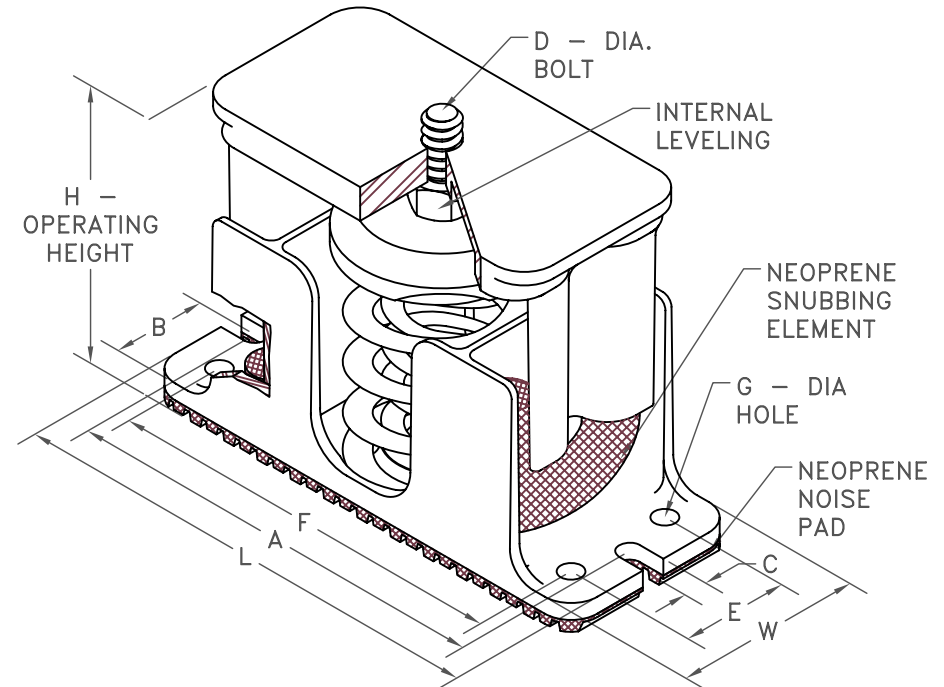
## SLP 25 mm DEFLECTION ISOLATOR

S-I UNITS (mm AND kg)

TYPE	A	B	C	D	E	F	G	H	L	W
35A/805A	143	27	8	10	-	-	-	103	156	54
50C/3500C	203	44	11	16	51	191	11	141	229	89

NOTE: ALL MOUNTING DIMENSIONS SYMMETRIC ABOUT ISOLATOR CENTER

STANDARD RATINGS		SPRING COIL					
		COLOR		FREE	RATED		
TYPE	SIZE	OUTER	INNER	HT.	O.D.	LOAD	DEFL.
SLP	35A	BLUE		81	44	16	39
SLP	70A	GREEN		81	44	32	35
SLP	120A	GRAY		81	44	54	30
SLP	220A	BROWN		81	44	100	27
SLP	370A	ORANGE		81	44	168	24
SLP	500A	BEIGE		81	44	227	25
SLP	600A	CHROME		81	44	272	25
SLP	700A	BEIGE	WHITE	81	44	318	25
SLP	805A	CHROME	WHITE	81	44	365	26
SLP	50C	BEIGE		107	76	23	25
SLP	100C	CHROME		107	76	45	25
SLP	250C	BLUE		107	76	113	45
SLP	450C	GREEN		107	76	204	39
SLP	625C	BLACK		107	76	283	37
SLP	800C	GRAY		107	76	363	33
SLP	1000C	RED		107	76	454	29
SLP	1250C	BROWN		107	76	567	28
SLP	1700C	ORANGE		107	76	771	24
SLP	2200C	ORANGE	GRAY	107	76	998	26
SLP	2465C	BLUE		107	76	1118	25
SLP	2865C	BLUE	GRAY	107	76	1300	25
SLP	3500C	BLUE	BROWN	107	76	1588	25



### SPECIFICATIONS:

- HOUSED COIL SPRING ISOLATOR WITH INTERNAL SNUBBERS.
- POWDER COATED STEEL SPRING ELEMENTS.  
OTHER METALLIC HARDWARE IS BRIGHT ZINC PLATED.
- 35A/805A HOUSINGS ARE CAST ALUMINUM, 50C/3500C ARE CAST IRON.
- MINIMUM OVERLOAD OF 50%.
- MINIMUM  $K_x/K_y$  RATIO OF 1.0.
- ALL ELEMENTS SAFE AT SOLID LOADING.
- ALL THREADED MEMBERS ARE AMERICAN STANDARD.



KINETICS NOISE CONTROL, INC  
6300 IRELAN PL,  
DUBLIN, OH 43017 USA  
Ph: 614 889-0480, Fax: 614 889-0540  
www.kineticsnoise.com

Model:  
**SLP-  
35A/3500C**

By: **BB**  
Date: **02/11/08**  
Revised: **/**

Drawing No:  
**S-01.24-12  
METRIC**