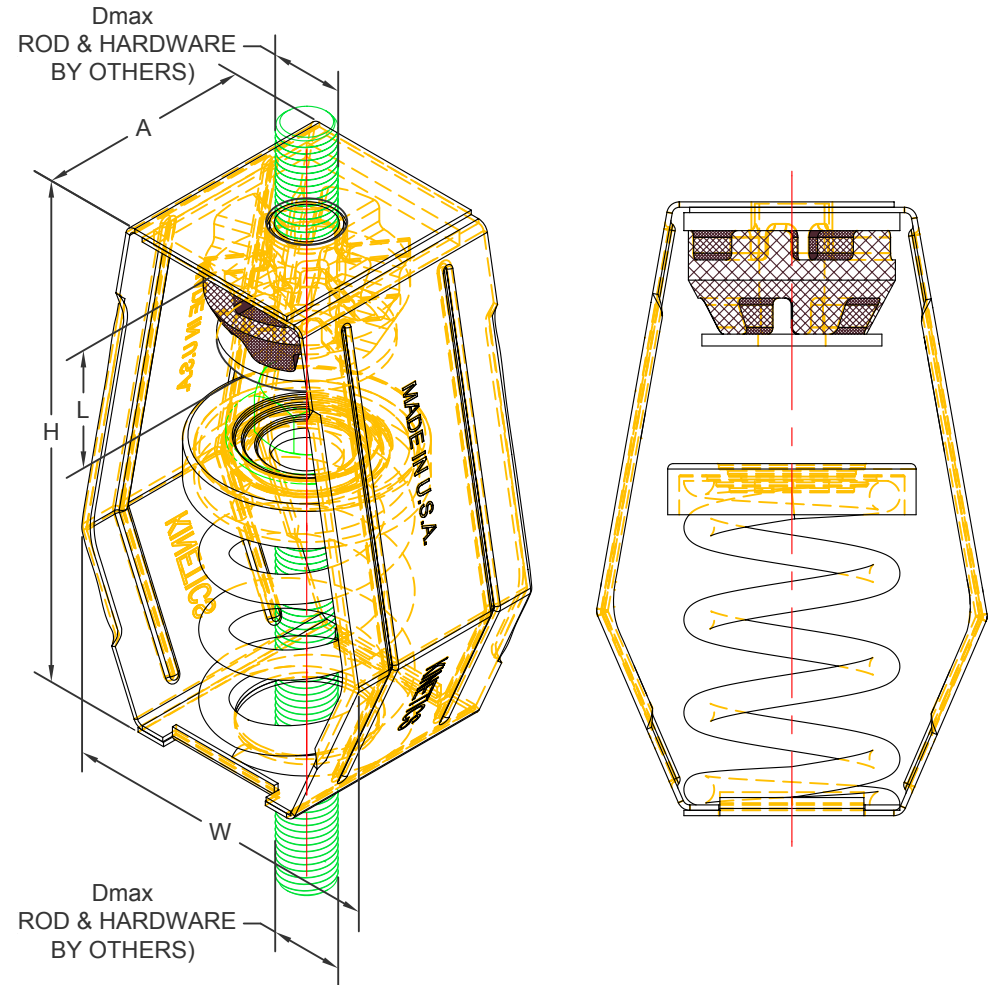


SRH 2" DEFLECTION ISOLATION HANGERS

IP UNITS (INCHES AND POUNDS)

TYPE	L	H	W	A	D _{max}
2-260/1200	2.00	8.59	5.58	3.63	0.88

STANDARD RATINGS				SPRING COIL			INSERT COLOR
TYPE	SIZE	LOAD	DEFL.	COLOR	FREE HT.	O.D.	
SRH	2-260	260	2.21	BLUE	4.20	3.00	GREEN
SRH	2-465	465	2.01	GREEN	4.20	3.00	WHITE
SRH	2-720	720	2.07	BLACK	4.20	3.00	PURPLE
SRH	2-850	850	1.97	WHITE	4.25	3.00	YELLOW
SRH	2-1025	1025	1.99	BEIGE	4.25	3.00	YELLOW
SRH	2-1200	1200	2.00	CHROME	4.50	3.00	YELLOW



SPECIFICATIONS:

- SPRING ELEMENTS AND BRACKETS ARE POWDER COATED.
- LOAD PLATES ARE BRIGHT ZINC PLATED.
- ISOLATION HANGERS HAVE A MINIMUM K_x/K_y RATIO OF 1.1.
- SPRING ELEMENTS ARE SAFE AT SOLID LOADING.
- HANGER BRACKETS WILL CARRY (5) TIMES OVERLOAD WITHOUT FAILURE.
- HANGER BRACKETS WILL ALLOW 30° ROD MISALIGNMENT WITHOUT SHORT CIRCUITING.
- "NO SHORT" STEP CAP.



KINETICS NOISE CONTROL, INC
6300 IRELAN PL,
DUBLIN, OH 43017 USA
Ph: 614 889-0480, Fax: 614 889-0540
www.kineticsnoise.com

Model:
SRH
2-260/1200

By: BB
Date: 11/03/04
Revised: 07/22/15/BB

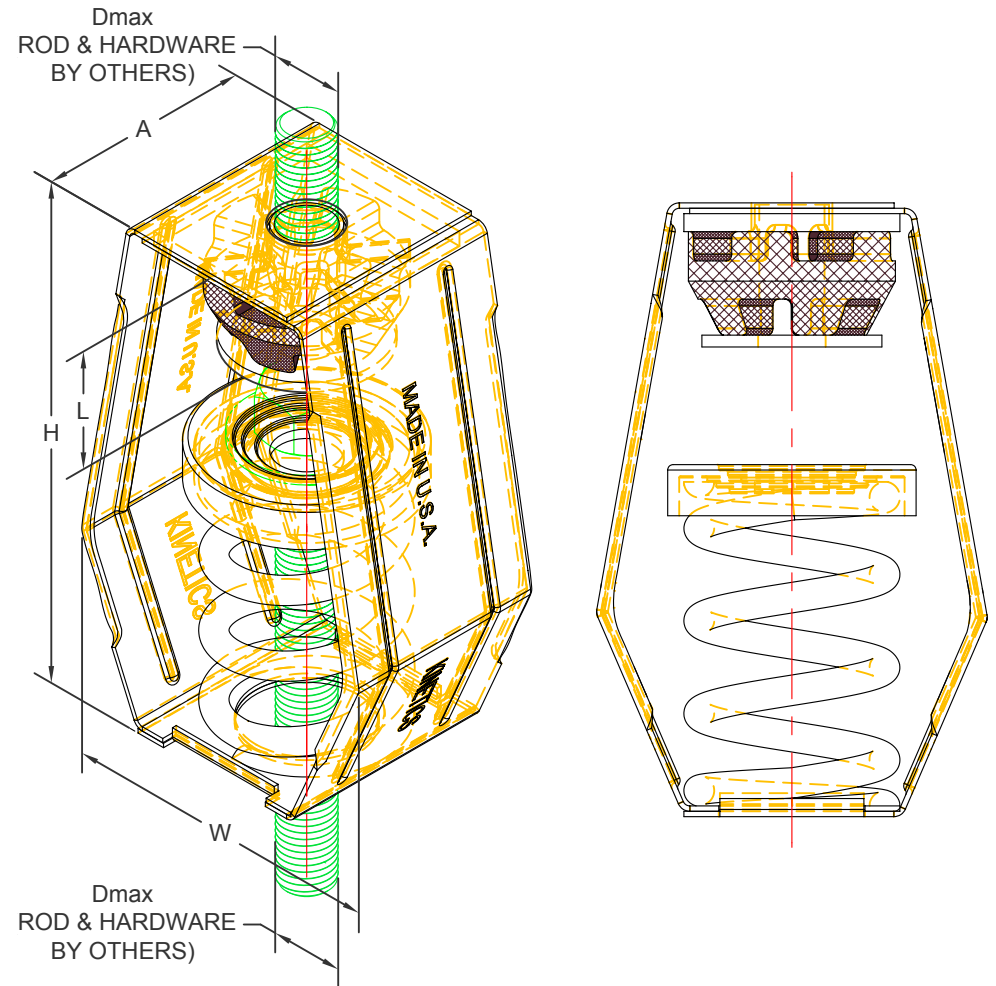
Drawing No:
S-03.37-22

SRH 51 mm DEFLECTION ISOLATION HANGERS

S-I UNITS (mm AND kg)

TYPE	L	H	W	A	D _{max}
2-260/1200	51	218	142	92	22

STANDARD RATINGS				SPRING COIL			INSERT COLOR
TYPE	SIZE	LOAD	DEFL.	COLOR	FREE HT.	O.D.	
SRH	2-260	118	56	BLUE	107	76	GREEN
SRH	2-465	211	51	GREEN	107	76	WHITE
SRH	2-720	327	53	BLACK	107	76	PURPLE
SRH	2-850	386	50	WHITE	108	76	YELLOW
SRH	2-1025	465	51	BEIGE	108	76	YELLOW
SRH	2-1200	544	51	CHROME	114	76	YELLOW



SPECIFICATIONS:

- SPRING ELEMENTS AND BRACKETS ARE POWDER COATED.
- LOAD PLATES ARE BRIGHT ZINC PLATED.
- ISOLATION HANGERS HAVE A MINIMUM K_x/K_y RATIO OF 1.1.
- SPRING ELEMENTS ARE SAFE AT SOLID LOADING.
- HANGER BRACKETS WILL CARRY (5) TIMES OVERLOAD WITHOUT FAILURE.
- HANGER BRACKETS WILL ALLOW 30° ROD MISALIGNMENT WITHOUT SHORT CIRCUITING.
- "NO SHORT" STEP CAP.



KINETICS NOISE CONTROL, INC
 6300 IRELAN PL,
 DUBLIN, OH 43017 USA
 Ph: 614 889-0480, Fax: 614 889-0540
 www.kineticsnoise.com

Model:
SRH
2-260/1200

By: **BB**
 Date: **11/03/04**
 Revised: **07/22/15/BB**

Drawing No:
S-03.37-22
METRIC