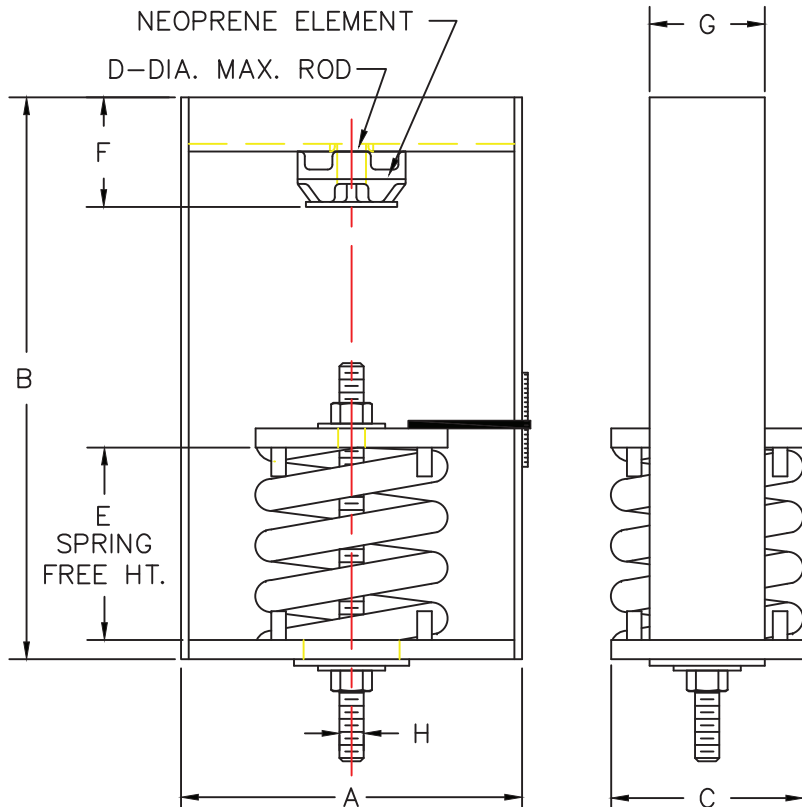


MODEL	RATED LOAD LB/KG	SPRING COLOR	RATED DEFLECTION IN/MM	DIMENSIONS IN INCHES/MILLIMETERS							
				A IN/MM	B IN/MM	C IN/MM	D IN/MM	E IN/MM	F IN/MM	G IN/MM	H IN/MM
SRPH-4-100	100/46	GRAY	4.10/104	9.38/238	16.00/406	6.00/152	.88/22	10.00/254	3.13/80	4.00/102	.63/16
SRPH-4-250	250/114	BLUE	4.20/107	9.38/238	16.00/406	6.00/152	.88/22	10.00/254	3.13/80	4.00/102	.63/16
SRPH-4-500	500/227	GREEN	4.15/105	9.38/238	16.00/406	6.00/152	.88/22	10.00/254	3.13/80	4.00/102	.63/16
SRPH-4-750	750/341	BLACK	4.25/108	9.38/238	16.00/406	6.00/152	.88/22	10.00/254	3.13/80	4.00/102	.63/16
SRPH-4-1000	1000/455	RED	4.28/109	9.38/238	16.00/406	6.00/152	.88/22	10.00/254	3.13/80	4.00/102	.63/16
SRPH-4-1250	1250/568	BROWN	4.30/109	9.38/238	16.00/406	6.00/152	.88/22	10.00/254	3.13/80	4.00/102	.63/16
SRPH-4-1600	1600/727	ORANGE	4.15/105	9.38/238	16.00/406	6.00/152	.88/22	10.00/254	3.13/80	4.00/102	.63/16



- SRPH-4 ISOLATION HANGERS HAVE A MINIMUM K_x/K_y OF 1.2
- SRPH-4 ISOLATION HANGERS HAVE A TYPICAL OVERLOAD CAPACITY OF 50%
- SRPH-4 SPRING ELEMENTS ARE SAFE FOR SOLID LOADING
- SRPH-4 HANGER BRACKETS WILL CARRY (5) TIMES OVERLOAD WITHOUT FAILURE
- SRPH-4 HANGER BRACKETS WILL ALLOW 30° ROD MISALIGNMENT WITHOUT SHORT CIRCUITING
- SRPH-4 SPRING ELEMENTS AND BRACKETS ARE PAINTED
- SRPH-4 RATED DEFLECTION IS SPRING DEFLECTION PLUS PRORATED NEOPRENE DEFLECTION
- SRPH-4 NEOPRENE ELEMENTS ARE DESIGNED FOR .38° DEFLECTION AT MAXIMUM LOAD

NOTE:
ALL THREADED MEMBERS ARE AMERICAN STANDARD.



TITLE
MODEL SRPH-4 HANGER

LAST DATE
REVISED
5/21/97

DRAWN BY
RS

DRAWING NO.
S-03.47-4D