

# FLS 25 mm DEFLECTION ISOLATOR

S-I UNITS (mm AND kg)

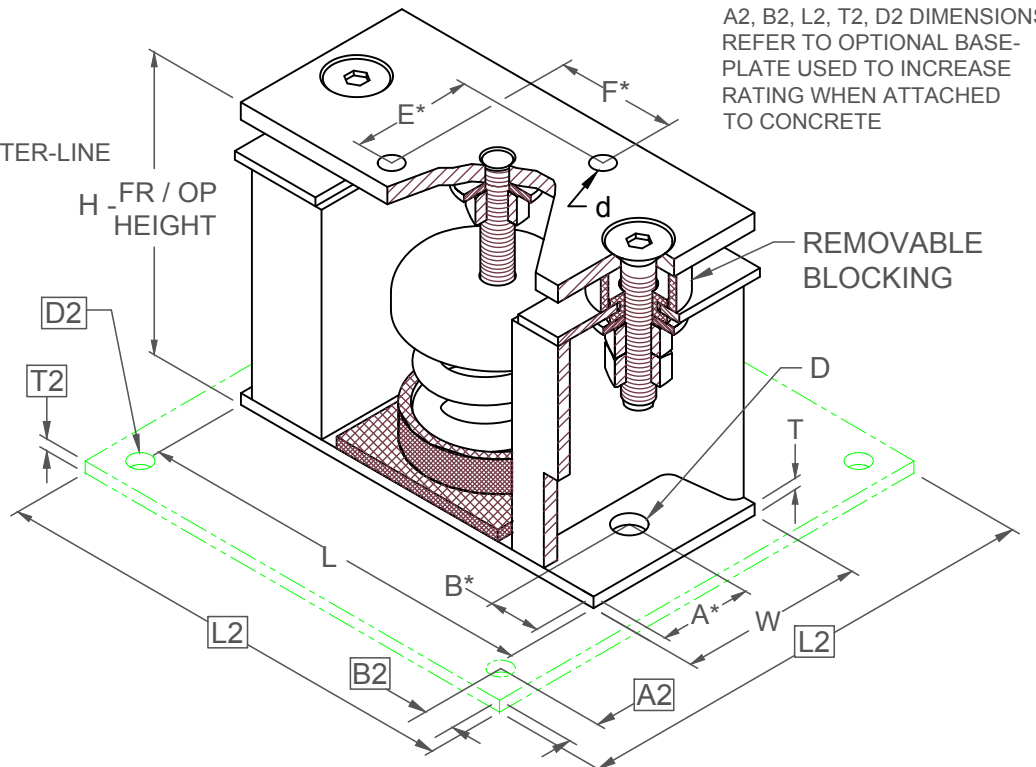
TYPE	L	W	T	A	B	D	E	F	d	H
1-35/805	165	76	5	38	13	14	44	48	11	113

\*ALL MOUNTING BOLT PATTERNS SYMMETRICAL ABOUT ISOLATOR CENTER-LINE

STANDARD RATINGS	SPRING COIL						
	COLOR		FREE HT.	O.D.	RATED		DEFL.
	TYPE	SIZE			OUTER	INNER	
FLS	1-35	BLUE		81	44	16	39
FLS	1-70	GREEN		81	44	32	35
FLS	1-120	GRAY		81	44	54	30
FLS	1-220	BROWN		81	44	100	27
FLS	1-370	ORANGE		81	44	168	24
FLS	1-500	BEIGE		81	44	227	25
FLS	1-600	CHROME		81	44	272	25
FLS	1-700	BEIGE	WHITE	81	44	318	25
FLS	1-805	CHROME	WHITE	81	44	365	26

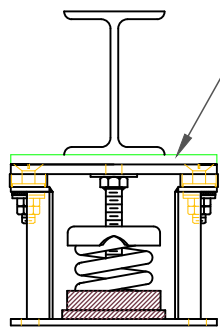
1-35/805 REQUIRES 013 DIA. x 102 MIN. EMBED ANCHORS IN CONCRETE (ALLOWABLE LOADS BASED ON 21 MPa MIN CONCRETE)

1-35/805 ANCHOR BOLT TORQUE - 75 N-M, PULL TEST - 794 kg

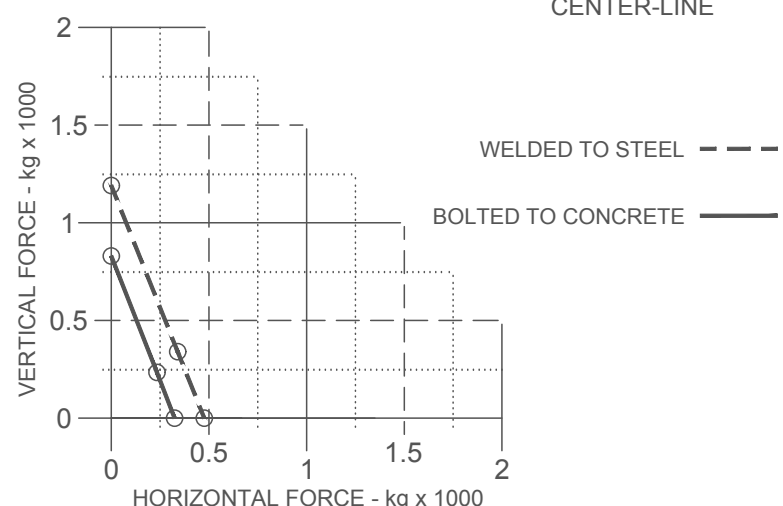


A2, B2, L2, T2, D2 DIMENSIONS REFER TO OPTIONAL BASE-PLATE USED TO INCREASE RATING WHEN ATTACHED TO CONCRETE

\*ALL MOUNTING BOLT PATTERNS SYMMETRICAL ABOUT ISOLATOR CENTER-LINE



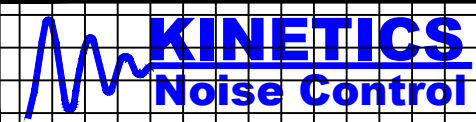
IF EQUIP SUPPORT STEEL IS 90° TO THE LONG ISOLATOR AXIS, AN ADD'L PLATE EQUAL IN THICKNESS TO THE TOP PLATE IS REQUIRED



Computed horiz and vert seismic load combinations must fall within the restraint capacity envelope. Contact KNC for bolted to steel data.

## SPECIFICATIONS:

- VERTICALLY AND LATERALLY RESTRAINED SPRING ISOLATOR WITH CONSTANT FREE AND OPERATING HEIGHT AND REPLACEABLE NEOPRENE SNUBBING ELEMENTS.
- MINIMUM COIL OVERLOAD OF 50%.
- MINIMUM  $K_x/K_y$  RATIO OF 1.0.
- ALL ELEMENTS SAFE AT SOLID LOADING.
- POWDER COATED COILS AND HOT DIPPED GALVANIZED BRACKET.
- HOUSINGS MAY BE USED FOR BLOCKING DURING EQUIPMENT ERECTION.



KINETICS NOISE CONTROL, INC  
 6300 IRELAN PL,  
 DUBLIN, OH 43017 USA  
 Ph: 614 889-0480, Fax: 614 889-0540  
 www.kineticsnoise.com

Model:  
**FLS-1-35 / 805**

By: **BB**  
 Date: **03/21/05**  
 Revised: **5/5/06 / PWM**

Drawing No:  
**S-01.22-10**  
 METRIC