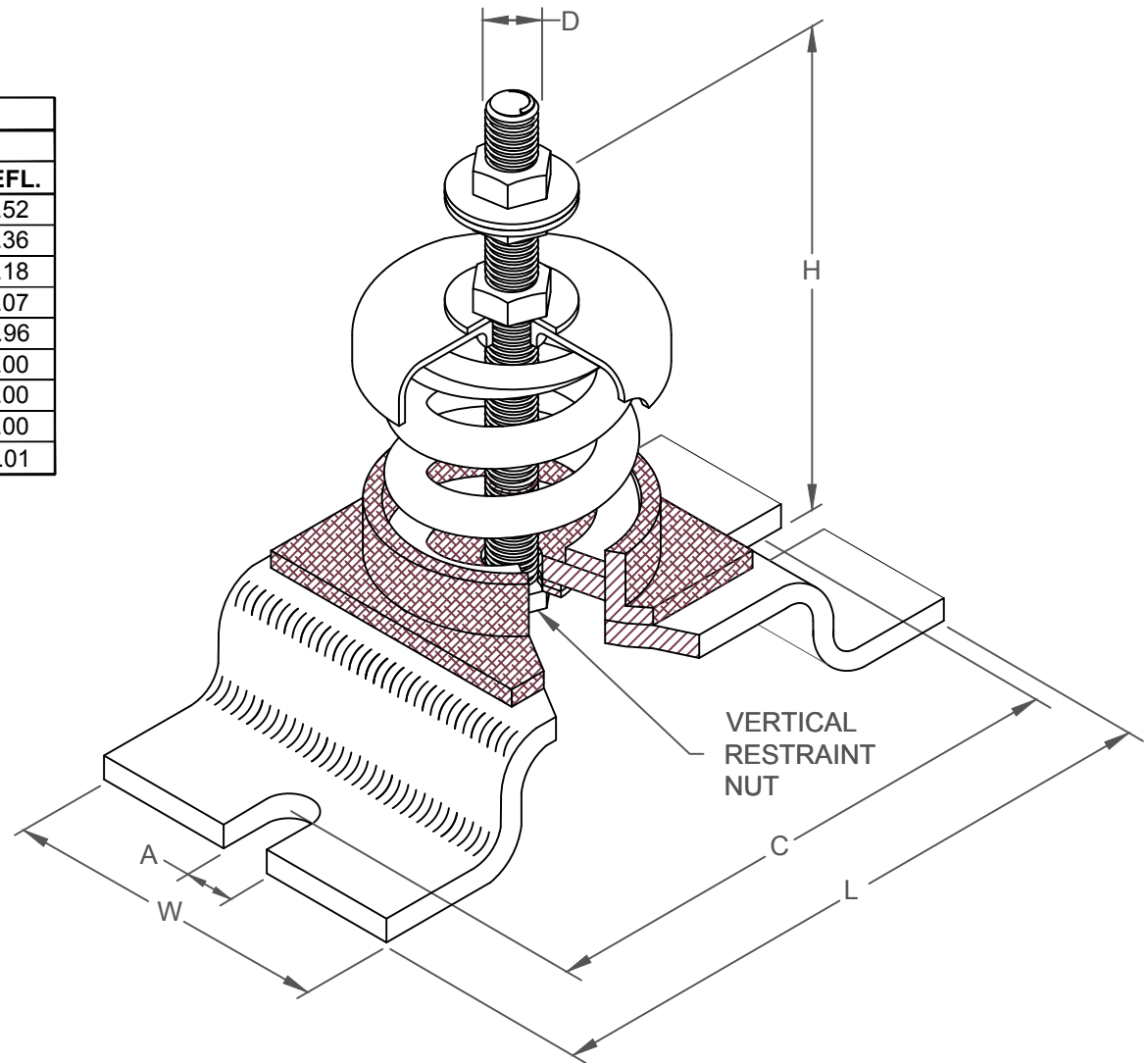


**FRS 1" DEFLECTION ISOLATOR**  
IP UNITS (INCHES AND POUNDS)

TYPE	L	W	C	A	H	D
1-35/805	4.75	3.00	3.75	0.44	6.00	0.50

STANDARD RATINGS		SPRING COIL					
TYPE	SIZE	COLOR		FREE HT.	O.D.	RATED	
		OUTER	INNER			LOAD	DEFL.
FRS	1-35	BLUE		3.19	1.75	35	1.52
FRS	1-70	GREEN		3.19	1.75	70	1.36
FRS	1-120	GRAY		3.19	1.75	120	1.18
FRS	1-220	BROWN		3.19	1.75	220	1.07
FRS	1-370	ORANGE		3.19	1.75	370	0.96
FRS	1-500	BEIGE		3.19	1.75	500	1.00
FRS	1-600	CHROME		3.19	1.75	600	1.00
* FRS	1-700	BEIGE	WHITE	3.19	1.75	700	1.00
* FRS	1-805	CHROME	WHITE	3.19	1.75	805	1.01



**SPECIFICATIONS:**

- ISOLATORS ARE DESIGNED FOR VERTICAL MOTION RESTRAINT
- ISOLATORS CAN BE BOLTED TOP AND BOTTOM
- ISOLATORS HAVE A MINIMUM  $K_x/K_y$  RATIO OF 1.0
- ISOLATORS HAVE A TYPICAL OVERLOAD CAPACITY OF 50%  
ITEMS MARKED (\*) HAVE A TYPICAL OVERLOAD CAPACITY OF 30%
- SPRING ELEMENTS ARE SAFE AT SOLID LOADING
- SPRING ELEMENTS ARE POWDER COATED
- ALL HARDWARE TO BE ZINC PLATED
- NEOPRENE NOISE CAP CONTAINS AN EMBEDDED STEEL CUP