

MODEL	SPRING					
	COLOR		FREE		RATED	
	OUTER	INNER	HT.	O.D.	LOAD	DEFL.
TITAN (B) 4-200	GRAY		10.00	5.63	200	4.00
TITAN (B) 4-500	BLUE		10.00	5.63	500	4.00
TITAN (B) 4-750	BLUE	BEIGE	10.00	5.63	750	4.00
TITAN (B) 4-1000	GREEN		10.00	5.63	1000	4.00
TITAN (B) 4-1250	GREEN	BEIGE	10.00	5.63	1250	4.00
TITAN (B) 4-1500	BLACK		10.00	5.63	1500	4.00
TITAN (B) 4-1750	BLACK	BEIGE	10.00	5.63	1750	4.00
TITAN (B) 4-2000	RED		10.00	5.63	2000	4.00
TITAN (B) 4-2250	RED	BEIGE	10.00	5.63	2250	4.00
TITAN (B) 4-2500	BROWN		10.00	5.63	2500	4.00
TITAN (B) 4-2750	BROWN	BEIGE	10.00	5.63	2750	4.00
TITAN (B) 4-3200	ORANGE		10.00	5.63	3200	4.00
TITAN (B) 4-3450	ORANGE	BEIGE	10.00	5.63	3450	4.00

Drawing No:

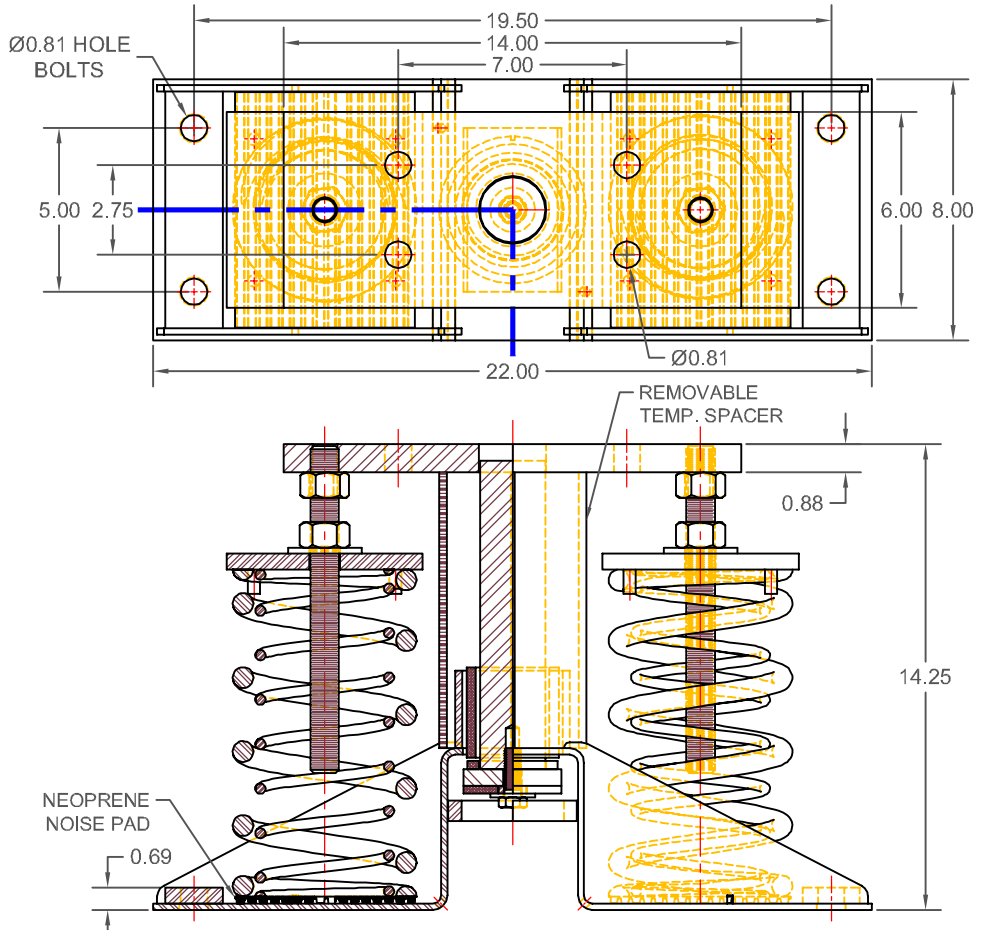
By: PWM

Date: 04/17/13

Revised: 2/22/17 / JW

Model: TITAN (B) 4-200/3450

KINETICS NOISE CONTROL, INC
 6300 IRELAN PL,
 DUBLIN, OH 43017 USA
 Ph: 614 889-0480, Fax: 614 889-0540
 www.kineticsnoise.com



SPECIFICATIONS

- * VERTICALLY AND Laterally RESTRAINED SPRING ISOLATOR.
- * CONSTANT FREE AND OPERATING HEIGHT.
- * FIELD REPLACEABLE RUBBER ELEMENTS.
- * MIN OVERLOAD OF 50%.
- * MIN Kx/KY RATIO OF 1.0.
- * ALL ELEMENTS SAFE AT SOLID LOADING.
- * POWDER COATED SPRING COILS.
- * HOUSINGS ARE HOT DIP GALVANIZED.
- * HARDWARE IS ZINC PLATED.
- * TOTAL COMBINED LATERAL AND VERTICAL MOVEMENT IS LIMITED TO 1/2" (1/4" IN ANY DIRECTION).

NOTE:

CURRENT CODE REQUIREMENTS CALL FOR ANCHORS TO BE EVALUATED ON A CASE SPECIFIC BASIS. BUILDING CODE, ANCHOR TYPE AND INSTALLATION CONDITIONS ALL IMPACT THE CAPACITY. FOR APPLICATIONS CERTIFIED BY KNC, THIS EVALUATION WILL BE PERFORMED BY KNC. FOR APPLICATIONS CERTIFIED BY OTHERS, IT IS RECOMMENDED THAT THE DESIGNER USE THE APPROPRIATE ANCHOR MANUFACTURER'S ANALYSIS SOFTWARE.

WITH THE USE OF CONCRETE ANCHORS AND AN APPROPRIATE OVERSIZED BASEPLATE, THE MAXIMUM RESTRAINT RATING OF THIS ISOLATOR CAN BE INCREASED AS HIGH AS THE LEVEL FOR WELDED/BOLTED CONNECTIONS INDICATED ON THIS CURVE.

WELDED/BOLTED
 MAX HOR-4500, MAX VER-6000,
 COMBINED-2875 (LB)

